

# TCS 3000

## Electronic Register



The Standard of Measurement

**Accu-Flo**  
1-800-921-2228  
[www.accuflo.com](http://www.accuflo.com)



[www.TCSmeters.com](http://www.TCSmeters.com)



## One Register to Connect It All

The TCS 3000 is a powerful, electronic register designed to transform the way you deliver fuel. It has been engineered to control most vehicle delivery operations. The TCS 3000 can improve your cash flow by allowing the driver to make more deliveries in less time with increased accuracy and security.



## Do More with the TCS 3000

The TCS 3000 electronic register was designed for a marketplace that is developing rapidly. With the ease of setup, you have the option of a simple "Pump & Print" delivery or a custom measurement solution.

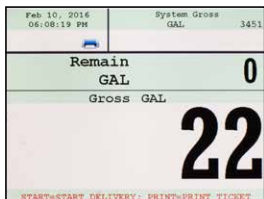
- » Simple Pump & Print
- » Single or Multiple Products
- » Auto-Calibration
- » Preset Price or Gallons
- » In-field Setup & Configuration
- » Temperature Volume Compensation
- » Additive Injection
- » Tank Gauging
- » Corrected Differential Pressure
- » Electronic Pump Control/PTO
- » Electronic Preset
- » Wireless Data Capture
- » Multiple Reports
- » Electronic Vapor or Air Elimination
- » And More!

## Specifications

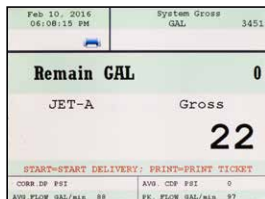
<b>MEMORY:</b>	4 GB of Non-Volatile Memory
<b>SERIAL PORTS:</b>	RS-232 and RS-485
<b>PRINTER INTERFACES:</b>	Open Interface for Slip, Roll, and Wireless Printing
<b>WIRELESS COMMUNICATION:</b>	WiFi, Radio, Cell and Bluetooth Add-Ons Available (Consult Factory for Pricing)
<b>GPS TRACKING:</b>	Available Upon Request
<b>MOUNTING OPTIONS:</b>	75 Degree, 90 Degree, & Remote (Must be Specified at Time of Order)
<b>SOFTWARE:</b>	Integrated Database, Interface Software Available
<b>TEMPERATURE RATING:</b>	-40 to 158° F (-40 to 70° C)
<b>INPUT VOLTAGE:</b>	12-30 Vdc
<b>UL/cUL RATING:</b>	Class 1, Division 2, Groups C & D

## Customizable Screen Views

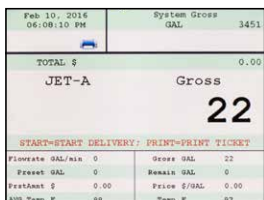
Quickly switch between 4 configurable delivery screens that display the information you need - even while fueling. Additional inventory, reporting, setup, and other helpful screens take the TCS 3000 functionality to the next level. Delivery screen with 1 configurable field is shown right.



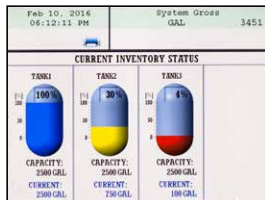
2 Configurable Fields



7 Configurable Fields



11 Configurable Fields



Inventory

## Easy-to-Read Display

The large, color VGA display is visible day or night. Additionally, it is heated to allow it to work even in extreme temperatures. Combined with easy operation, this register is a favorite among users.

## Backlit Keypad

The TCS 3000 is equipped with a backlit alpha-numeric keyboard that makes operation a breeze! Whether controlling simple metering functions or capturing detailed fueling information, this keyboard provides simplicity and ease of operation.

## Powerful Software

Equipped with state-of-the-art software, the TCS 3000 goes beyond standard meter register capabilities. This flow computer controls and interfaces with a wide variety of equipment. Now you can have more insight into your operational data than ever before!

## Mounting Flexibility

The TCS 3000 is available in 3 (fixed) orientations to fit seamlessly in any number of applications. 75 degree and 90 degree direct meter mountings or remotely mounted, the TCS 3000 can be constructed for the optimal viewing position.



75 Degrees

8.78" w x 10.91" h x 8.45" d



90 Degrees

8.78" w x 10.08" h x 7.87" d



Remote

8.78" w x 10.12" h x 4.43" d

## Easy Setup & Maintenance

Setup of the TCS 3000 is not only easy, it can be done without other auxiliary devices. This not only streamlines installation, it significantly lowers costs. After installation, the TCS 3000 is equally easy to maintain. On-screen status icons and messages are displayed for quick troubleshooting. Open software architecture allows the TCS 3000 to stay current with new features. Updates can be made via USB flash drive.



Shown: 1 configurable field

## OnBoard Computer & Back Office Integration

Thanks to an integrated database, the TCS 3000 is a stand-alone solution. However, when you're ready to take your automation to the next level, the TCS 3000 can be integrated with Cell, WiFi, or Radio communication to close the gap between your meter and your back office software. This includes connecting to many on-board computing devices or using the TCS HUB software to collect and transmit data.



Check out our other solutions online at  
[www.TCSmeters.com](http://www.TCSmeters.com)!

## TCS Register Integration



### Flow Meters

The TCS 682 and 700 Series flow meters, and the majority of 3rd party meters can connect to the TCS 3000 remotely, and in some cases, directly. Consult factory for compatibility and any special considerations for 3rd party meters.



### TCS HUB Delivery Software

TCS HUB is a SQL-based software designed to capture truck delivery information wirelessly to be electronically collected at locations and/or the home office. The TCS HUB software supports both line of sight wireless modems and/or cellular modems for real-time delivery tracking.



### Pulse Transmission

The DMP pulse transmitters provide accurate signals for remote indication, totalizers and data monitoring systems by transferring the mechanical rotation of the flow meter into an electronic pulse.



### Electronic Air/Vapor Elimination

Electronic air eliminators are devices designed to extract free or accumulated volumes of air or vapor from a liquid dispensing system to achieve accurate measurement results.



### Electronic Control Valves

Electronic actuated piston and diaphragm control valves are designed to meet the variety of needs in the fluid process industry. Such valves include preset flow control valves, air differential control valves, pressure relief and safety valves.



### Printers

Receipt printers interface to the TCS 3000 to print delivery ticket information. Roll, slip, and wireless printers can be connected via serial port (native), WiFi (add-on), and Bluetooth (add-on), using the TCS open printing interface. Popular printers include Epson (TM-U295 & TM-U220), Citizen (CMP30), Printek, Blaster, and others.



### Temperature Correction

The RTD probe compensates for the effect of product temperature change on the metered liquid volume. It takes and transmits multiple temperature readings to the register per second. The probe is accurate to 0.45° F (0.25° C) over the entire TCS 3000 operating temperature range.

### Authorized Distributor

**Accu-Flo**  
1-800-921-2228  
[www.accuflo.com](http://www.accuflo.com)



2515 Charleston Place  
Fort Wayne, Indiana 46808  
United States of America

[www.TCSmeters.com](http://www.TCSmeters.com)  
[sales@tcsmeters.com](mailto:sales@tcsmeters.com)  
(800) 348-4753  
(260) 484-0382



Made in U.S.A.

© 2020 Total Control Systems  
TCS 900042.002