

KleeBlue™

DEF Storage & Dispensing Systems

Effective: June 1, 2020



DEF Distributor Equipment Product Catalog

Bulk Tanks

Filling Systems

Delivery Systems

Transloading

DEF Manufacturing

Accessories & Fittings



1601 Buchanan Road
Evansville, IN 47720
(800) 320-2122 | (260) 484-9230 fax
www.KleerBlueSolutions.com



QUALITY PRODUCTS

KleerBlue delivers quality. We believe in creating safe, durable products that offer the most value long-term. From the moment a product is conceptualized to engineering to manufacturing to shipping, our attention to detail is second to none. All our products meet ISO 22241 and PEI RP1100 standards. We manufacture here in the USA. KleerBlue offers the industry's widest offering of DEF dispensing and storage systems. Thanks to our quality products, KleerBlue is here to stay.



PROVEN EXPERTISE

KleerBlue has the most in-house expertise in the industry. That expertise was recognized early on when we were asked to be part of the original committee to help establish PEI (Petroleum Equipment Industry) recommended practices and standards for the storage and dispensing of DEF. Through our parent companies, we have a 60 year history handling urea, a main component of DEF. We have a full in-house engineering and PLC programming team and years of PEI experience in engineering, manufacturing, construction, installation, distribution and service. KleerBlue not only understands the liquid and product, we know the business as well.



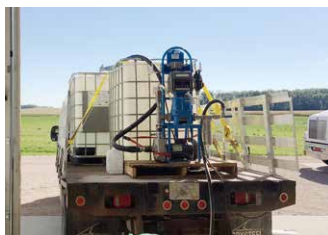
CUSTOMER-FIRST APPROACH

KleerBlue believes in making the customer central in all we do. We stand behind our products. KleerBlue offers fair margins. We don't want to give our customers the cheapest products; we want to deliver quality and long-term value. Do we not have what you need? Thanks to our in-house engineering team, we can do custom products to help meet your needs.

| Fort Wayne, Indiana

| Evansville, Indiana





DEF TANKS

4

Indoor/Outdoor Industrial-Grade Bulk Tanks	6	Indoor Commercial-Grade Bulk Tanks	7
--	---	------------------------------------	---

STATIONARY FILLING SYSTEMS

8

Basic Metered Drum & Tote Filling	10	50/150 GPM Drum, Tote & Transport Filling	13
50 GPM Drum & Tote with Transport Filling	11	Basic Scale-Based Drum & Tote Filling	14
100 GPM Drum & Tote with Transport Filling	12		

PORTABLE DELIVERY SYSTEMS

15

High Flow Delivery Skids	17	Bottom Withdrawal 2-Wheel Carts	22
Medium Flow Delivery Skids	19	Elliptical Leg Poly Tank	23
Top Withdrawal 2-Wheel Carts	21	Saddlebox for Mobile Refueling	24

RAIL CAR TRANSLOADING SYSTEMS

25

Stationary Transload Systems	27	Mobile Transload Systems	30
------------------------------	----	--------------------------	----

DEF MANUFACTURING FACILITIES

32

Liquid Concentrate Facilities	33	Dry Facilities	33
-------------------------------	----	----------------	----

ACCESSORIES

35

Loadout Arms	36	Bulk Tank Add-Ons	38
Cloud-Enabled Unattended Loadout	37	Filters	39

FITTINGS



40

Valves	41	Pipe Fittings	43
Drum & Tote Fittings	41		



**KLEERBLUE DEF
BULK TANKS**

Which Bulk Tank Is Right for Me?

	INDUSTRIAL-GRADE	COMMERCIAL-GRADE
		
	PG. 6	PG. 7
DEF CAPACITY		
3,000 gallons	✓	✓
5,000 gallons	-	✓
6,000 gallons	✓	✓
6,500 gallons	✓	✓
6,900 gallons	-	✓
7,800 gallons	-	✓
8,750 gallons	✓	-
8,900 gallons	-	✓
10,000 gallons	-	✓
10,500 gallons	✓	✓
12,000 gallons	-	✓
12,500 gallons	✓	✓
15,000 gallons	✓	✓
Other capacities (upon request)	✓	✓
CONSTRUCTION		
ASTM D-1998 Specifications	✓	-
Commercial Specifications	-	✓
HDLPE Polyethylene	✓	✓
Single Wall Flat Bottom	✓	✓
UV Stabilizer	Long-Term	Standard
Natural White Color	✓	✓
PLUMBING		
Bottom Fill & Withdrawal	✓	✓
10-Micron Tank Breather Vent	✓	✓
18" Non-Vented Manway	✓	✓
Extra Openings on Top of Tank for Additional Accessories	✓	✓

Industrial-Grade Single-Wall Bulk Tanks



Made in U.S.A.



INDOOR OR OUTDOOR USE Built to ASTM standards which provide the maximum strength and durability for long-term trouble-free use. The tanks offer the best tank construction available for excellent compatibility and impact resistance.

LARGE CAPACITIES A variety of tank dimensions are available for filling drums, totes, or transports.

BOTTOM FILL & WITHDRAWAL Supplied with stainless steel bottom tank outlets and lockable valves to improve the tank's structure integrity and provide the best long-term solution.

TANK SPECIFICATIONS

- HDLPE Polyethylene Single Wall Flat-Bottom
- Built to ASTM D-1998 Specifications
- Long-term UV-15 Stabilizer
- Natural Color White

CONSTRUCTION SPECIFICATIONS

- Tank Wrap for Shipping
- On-site Assembly Required. Instructions Included.

PLUMBING SPECIFICATIONS

- 3" FNTF Stainless Steel Tank Outlet with Siphon Tube
- Tank Outlet Package with 2" Stainless Steel Full Port Lockable Valve
- 3" Tank 10-Micron Breather Vent
- 18" Non-Vented Manway to Protect Product Integrity
- 2 Extra 2" Openings on Top of Tank

PART NUMBER	CAPACITY	DIMENSIONS	LIST PRICE	QTY	TOTAL PRICE
SBD 3000SWD	3,000 Gallons	102" d x 96" h	Call		
SBD 6000SWD	6,000 Gallons	102" d x 188" h	Call		
SBD 6500SWD	6,500 Gallons	120" d x 153" h	Call		
SBD 8750SWD	8,750 Gallons	142" d x 146" h	Call		
SBD 10500SWD	10,500 Gallons	142" d x 169" h	Call		
SBD 12500SWD	12,500 Gallons	142" d x 198" h	Call		
SBD 15000SWD	15,000 Gallons	142" d x 234" h	Call		

PART NUMBER	DESCRIPTION	LIST PRICE	QTY	TOTAL PRICE
SBD 911265	Bulk - 2 Tank Bottom Manifold	Call		
SBD T-3	Additional 3" Stainless Steel Bottom Tank Outlet	Call		
SBD TG-RT1-10	Digital Tank Gauge with Level Display for up to 10' tall tanks	Call		
SBD TG-RT11-20	Digital Tank Gauge with Level Display for 11'-20' tall tanks	Call		
SBD KB7100-HPA	High Product Level Audible Alarm	Call		
SBD 910415	TODO 2" Male Drybreak Tank Fill Adapter Kit	Call		
SBD 911178	2" Male Compatible Drybreak for TODO Style Kit	Call		
SBD 910416	OPW 2" Male Drybreak Tank Fill Adapter Kit	Call		
SBD 910381	Parker 2" Male Drybreak Tank Fill Adapter Kit	Call		
CAM F-SS-200	2" Stainless Steel Male NPT to Male Camlock	Call		
SNY 347-3000	Seismic Restraints 400-3000 Gallon Capacity Vertical Storage Tank (For SBD and KBS S Model Tanks)	Call		
SNY 347-6600	Seismic Restraints 3900-6600 Gallon Capacity Vertical Storage Tank (For SBD and KBS S Model Tanks)	Call		
SNY 347-13800	Seismic Restraints 7000-13800 Gallon Capacity Vertical Storage Tank (For SBD and KBS S Model Tanks)	Call		
SNY 347-20000	Seismic Restraints 15000-20000 Gallon Capacity Vertical Storage Tank (For SBD and KBS S Model Tanks)	Call		
TOTAL				

- Inside tank location, please consider building access doors and tip-to-vertical clearance requirements. See Pg. 46 for more details.
- Please contact sales for other sizes, double wall tanks, heat and insulation, and other questions.
- Tanks listed are the most common sizes. Other sizes are available from factories across the USA.
- Requires use of flexible connections allowing for tank & equipment movement.

Commercial-Grade Single-Wall Bulk Tanks

INDOOR USE The standard-grade single wall vertical tanks are rotationally molded with no seam and are constructed to store product with a specific gravity of 1.5 providing maximum strength and durability for long-term trouble-free use.

LARGE CAPACITIES A variety of tank dimensions are available for filling drums, totes, or transports.

BOTTOM FILL & WITHDRAWAL Supplied with stainless steel bottom tank outlets and lockable valves to improve the tank's structure integrity and provide the best long-term solution.



Made in U.S.A.



TANK SPECIFICATIONS

- HDLPE Polyethylene Single Wall Flat-Bottom
- Built to Commercial Specifications for DEF
- Long-term UV-15 Stabilizer
- Natural Color White

CONSTRUCTION SPECIFICATIONS

- Tank Wrap for Shipping (For Most Tanks)
- On-site Assembly Required. Instructions Included.

PLUMBING SPECIFICATIONS

- 3" FNTP Stainless Steel Tank Outlet with Siphon Tube
- Tank Outlet Package with 2" Stainless Steel Full Port Lockable Valve
- 3" Tank 10-Micron Breather Vent
- 18" Non-Vented Manway to Protect Product Integrity
- 2 Extra 2" Openings on Top of Tank

PART NUMBER	CAPACITY	DIMENSIONS	LIST PRICE	QTY
KBS S3000SWD	3,000 Gal	102" d x 96" h	Call	
KBS S3000SWD90	3,000 Gal	90" d x 127" h	Call	
KBS S6000SWD10	6,000 Gal	102" d x 188" h	Call	
KBS S6000SWD	6,000 Gal	120" d x 132" h	Call	
KBS S6900SWD	6,900 Gal	120" d x 153" h	Call	
KBS S8900SWD	8,900 Gal	120" d x 194" h	Call	
KBS S10500SWD	10,500 Gal	142" d x 169" h	Call	
KBS S12500SWD	12,500 Gal	142" d x 198" h	Call	
KBS S15000SWD	15,000 Gal	142" d x 234" h	Call	

PART NUMBER	CAPACITY	DIMENSIONS	LIST PRICE	QTY
KBS N3000SWD95	3,000 Gal	95" d x 109" h	Call	
KBS N5000SWD	5,000 Gal	102" d x 152" h	Call	
KBS N6500SWD	6,500 Gal	119" d x 150" h	Call	
KBS N7800SWD	7,800 Gal	119" d x 176" h	Call	
KBS N10000SWD	10,000 Gal	141" d x 160" h	Call	
KBS N12000SWD	12,000 Gal	141" d x 193" h	Call	
KBS N15000SWD	15,000 Gal	165" d x 186" h	Call	
TOTAL PRICE				




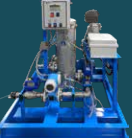

PART NUMBER	DESCRIPTION	LIST PRICE	QTY	TOTAL PRICE
SBD 911265	Bulk - 2 Tank Bottom Manifold	Call		
SBD T-3	Additional 3" Stainless Steel Bottom Tank Outlet	Call		
SBD TG-RT1-10	Digital Tank Gauge with Level Display for up to 10' tall tanks	Call		
SBD TG-RT11-20	Digital Tank Gauge with Level Display for 11'-20' tall tanks	Call		
SBD KB7100-HPA	High Product Level Audible Alarm	Call		
SBD 910415	TODO 2" Male Drybreak Tank Fill Adapter Kit	Call		
SBD 911178	2" Male Compatible Drybreak for TODO Style Kit	Call		
SBD 910416	OPW 2" Male Drybreak Tank Fill Adapter Kit	Call		
SBD 910381	Parker 2" Male Drybreak Tank Fill Adapter Kit	Call		
CAM F-SS-200	2" Stainless Steel Male NPT to Male Camlock	Call		
SNY 347-3000	Seismic Restraints 400-3000 Gallon Capacity Vertical Storage Tank (For SBD and KBS S Model Tanks)	Call		
SNY 347-6600	Seismic Restraints 3900-6600 Gallon Capacity Vertical Storage Tank (For SBD and KBS S Model Tanks)	Call		
SNY 347-13800	Seismic Restraints 7000-13800 Gallon Capacity Vertical Storage Tank (For SBD and KBS S Model Tanks)	Call		
SNY 347-20000	Seismic Restraints 15000-20000 Gallon Capacity Vertical Storage Tank (For SBD and KBS S Model Tanks)	Call		
		TOTAL		

- Inside tank location, please consider building access doors and tip-to-vertical clearance requirements. See Pg. 46 for more details.
- Please contact sales for other sizes, double wall tanks, heat and insulation, and other questions.
- Tanks listed are the most common sizes. Other sizes are available from factories across the USA.
- Requires use of flexible connections allowing for tank & equipment movement.



KLEERBLUE STATIONARY FILLING SYSTEMS

WHICH FILLING SYSTEM IS RIGHT FOR ME?

	BASIC METERED DRUM & TOTE FILLING 	50 GPM DRUM & TOTE WITH TRANSPORT FILLING 	100 GPM DRUM & TOTE WITH TRANSPORT FILLING 	50/150 GPM DRUM, TOTE & TRANSPORT FILLING 	BASIC SCALE- BASED DRUM & TOTE FILLING 
	PG. 10	PG. 11	PG. 12	PG. 13	PG. 14
SYSTEM FUNCTION					
Drum & Tote Filling	✓	✓	✓	✓	✓
Transport Filling	-	✓	✓	✓	-
METER SPECS					
NTEP & Weights & Measures-Approved Meter for Custody Transfer	Drum & Tote	Drum & Tote	Drum, Tote & Transport	Drum, Tote & Transport	Drum & Tote
Weights & Measures Flow Range	Up to 50 GPM	Up to 50 GPM	Up to 100 GPM	Up to 150 GPM	Up to 40 GPM
Bypass Meter for Transport Filling (Non-Weights & Measures)	-	150 GPM	150 GPM	Metered at 150 GPM	-
PUMP SPECS					
Self-Priming Centrifugal	-	Optional	Optional	Optional	Optional
Straight Centrifugal	-	✓	✓	✓	✓
1 Phase	-	Optional	Optional	Optional	✓
3 Phase	-	✓	✓	✓	-
CONSTRUCTION SPECS					
Hose Hangers	✓	✓	✓	✓	-
Pre-Assembled & Pre-Wired	✓	✓	✓	✓	✓
Forklift Compatible	✓	✓	✓	✓	✓

Basic Metered Drum & Tote Filling

WEIGHTS & MEASURES & NTEP APPROVED The TCS 682 SSD meter is approved for 2 to 50 GPM.

FLOW RATES Meter is approved for DEF at flow rates up to 50 GPM.

DRUM & TOTE & CUSTOMER TANK FILLING Fill drum & totes with DEF for resale with precision and accuracy.

PRE-ASSEMBLED & FORKLIFT COMPATIBLE Systems come fully assembled and can be easily installed.



Made in U.S.A.



Optional
Mechanical
Ticket Printer
& Hose Reel
Shown

METER SPECIFICATIONS

- Weights & Measures Approved Meter
- Handles Flow Rates of up to 50 GPM (Pump Not Included)
- TCS 682 Stainless Steel Piston Meter
- Optional Mechanical Preset
- Optional Air Eliminator
- Optional Ticket Printer
- Optional Remote Pump Start

CONSTRUCTION SPECIFICATIONS

- Forklift Compatible Frame

PLUMBING SPECIFICATIONS

- 1.5" Inlet
- All Plumbing is DEF Compatible

DISPENSING SPECIFICATIONS

- Hose Hanger Provided for 1" or 1 1/4" Hose
- Standard 1" x 25' Hose & 1 1/2" Angle Dispensing Valve
- Optional 1 1/4" x 25' Hose
- Optional Hose Reel for 1" or 1 1/4" Hose

PART NUMBER	DESCRIPTION	DIMENSIONS	LIST PRICE	QTY	TOTAL PRICE
SBD TOTEDISP1	Meter Stand with 1" x 20ft discharge hose and nozzle	37" x 30" x 54"	Call		
SBD TOTEDHR1	Meter Stand with Hose Reel, 25 ft of 1" hose	32" x 30" x 54"	Call		

PART NUMBER	DESCRIPTION	LIST PRICE	QTY	TOTAL PRICE
700 740-20SSD	Air Eliminator	Call		
SBD 682PREST-V	Mechanical Preset and Preset Valve	Call		
SBD VRTP682	Mechanical Ticket Printer	Call		
SBD MS-FILTER	High Flow Stainless Filter	Call		
TOTAL				

Please call for other solutions or custom applications.



SBD TOTEDISP1



SBD TOTEDHR1



SBD TOTEDHR1
with Filter Option

50 GPM Drum & Tote with Transport Filling

WEIGHTS & MEASURES & NTEP APPROVED The TCS 682 SSD meter is approved for 2 to 50 GPM.

HIGH FLOW TRANSPORT FILLING Bypass the meter and fill transports at rates of up to 150 GPM.

DRUM & TOTE & CUSTOMER TANK FILLING Fill drum & totes with DEF for resale with precision and accuracy.

PRE-ASSEMBLED & FORKLIFT COMPATIBLE Systems come fully assembled and can be easily installed.



Made in U.S.A.



METER SPECIFICATIONS

- Weights & Measures Approved Meter
- System Flow Rates of 2 to 50 GPM
- TCS 682 Stainless Steel Piston Meter
- Resettable Register

PUMP SPECIFICATIONS

- 2" x 1 1/2" Stainless Steel Straight Centrifugal Pump
- Capable of 150 GPM at 75 Ft of Head
- DEF Compatible Seal
- 5 HP 220v 1 or 3 Phase TEFC Motor
- Electrical Power Control Panel Switch

CONSTRUCTION SPECIFICATIONS

- Pre-assembled and Pre-Wired
- Forklift Compatible 4' x 4' Powder-Coated Frame

PLUMBING SPECIFICATIONS

- 20' of 2" Suction Hose
- 1 1/2" Transport Fill Line Bypassing the Meter
- Manual Valve to Control Discharge Flow Rate to Drum & Tote
- 2" Flanged Stainless Steel Filter with Seven 1-Micron Absolute Filter Cartridges
- DEF-Compatible Stainless Steel Valves, Camlocks & Plumbing

DISPENSING SPECIFICATIONS

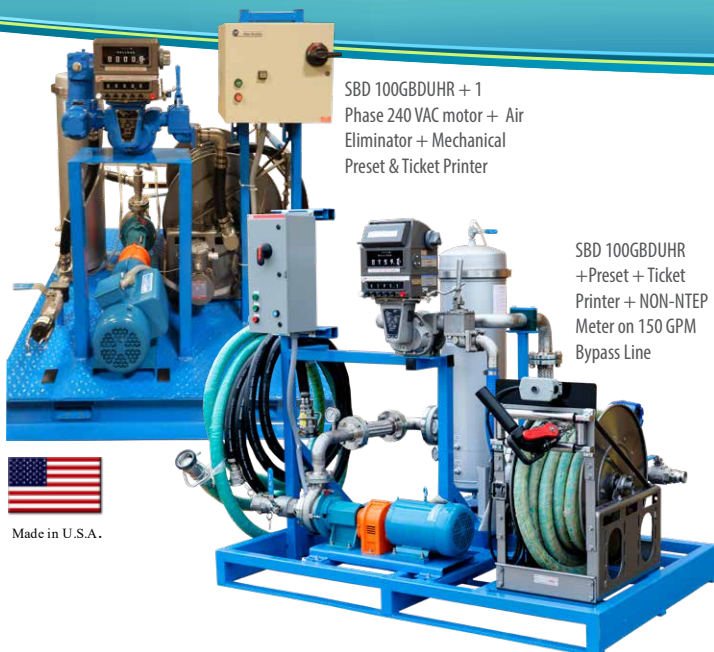
- 25' of 1 1/2" Discharge Hose for Transport Fill with Stainless Steel NPT Ends
- 25' of 1" Discharge Hose for Drum & Tote Fill
- 1 1/2" Poly Fill Nozzle & Micro Matic RSV Fill Valve
- Hose Hangers

PART NUMBER	DESCRIPTION	DIMENSIONS	LIST PRICE	QTY	TOTAL PRICE
SBD 50GBDU-1	1 Phase Transport & Drum & Tote Stationary Filling System - Requires Flooded Suction	4' wide x 4' long x 6' tall	Call		
SBD 50GBDU-3	3 Phase Transport & Drum & Tote Stationary Filling System - Requires Flooded Suction	4' wide x 4' long x 6' tall	Call		
SBD 50GBDU-3SP	3 Phase Transport & Drum & Tote Stationary Filling System - with Self-Priming Pump	4' wide x 4' long x 6' tall	Call		

PART NUMBER	DESCRIPTION	LIST PRICE	QTY	TOTAL PRICE
700 740-20SSD	Air Eliminator	Call		
SBD 682PREST-V	Mechanical Preset and Preset Valve	Call		
SBD VRTP682	Mechanical Ticket Printer	Call		
682 15SS2ATD	Less Weights & Measures Meter	Call		
SBD TODO2CPL	TODO Drybreak Stainless Steel 2" Coupler	Call		
PHC 2SSCOUPLER	Parker Drybreak Stainless Steel 2" Female Coupler	Call		
SBD OPW1772-2	OPW 1772 2" Stainless Steel Female Camlock Coupler	Call		
SBD DB200SS-C	2" Coupler Compatible Drybreak for TODO Style	Call		
CAM F-SS-200	2" Stainless Steel Male NPT to Male Camlock	Call		
CAM D-SS-200-E	2" Stainless Steel Female Camlock x Female NPT Thread	Call		
TOTAL				

Please call for other solutions or custom applications.

100 GPM Drum & Tote with Transport Filling



Made in U.S.A.

SBD 100GBDUHR + 1
Phase 240 VAC motor + Air
Eliminator + Mechanical
Preset + Ticket Printer

SBD 100GBDUHR
+Preset + Ticket
Printer + NON-NTEP
Meter on 150 GPM
Bypass Line

WEIGHTS & MEASURES & NTEP APPROVED The TCS 700 SSD meter is approved for 100 GPM.

HIGH FLOW TRANSPORT FILLING Bypass the meter and fill transports at rates of up to 150 GPM.

DRUM & TOTE & CUSTOMER TANK FILLING Fill drum & totes with DEF for resale with precision and accuracy.

PRE-ASSEMBLED & FORKLIFT COMPATIBLE Systems come fully assembled and can be easily installed.

METER SPECIFICATIONS

- TCS 700 Stainless Steel Rotary Meter NTEP Weights & Measures Approved for DEF
- Meter Certified for Flow Rates of up to 100 GPM
- Optional Mechanical Preset Push Button and Valve
- Optional Air Eliminator
- Optional Ticket Printer

PUMP SPECIFICATIONS

- 2" x 1 1/2" Stainless Steel Straight Centrifugal Pump
- Capable of 150 gpm bypass flow around meter at 75 Ft of Head
- DEF Compatible Seal
- 5 HP 220v 1 or 3 Phase TEFC Motor
- Start/Stop Buttons on Motor Starter

CONSTRUCTION SPECIFICATIONS

- Pre-assembled and Pre-Wired
- Forklift Compatible 4' x 4' Powder-Coated Frame

PLUMBING SPECIFICATIONS

- 20' of 2" Suction Hose
- 1 1/2" Transport Fill Line Bypassing the Meter
- Manual Valve to Control Discharge Flow Rate to Drum & Tote
- 2" Flanged Stainless Steel Filter with Seven 1-Micron Absolute Filter Cartridges
- DEF-Compatible Stainless Steel Valves, Camlocks & Plumbing

DISPENSING SPECIFICATIONS

- 25' of 1 1/2" Discharge Hose for Drum & Tote Filling & Bypass Transport Filling
- 1 1/2" Poly Fill Nozzle & Micro Matic RSV Fill Valve
- Hose Hanger
- Optional Hose Reel

PART NUMBER	DESCRIPTION	DIMENSIONS	LIST PRICE	QTY	TOTAL PRICE
SBD 100GBDU-3	3 phase Transfer for Transports, drums & totes, up to 100 gpm W/ 150 gpm bypass	48" x 48" x 67"	Call		
SBD 100GBDUHR	3 phase Transfer for Transports, drums & totes, up to 100 w/150 gpm bypass and hose reel.	74" x 48" x 67"	Call		

PART NUMBER	DESCRIPTION	LIST PRICE	QTY	TOTAL PRICE
700 740-20SSD	Air Eliminator	Call		
SBD 682PREST-V	Mechanical Preset and Preset Valve	Call		
SBD VRTP682	Mechanical Ticket Printer	Call		
682 15SS2ATD	Less Weights & Measures Meter	Call		
SBD 100GBDUSP	Upgrade to Self-Priming pump	Call		
SBD 240V-3P	240 VAC, three phase pump motor and motor starter	Call		
SBD 240V-1P	240 VAC, single phase pump motor and motor starter	Call		
SBD TODO2CPL	TODO Drybreak Stainless Steel 2" Coupler	Call		
PHC 2SSCOUPLER	Parker Drybreak Stainless Steel 2" Female Coupler	Call		
SBD OPW1772-2	OPW 1772 2" Stainless Steel Female Camlock Coupler	Call		
SBD DB200SS-C	2" Coupler Compatible Drybreak for TODO Style	Call		
CAM F-SS-200	2" Stainless Steel Male NPT to Male Camlock	Call		
CAM D-SS-200-E	2" Stainless Steel Female Camlock x Female NPT Thread	Call		
TOTAL				

Please call for other solutions or custom applications.

50/150 GPM Drum, Tote & Transport Filling

WEIGHTS & MEASURES & NTEP APPROVED The system uses 2 separate NTEP-approved meters for both drum/tote and transport filling.

HIGH FLOW TRANSPORT FILLING Use the secondary MAG meter to fill transports at rates of up to 150 GPM.

DRUM & TOTE & CUSTOMER TANK FILLING Fill drum & totes with DEF for resale with precision and accuracy.

PRE-ASSEMBLED & FORKLIFT COMPATIBLE Systems come fully assembled and can be easily installed.



Made in U.S.A.



METER SPECIFICATIONS

- 2 Weights & Measures Approved Meters
- TCS 682 Stainless Steel Piston Meter for Flows of 2-50 GPM
- Magnetic Resonance (MAG) Meter for flows up to 150 GPM & Higher
- Preset Controller with Electrically Controlled Preset Valves for Precise Delivery & Operator Convenience
- Optional Ticket Printer

PUMP SPECIFICATIONS

- 2" x 1 1/2" Stainless Steel Straight Centrifugal Pump
- Capable of 150 GPM at 75 Ft of Head
- DEF Compatible Seal
- Electrical Power Control Panel Switch
- Variable Speed Drive for Pump Motor Set for High & Low Flow

CONSTRUCTION SPECIFICATIONS

- Pre-assembled and Pre-Wired
- Forklift Compatible 4' x 4' Powder-Coated Frame

PLUMBING SPECIFICATIONS

- 2" Inlet
- 20' of 2" Suction Hose
- 1" Low Flow Outlet to Fill Drums & Totes
- 2" High Flow Outlet to Transport Trucks
- Stainless Steel Filter Housing with 1-Micron Elements
- Optional Air Eliminator Head Added to Filter Housing
- DEF-Compatible Stainless Steel Valves, Camlocks & Plumbing

DISPENSING SPECIFICATIONS

- 25' of 1 1/2" Discharge Hose for Transport Fill with Stainless Steel NPT Ends
- 25' of 1" Discharge Hose for Drum & Tote Fill
- 1 1/2" Poly Fill Nozzle & Micro Matic RSV Fill Valve
- Hose Hanger for 1" Hose

PART NUMBER	DESCRIPTION	DIMENSIONS	LIST PRICE	QTY	TOTAL PRICE
SBD 50150GBDU3	50 & 150 gpm Weights and Measures	58" x 52" x 67"	Call		

PART NUMBER	DESCRIPTION	LIST PRICE	QTY	TOTAL PRICE
TOTAL				

Please call for other solutions or custom applications.

Basic Scale-Based Drum & Tote Filling

WEIGHTS & MEASURES & NTEP APPROVED Accurately measure up to 5,000 lbs.

DRUM & TOTE FILLING Fill drum & totes with DEF for resale with precision and accuracy.

PRE-ASSEMBLED & FORKLIFT COMPATIBLE Systems come fully assembled and can be easily installed.



Made in U.S.A.



SCALE SPECIFICATIONS

- NTEP Approved Weights & Measures Scale
- Accurately measure up to 5,000 Lbs
- Electronic Preset Controller with Scale Display
- Electric Fill Valve Driven by Controller
- Electronic Ticket Printer

PUMP SPECIFICATIONS

- 115VAC, 1 hp Pump
- 230VAC, 1 hp Optional Motor

CONSTRUCTION SPECIFICATIONS

- Sturdy Forklift Accessible Frame
- Pipes, Hoses, & Fittings are DEF Compatible

DISPENSING SPECIFICATIONS

- 20' of 1" Discharge Hose
- Large Fill Nozzle

PART NUMBER	DESCRIPTION	DIMENSIONS	LIST PRICE	QTY	TOTAL PRICE
SBD DRUM/TOTEF	Drum and Tote Preset Fill System w/ Scale	32" x 28" x 63" (Scale is 60" x 60" x 4")	Call		






PART NUMBER	DESCRIPTION	LIST PRICE	QTY	TOTAL PRICE
TOTAL				

Please call for other solutions or custom applications.



KLEERBLUE PORTABLE DELIVERY SYSTEMS

Which Delivery System Is Right for Me?

	HIGH FLOW PORTABLE SKIDS 	MEDIUM FLOW PORTABLE SKIDS 	2-WHEEL CARTS 	ELLIPTICAL LEG POLY TANK 	SADDLEBOX FOR MOBILE REFUELING 
	PG. 17	PG. 19	PG. 21	PG. 23	PG. 24
DELIVERY SPECS					
NTEP & Weights & Measures-Approved Meter	✓	✓	Optional	✓	✓
Max Flow Rate	70 GPM	47 GPM	20/28 GPM	100 GPM	10 GPM
Presettable Meter	Optional	Optional	✓	Optional	Optional
Ticket Printer	✓	✓	✓	Optional	Optional
Air Eliminator	✓	✓	✓	Optional	-
Electric-Rewind Hose Reel	✓	✓	-	Optional	Spring-Rewind
Hose Hangers	-	-	✓	Optional	-
POWER SPECS					
Gasoline Generator/Electric Pump	✓	✓	-	Optional	-
Gasoline Powered Pump	✓	✓	-	Optional	-
110 Volt Electrical	-	-	✓	Optional	✓
CONSTRUCTION SPECS					
Forklift Compatible Skid Mounted	✓	✓	-	✓	-
2-Wheel Hand Cart Mounted	-	-	✓	-	-
Pre-Assembled & Pre-Wired	✓	✓	✓	✓	✓
TANK SPECS					
Tank Included	-	-	-	✓	✓

High Flow Portable Skid with Gasoline Generator/Electric Pump

WEIGHTS & MEASURES & NTEP APPROVED The TCS 700 SSD meter is approved for 20 to 100 GPM. The system allows for flow rates up to 70 GPM.

PORTABLE Move unit around a facility or place in a truck for on-site customer tank fueling and/or wet-hosing

PRE-ASSEMBLED & FORKLIFT COMPATIBLE Systems come fully assembled and can be easily installed thanks to their forklift accessible platform.



Made in U.S.A.



METER SPECIFICATIONS

- Weights & Measures Approved Meter
- System Flow Rates of 20 to 70 GPM
- TCS 700 Stainless Steel Rotary Meter
- Ticket Printer and Air Eliminator
- Option: Preset & Valve

PUMP SPECIFICATIONS

- 2" x 2" Stainless Steel Self-Priming Pump
- DEF Compatible Seal
- 3 HP 1 phase TEFC Motor
- Honda EM6500 70dB Generator with Electric Start

PLUMBING SPECIFICATIONS

- Stainless Steel Filter with 1-Micron Cartridges
- 20' of 2" Suction Hose
- Stainless Steel Camlocks

DISPENSING SPECIFICATIONS

- 100' of 1 1/4" Discharge Hose
- 1 1/2" Poly Fill Nozzle & Micro Matic RSV Fill Valve
- Electric-Rewind Hose Reel

CONSTRUCTION SPECIFICATIONS

- Pre-Assembled and Pre-Wired
- Forklift Compatible 4' x 4' Powder-Coated Frame
- Removable Corner Posts

PART NUMBER	DESCRIPTION	DIMENSIONS	LIST PRICE	QTY	TOTAL PRICE
SBD 70G-DSM-PV	High Flow Portable Skid with Gasoline Generator/Electric Pump (Does not include Meter Preset and Valve)	4' wide x 4' long x 5' tall	Call		
SBD 70G-DSM	High Flow Portable Skid with Gasoline Generator/Electric Pump (Includes Meter Preset and Valve)	4' wide x 4' long x 5' tall	Call		

PART NUMBER	DESCRIPTION	LIST PRICE	QTY	TOTAL PRICE
SBD TODO2CPL	TODO Drybreak Stainless Steel 2" Coupler	Call		
PHC 2SSCOUPLER	Parker Drybreak Stainless Steel 2" Female Coupler	Call		
SBD OPW1772-2	OPW 1772 2" Stainless Steel Female Camlock Coupler	Call		
SBD DB200SS-C	2" Coupler Compatible Drybreak for TODO Style	Call		
CAM F-SS-200	2" Stainless Steel Male NPT to Male Camlock	Call		
CAM D-SS-200-E	2" Stainless Steel Female Camlock x Female NPT Thread	Call		
SBD PJSKID	Pallet Jack Accessible Skid Option	Call		
TOTAL				

For other product transfer solutions, such as windshield washer fluid or anti-freeze, please call for information.

High Flow Portable Skid with Gasoline Powered Pump

WEIGHTS & MEASURES & NTEP APPROVED The TCS 700 SSD meter is approved for 20 to 100 GPM. The system allows for flow rates up to 70 GPM.

PORTABLE Move unit around a facility or place in a truck for on-site fueling and/or wet-hosing

PRE-ASSEMBLED & FORKLIFT COMPATIBLE Systems come fully assembled and can be easily installed thanks to their forklift accessible platform.



Made in U.S.A.



METER SPECIFICATIONS

- Weights & Measures Approved Meter
- System Flow Rates of 20 to 70 GPM
- TCS 700 Stainless Steel Rotary Meter
- Ticket Printer and Air Eliminator
- Option: Preset & Valve

PUMP SPECIFICATIONS

- 2" x 2" Stainless Steel Self-Priming Pump
- DEF Compatible Seal
- 5.5 HP Honda Electric Start Engine

PLUMBING SPECIFICATIONS

- Stainless Steel Filter with 1-Micron Cartridges
- 20' of 2" Suction Hose
- Stainless Steel Camlocks

DISPENSING SPECIFICATIONS

- 100' of 1 1/4" Discharge Hose
- 1 1/2" Poly Fill Nozzle & Micro Matic RSV Fill Valve
- Electric-Rewind Hose Reel

CONSTRUCTION SPECIFICATIONS

- Pre-Assembled and Pre-Wired
- Forklift Compatible 4' x 4' Powder-Coated Frame
- Removable Corner Posts

PART NUMBER	DESCRIPTION	DIMENSIONS	LIST PRICE	QTY	TOTAL PRICE
SBD 70G-DSG-PV	High Flow Portable Skid with Gasoline Pump (Does not include Meter Preset and Valve)	4' wide x 4' long x 5' tall	Call		
SBD 70G-DSG	High Flow Portable Skid with Gasoline Pump (Includes Meter Preset and Valve)	4' wide x 4' long x 5' tall	Call		

PART NUMBER	DESCRIPTION	LIST PRICE	QTY	TOTAL PRICE
SBD TODO2CPL	TODO Drybreak Stainless Steel 2" Coupler	Call		
PHC 2SSCOUPLER	Parker Drybreak Stainless Steel 2" Female Coupler	Call		
SBD OPW1772-2	OPW 1772 2" Stainless Steel Female Camlock Coupler	Call		
SBD DB200SS-C	2" Coupler Compatible Drybreak for TODO Style	Call		
CAM F-SS-200	2" Stainless Steel Male NPT to Male Camlock	Call		
CAM D-SS-200-E	2" Stainless Steel Female Camlock x Female NPT Thread	Call		
SBD PJSKID	Pallet Jack Accessible Skid Option	Call		
TOTAL				

For other product transfer solutions, such as windshield washer fluid or anti-freeze, please call for information.

Medium Flow Portable Skid with Gasoline Generator/Electric Pump

WEIGHTS & MEASURES & NTEP APPROVED The TCS 682 SSD meter is approved for 2 to 50 GPM. The system allows for flow rates up to 47 GPM.

PORTABLE Move unit around a facility or place in a truck for on-site customer tank fueling and/or wet-hosing

PRE-ASSEMBLED & FORKLIFT COMPATIBLE Systems come fully assembled and can be easily installed thanks to their forklift accessible platform.



Made in U.S.A.



METER SPECIFICATIONS

- Weights & Measures Approved Meter
- System Flow Rates of 2 to 47 GPM (US)
- Max Flow Rate of 120 LPM (Canada)
- TCS 682 Stainless Steel Piston Meter
- Ticket Printer and Air Eliminator
- Option: Preset & Valve

PUMP SPECIFICATIONS

- 2" x 2" Stainless Steel Self-Priming Pump
- DEF Compatible Seal
- 3 HP 1 phase TEFC Motor
- Honda EM6500 70dB Generator with Electric Start

PLUMBING SPECIFICATIONS

- Stainless Steel Filter with 1-Micron Cartridges
- 20' of 2" Suction Hose
- Stainless Steel Camlocks

DISPENSING SPECIFICATIONS

- 100' of 1 1/4" Discharge Hose
- 1 1/2" Poly Fill Nozzle & Micro Matic RSV Fill Valve
- Electric-Rewind Hose Reel

CONSTRUCTION SPECIFICATIONS

- Pre-Assembled and Pre-Wired
- Forklift Compatible 4' x 4' Powder-Coated Frame
- Removable Corner Posts

PART NUMBER	DESCRIPTION	DIMENSIONS	LIST PRICE	QTY	TOTAL PRICE
SBD 50G-DSM-PV	Medium Flow Portable Skid with Gasoline Generator/Electric Pump (Does not include Meter Preset and Valve)	4' wide x 4' long x 5' tall	Call		
SBD 50G-DSM	Medium Flow Portable Skid with Gasoline Generator/Electric Pump (Includes Meter Preset and Valve)	4' wide x 4' long x 5' tall	Call		
SBD 50G-DSMC-PV	Canada Medium Flow Portable Skid with Gasoline Generator/Electric Pump (Does Not Have Meter Preset and Valve)	4' wide x 4' long x 5' tall	Call		
SBD 50G-DSMC	Canada Medium Flow Portable Skid with Gasoline Generator/Electric Pump (Includes Meter Preset and Valve)	4' wide x 4' long x 5' tall	Call		

PART NUMBER	DESCRIPTION	LIST PRICE	QTY	TOTAL PRICE
SBD TODO2CPL	TODO Drybreak Stainless Steel 2" Coupler	Call		
PHC 2SSCOUPLER	Parker Drybreak Stainless Steel 2" Female Coupler	Call		
SBD OPW1772-2	OPW 1772 2" Stainless Steel Female Camlock Coupler	Call		
SBD DB200SS-C	2" Coupler Compatible Drybreak for TODO Style	Call		
CAM F-SS-200	2" Stainless Steel Male NPT to Male Camlock	Call		
CAM D-SS-200-E	2" Stainless Steel Female Camlock x Female NPT Thread	Call		
SBD PJSKID	Pallet Jack Accessible Skid Option	Call		
TOTAL				

For other product transfer solutions, such as windshield washer fluid or anti-freeze, please call for information.

Medium Flow Portable Skid with Gasoline Powered Pump

WEIGHTS & MEASURES & NTEP APPROVED The TCS 682 SSD meter is approved for 2 to 50 GPM. The system allows for flow rates up to 47 GPM.

PORTABLE Move unit around a facility or place in a truck for on-site fueling and/or wet-hosing

PRE-ASSEMBLED & FORKLIFT COMPATIBLE Systems come fully assembled and can be easily installed thanks to their forklift accessible platform.



Made in U.S.A.



METER SPECIFICATIONS

- Weights & Measures Approved Meter
- System Flow Rates of 2 to 47 GPM (US)
- Max Flow Rate of 120 LPM (Canada)
- TCS 682 Stainless Steel Piston Meter
- Ticket Printer and Air Eliminator
- Option: Preset & Valve

PUMP SPECIFICATIONS

- 2" x 2" Stainless Steel Self-Priming Pump
- DEF Compatible Seal
- 5.5 HP Honda Electric Start Engine

PLUMBING SPECIFICATIONS

- Stainless Steel Filter with 1-Micron Cartridges
- 20' of 2" Suction Hose
- Stainless Steel Camlocks

DISPENSING SPECIFICATIONS

- 100' of 1 1/4" Discharge Hose
- 1 1/2" Poly Fill Nozzle & Micro Matic RSV Fill Valve
- Electric-Rewind Hose Reel

CONSTRUCTION SPECIFICATIONS

- Pre-Assembled and Pre-Wired
- Forklift Compatible 4' x 4' Powder-Coated Frame
- Removable Corner Posts

PART NUMBER	DESCRIPTION	DIMENSIONS	LIST PRICE	QTY	TOTAL PRICE
SBD 50G-DSMG-PV	Medium Flow Portable Skid with Gasoline Pump (Does not include Meter Preset and Valve)	4' wide x 4' long x 5' tall	Call		
SBD 50G-DSMG	Medium Flow Portable Skid with Gasoline Pump (Includes Meter Preset and Valve)	4' wide x 4' long x 5' tall	Call		
SBD 50DSMGC-PV	Canada Medium Flow Portable Skid with Gasoline Pump (Does Not Have Meter Preset and Valve)	4' wide x 4' long x 5' tall	Call		
SBD 50G-DSMGC	Canada Medium Flow Portable Skid with Gasoline Pump (Includes Meter Preset and Valve)	4' wide x 4' long x 5' tall	Call		

PART NUMBER	DESCRIPTION	LIST PRICE	QTY	TOTAL PRICE
SBD TODO2CPL	TODO Drybreak Stainless Steel 2" Coupler	Call		
PHC 2SSCOUPLER	Parker Drybreak Stainless Steel 2" Female Coupler	Call		
SBD OPW1772-2	OPW 1772 2" Stainless Steel Female Camlock Coupler	Call		
SBD DB200SS-C	2" Coupler Compatible Drybreak for TODO Style	Call		
CAM F-SS-200	2" Stainless Steel Male NPT to Male Camlock	Call		
CAM D-SS-200-E	2" Stainless Steel Female Camlock x Female NPT Thread	Call		
SBD PJSKID	Pallet Jack Accessible Skid Option	Call		
TOTAL				

For other product transfer solutions, such as windshield washer fluid or anti-freeze, please call for information.

Top Withdrawal 2-Wheel Carts



Made in U.S.A.



WEIGHTS & MEASURES & NTEP APPROVED The TCS 682 SSD meter is approved for 2 to 50 GPM. The cart allows for flow rates up to 20 GPM.

PORTABLE Move unit around a facility or on-site for customer tank fueling and/or wet-hosing

TURN-KEY Systems come fully assembled and are ready to move DEF upon delivery.

CLOSED SYSTEM When used in conjunction with supplied Micro Matic RSV fill couplers, these carts can create a closed/contaminant-free environment. (Requires the tote or container to have a compatible RSV container valve.)

VERSATILE Carts can be used to withdraw DEF from BOTH the top and bottom of a tank.

METER SPECIFICATIONS

- Weights & Measures Approved Meter
- System Flow Rates of 2 to 20 GPM
- TCS 682 Stainless Steel Piston Meter
- Resettable Register, Ticket Printer, and Air Eliminator
- Option: TCS 3000 Electronic Register & Bluetooth Ticket Printer
- Option: NON-Weights & Measures Stainless Steel Turbine Meter (Non-Resale Applications only)

PUMP SPECIFICATIONS

- 1 1/2" Stainless Steel Self-Priming Pump
- DEF Compatible Seal
- 110 Volt 1 Phase TEFC Motor
- 20' Electrical Cord with Pump Power On/Off Switch

PLUMBING SPECIFICATIONS

- DEF-Compatible Stainless Steel Valves
- 10' of 1 1/2" Suction Hose with 2" Female Camlock
- Stainless Steel Air Eliminator
- Option: Stainless Steel Filter Housing & 1-Micron Cartridge (Reduces Max Rate to 18 GPM)

DISPENSING SPECIFICATIONS

- 20' of 1" Discharge Hose with 1 1/2" Female Camlock
- Hose Hangers
- 2 Micro Matic RSV Fill Couplers for Closed System
- 1 1/2" Polypropylene Fill Nozzle with Male Camlock

CONSTRUCTION SPECIFICATIONS

- Pre-Assembled and Pre-Wired
- Mounted on Hand Cart with 2 Pneumatic Tires

PART NUMBER	DESCRIPTION	DIMENSIONS	LIST PRICE	QTY	TOTAL PRICE
SBD TLC330WM-T	Top Withdrawal 2-Wheel Cart (22 GPM)	28" wide x 22" depth x 50" tall	Call		
SBD TLC330WMFT	Top Withdrawal 2-Wheel Cart with Stainless Steel 1-Micron Filter (18 GPM)	28" wide x 22" depth x 50" tall	Call		
SBD TLC330WMTE	Top Withdrawal 2-Wheel Cart with TCS 3000 Electronic Register & Bluetooth Printer (22 GPM)	28" wide x 22" depth x 50" tall	Call		
SBD TLC330WMFTE	Top Withdrawal 2-Wheel Cart with Stainless Steel Filter & TCS 3000 Electronic Register & Bluetooth Printer (18 GPM)	28" wide x 22" depth x 50" tall	Call		
SBD TLT330WMFT	2-Wheel Cart for Canada Weights & Measures with Stainless Steel 1-Micron Filter (18 GPM 68 LPM)	28" wide x 22" long x 50" tall	Call		
SBD TLC330-T	Top Withdrawal 2-Wheel Cart with NON-Weights & Measures Meter (24 GPM)	28" wide x 22" depth x 50" tall	Call		

PART NUMBER	DESCRIPTION	LIST PRICE	QTY	TOTAL PRICE
682 15SS3ATD	Less Weights & Measures Meter	Call		
SBD 682PREST-V	Mechanical Preset and Preset Valve	Call		
SBD TODO2CPL	TODO Drybreak Stainless Steel 2" Coupler	Call		
PHC 2SSCOUPLER	Parker Drybreak Stainless Steel 2" Female Coupler	Call		
SBD OPW1772-2	OPW 1772 2" Stainless Steel Female Camlock Coupler	Call		
SBD DB200SS-C	2" Coupler Compatible Drybreak for TODO Style	Call		
CAM F-SS-200	2" Stainless Steel Male NPT to Male Camlock	Call		
CAM D-SS-200-E	2" Stainless Steel Female Camlock x Female NPT Thread	Call		

For other product transfer solutions, such as windshield washer fluid or anti-freeze, please call for info.

TOTAL

Bottom Withdrawal 2-Wheel Carts

WEIGHTS & MEASURES & NTEP APPROVED The TCS 682 SSD meter is approved for 2 to 50 GPM. The cart allows for flow rates up to 28 GPM.

PORTABLE Move unit around a facility or on-site for customer tank fueling and/or wet-hosing

TURN-KEY Systems come fully assembled and are ready to move DEF upon delivery.

CLOSED SYSTEM When used in conjunction with supplied Micromatic RSV fill couplers, these carts can create a closed/contaminant-free environment. (Requires the tote or container to have a compatible RSV container valve.)

HIGHER FLOW RATE While these carts can only pull from bottom outlets, they can achieve flow rates up to 28 GPM.



Made in U.S.A.



METER SPECIFICATIONS

- Weights & Measures Approved Meter
- System Flow Rates of 2 to 28 GPM
- TCS 682 Stainless Steel Piston Meter
- Resettable Register, Ticket Printer, and Air Eliminator
- Option: TCS 3000 Electronic Register & Bluetooth Ticket Printer
- Option: NON-Weights & Measures Stainless Steel Turbine Meter (Non-Resale Applications only)

PUMP SPECIFICATIONS

- 1 1/4" x 1" Stainless Steel Straight Centrifugal Pump
- DEF Compatible Seal
- 110 Volt 1 Phase TEFC Motor
- 20' Electrical Cord with Pump Power On/Off Switch

PLUMBING SPECIFICATIONS

- DEF-Compatible Stainless Steel Valves
- 10' of 1 1/2" Suction Hose with 2" Female Camlock
- Stainless Steel Air Eliminator
- Option: Stainless Steel Filter Housing & 1-Micron Cartridge (Reduces Max Flow Rate to 21 GPM)

DISPENSING SPECIFICATIONS

- 20' of 1" Discharge Hose with 1 1/2" Female Camlock
- Hose Hangers
- Micro Matic RSV Fill Coupler for Closed System
- 1 1/2" Polypropylene Fill Nozzle with Male Camlock

CONSTRUCTION SPECIFICATIONS

- Pre-Assembled and Pre-Wired
- Mounted on Hand Cart with 2 Pneumatic Tires

PART NUMBER	DESCRIPTION	DIMENSIONS	LIST PRICE	QTY	TOTAL PRICE
SBD TLC-330WM	Bottom Withdrawal 2-Wheel Cart (28 GPM)	26" wide x 22" depth x 50" tall	Call		
SBD TLC330-WMF	Bottom Withdrawal 2-Wheel Cart with Stainless Steel 1-Micron Filter (21 GPM)	26" wide x 22" depth x 50" tall	Call		
SBD TLC330WME	Bottom Withdrawal 2-Wheel Cart with TCS 3000 Electronic Register & Bluetooth Printer (28 GPM)	26" wide x 22" depth x 50" tall	Call		
SBD TLC330WMFE	Bottom Withdrawal 2-Wheel Cart with Stainless Steel Filter & TCS 3000 Electronic Register & Bluetooth Printer (21 GPM)	26" wide x 22" depth x 50" tall	Call		
SBD TLC-330	Bottom Withdrawal 2-Wheel Cart with NON-Weights & Measures Meter (39 GPM)	26" wide x 22" depth x 50" tall	Call		

PART NUMBER	DESCRIPTION	LIST PRICE	QTY	TOTAL PRICE
682 15SS3ATD	Less Weights & Measures Meter	Call		
SBD 682PREST-V	Mechanical Preset and Preset Valve	Call		
SBD TODO2CPL	TODO Drybreak Stainless Steel 2" Coupler	Call		
PHC 2SSCOUPLER	Parker Drybreak Stainless Steel 2" Female Coupler	Call		
SBD OPW1772-2	OPW 1772 2" Stainless Steel Female Camlock Coupler	Call		
SBD DB200SS-C	2" Coupler Compatible Drybreak for TODO Style	Call		
CAM F-SS-200	2" Stainless Steel Male NPT to Male Camlock	Call		
CAM D-SS-200-E	2" Stainless Steel Female Camlock x Female NPT Thread	Call		

For other product transfer solutions, such as windshield washer fluid or anti-freeze, please call for info.

TOTAL

Elliptical Poly Tank & Pump Delivery Skid

WEIGHTS & MEASURES & NTEP APPROVED The TCS682 or 700 SSD meters are approved for DEF delivery.

PORTABLE Transport large DEF volumes on-site for customer tank fueling.

LOW CENTER OF GRAVITY The elliptical shape allows for greatest capacity and lowest center of gravity.

OPTIMAL STABILITY Internal baffles help deal with DEF inertia that occurs with vehicle movement.

CHOICE OF SIZES Tanks are offered in 535-4035 gallon sizes.



Made in U.S.A.

SBD 4035EDS-7E

PUMP & METER SPECIFICATIONS

- DEF Compatible Stainless Steel Pump
- NTEP Weights and Measures-Approved TCS 682 (up to 50 GPM) or TCS 700 (up to 100 GPM) Meters
- Option: Non-NTEP Meters
- Gas, Electric, or Hydraulic-Powered Pumps Available

PLUMBING SPECIFICATIONS

- 50' Hose Reel, Spring-Rewind, or Electric Rewind
- 1.25" Discharge Hose
- Stainless Steel Components & Plumbing, DEF Rated Hoses
- 1-Micron Filter

TANK SPECIFICATIONS

- Bottom Outlet
- Internal Baffles
- Tank Fittings
- Hinged Manway
- Vent
- Straps

CONSTRUCTION SPECIFICATIONS

- Powder Coated Skid & Pump Platform
- Option: Aluminum Enclosure (as Shown) to Protect Delivery Equipment

PART NUMBER	DESCRIPTION	DIMENSIONS	LIST PRICE	QTY	TOTAL PRICE
SBD 2035EDS-6	2035 Tank, Gas Engine pump, 682 meter+ticket printer, 50 foot hose reel		Call		
SBD 4035EDS-7	4035 Tank, Gas Engine pump, 700 meter+ticket printer, 50 foot hose reel		Call		
SBD 4035EDS-7E	4035 Tank, Gas Engine pump, 700 meter+ticket printer, 50 foot hose reel, aluminum enclosure		Call		

PART NUMBER	DESCRIPTION	LIST PRICE	QTY	TOTAL PRICE
SBD 1035EL	1035 Gallon Elliptical Tank Only with Fittings	Call		
SBD 2035EL	2035 Gallon Elliptical Tank Only with Fittings	Call		
SBD 3135EL	3135 Gallon Elliptical Tank Only with Fittings	Call		
SBD 4035EL	4035 Gallon Elliptical Tank Only with Fittings	Call		
SBD 910415	TODO 2" Male Drybreak Tank Fill Adapter Kit	Call		
SBD 911178	2" Male Compatible Drybreak for TODO Style Kit	Call		
SBD 910416	OPW 2" Male Drybreak Tank Fill Adapter Kit	Call		
SBD 910381	Parker 2" Male Drybreak Tank Fill Adapter Kit	Call		
TOTAL				

For Turn-Key Portable Pump & Tank Skid Transfer Systems, please call for information.

Saddlebox For Mobile Refueling



Made in U.S.A.

DEF WET HOISING Designed to attach to diesel delivery trucks, KleerBlue's Saddlebox can be easily installed to allow for DEF wet hosing.

FLEET & RETAIL SOLUTIONS Choose between a fleet-ready turbine meter or a NTEP-Approved 682 meter with ticket printer for retail applications. Or, skip the meter altogether for an economical solution.

SUPERIOR DESIGN The KleerBlue Saddlebox has been engineered with features such as a low maintenance aluminum cabinet, large 110 gallon tank, and 50 ft extra long hose.

CABINET SPECIFICATIONS

- Aluminum Cabinet with 2 Doors
- 110 Gallon Poly Tank
- Insulation
- 12 Volt Heater (Truck Running)
- 120 Volt Heater (Truck Off)
- 1" SS Filter with 1 Micron Cartridge
- 50' of 3/4" Hose
- Spring-Rewind Hose Reel

PUMP & METER SPECIFICATIONS

- 12 Volt Stainless Steel DEF Pump
- Optional 1" Turbine Meter (Fleet/Commercial)
- 682 Meter with Register, Ticket Printer, & Air Eliminator (Retail)

PART NUMBER	DESCRIPTION	DIMENSIONS	LIST PRICE	QTY	TOTAL PRICE
SBD SADDLE-TWF	Complete system with Tank, Turbine, Hose Reel, Filter, and Cabinet	78" Long x 29 1/8" Deep x 33 1/4" High	Call		
SBD SADDLE-F	Complete system with Tank, Hose Reel, Filter, and Cabinet - No Meter	78" Long x 29 1/8" Deep x 33 1/4" High	Call		
SBD SADDLE-RWF	Complete system with Tank, Weights & Measures meter, Hose & Reel, Filter, and Cabinet	78" Long x 29 1/8" Deep x 33 1/4" High	Call		






PART NUMBER	DESCRIPTION	LIST PRICE	QTY	TOTAL PRICE
SBD KBDEDHI-SB	Deduction for No Heat or Insulation	Call		
TOTAL				

Please see Pg. 48 for Nozzles and Hose End Accessories



KLEERBLUE RAIL CAR TRANSLOADING SYSTEMS

Which Transloading System Is Right for Me?

	BASIC STATIONARY TRANSLOAD SKID 	SELF-POWERED STATIONARY TRANSLOAD SKID 	MAXIMUM PRECISION STATIONARY TRANSLOAD SKID 	ELECTRIC OR GAS POWERED TRANSLOAD SYSTEMS 	AIR-OFF TRANSLOAD SYSTEMS 
	PG. 27	PG. 28	PG. 28	PG. 30	PG. 31
DESIGN SPECS					
NTEP & Weights & Measures-Approved Meter	✓	✓	✓	✓	Optional
Receive to Storage	✓	✓	✓	-	✓
Storage to Loadout	✓	✓	✓	✓	-
Receive to Loadout	✓	✓	✓	-	✓
Storage to Tote Packaging	Optional	-	Optional	-	-
POWER SPECS					
Air-Off	-	-	-	-	✓
Electric-Start Gas Engine	-	✓	-	Optional	-
480 Volt Power & Electric Motor	✓	-	✓	✓	-
Variable Frequency Drive (VFD)	Optional	-	Optional	-	-
CONSTRUCTION SPECS					
Stationary	✓	✓	✓	-	-
Mobile	-	-	-	✓	✓
Insulation & Heating	-	-	-	✓	-
Forklift-Compatible Skid	✓	✓	✓	-	-
Towable Trailer with Pneumatic Tires	-	-	-	✓	✓
Pre-Assembled & Pre-Wired	✓	✓	✓	✓	✓

Basic Stationary Transload Skid



Made in U.S.A.

System shown has pump, air release valve, filter, MAG meter, manual outlet valve, discharge hose, and push button start/stop

WEIGHTS & MEASURES APPROVED The MAG meter is approved for flows of 65-250 GPM (and higher).

VERSATILE This unit is designed to unload both rail cars and transports at rates of up to 250 GPM.

PRE-ASSEMBLED & FORKLIFT COMPATIBLE Systems come fully assembled and can be easily installed.

METER SPECIFICATIONS

- NTEP Weights & Measures DEF Approved Meter
- System Flow Rate of 65-250 GPM
- Optional Air Eliminator, Preset, & Ticket Printer

PUMP SPECIFICATIONS

- 3" x 3" Stainless Steel Self-Priming Pump
- Industrial-Grade DEF Compatible Seal
- 10 HP, 480VAC 3-phase TEFC Motor
- Option: Gas Engine-Powered Pump

PLUMBING SPECIFICATIONS

- Stainless Steel Plumbing Components & DEF-Approved Hose
- Full Flow Ball Valve Inlet
- Manual Outlet Valve or Optional Electric or Air-Operated Valve for Preset
- Optional 1-Micron Filter.
- Optional Inlet & Outlet Hoses.

CONSTRUCTION SPECIFICATIONS

- Pre-Assembled and Pre-Wired
- Forklift Compatible Powder-Coated Frame

PART NUMBER	DESCRIPTION	DIMENSIONS	LIST PRICE	QTY	TOTAL PRICE
SBD TL250M	Pump, Meter, Manual Valves, Push Button Start	62" x 28" x 66"	Call		
SBD TL250MF	Pump, Meter, Manual Valves, Push Button Start, Filter	71" x 52" x 71"	Call		
SBD TL250MFPS	Pump, Meter, Filter, Preset, Electric Valve	71" x 52" x 71"	Call		

PART NUMBER	DESCRIPTION	LIST PRICE	QTY	TOTAL PRICE
SBD TL250B-U1	Upgrade Preset to TCS 3000 in Lieu of FW Controller	Call		
SBD TL250B-U2	Upgrade to high/low flow valves if using the TCS 3000 controller	Call		
SBD 910896	Pump and Motor only on Bedplate, 250 GPM, No Motor Starter	Call		
SBD SH4X20MXM	4" Suction Hose with Male NPT Both Ends	Call		
SBD SDH3X20MXM	3" Suction/Discharge Hose with Male NPT Both Ends	Call		
TOTAL				

For other transfer solutions, please call for information.



SBD TL250M



SBD TL 250MF



SBD TL250MFPS



SBD TL250F-M
With Filter, Less Meter



SBD TL250F-M
With Gas Engine

Self-Powered Stationary Transload Skid



Made in U.S.A.

METER SPECIFICATIONS

- NTEP Weights & Measures DEF Approved Magnetic Resonance (MAG) Meter
- System Flow Rate of up to 250 GPM
- NTEP Meter Register & Preset Controller
- High Flow/Low Flow Dual Outlet Air-Actuated Valves
- Electronic Ticket Printer
- Air Eliminator

PUMP SPECIFICATIONS

- Industrial Grade Stainless Steel Self-Priming Centrifugal Pump
- Gasoline Powered Engine Drive

WEIGHTS & MEASURES APPROVED The MAG meter is approved for flows of 65-250 GPM (and higher).

VERSATILE This unit is designed to unload both rail cars and transports at rates of up to 250 GPM.

PRE-ASSEMBLED & FORKLIFT COMPATIBLE Systems come fully assembled and can be easily installed.

PLUMBING SPECIFICATIONS

- Stainless Steel Filter Housing, Rated at 250 GPM with 1-Micron Filter Elements
- 3" Flanged (ANSI 150 lb) Inlet & Outlet
- DEF-Compatible Pipes, Hoses & Fittings
- Air Valves that Can be Purged to Prevent Freezing

CONSTRUCTION SPECIFICATIONS

- Pre-Assembled and Pre-Wired
- Forklift Compatible Powder-Coated Frame

PART NUMBER	DESCRIPTION	DIMENSIONS	LIST PRICE	QTY	TOTAL PRICE
SBD TSLGASSKID	Self Powered Transload Skid as shown in photo	98" x 61" x 74"	Call		

PART NUMBER	DESCRIPTION	LIST PRICE	QTY	TOTAL PRICE
TOTAL				

For other transfer solutions, please call for information.

Maximum Precision Stationary Transload Skid



Made in U.S.A.

WEIGHTS & MEASURES APPROVED The system uses an NTEP Weights & Measures-approved, ultra-precise mass flow meter. Approved for custody transfer in the US and Canada.

VERSATILE This unit is designed to unload and load rail cars, transport trucks, and totes. Optional variable flow rate.

EASY MODE SELECTION The system's control console selector switch allows the operator to quickly switch between receive to storage, storage to loadout, or receive to loadout.

PRE-ASSEMBLED & FORKLIFT COMPATIBLE Systems come fully assembled and can be easily installed.

METER SPECIFICATIONS

- Weights & Measures Approved Meter
- System Flow Rates of 40 to 250 GPM
- 3" Stainless Steel Mass Flow Meter
- Optional MAG Meter Instead of Mass Flow Meter
- Stainless Steel Air Eliminator
- Slip Ticket Printer
- Presettable Volume

PUMP SPECIFICATIONS

- 3" x 3" Stainless Steel Self-Priming Pump
- Stainless Steel & DEF Compatible Seal
- 10 HP 3 Phase TEFC Motor
- Optional 480 Volt 3 Phase Power Center with Variable Frequency Drive (VFD)
- Air Supply Must Be Available

PLUMBING SPECIFICATIONS

- Air Control & Manual Valves
- 3-Way Control Center to Select Between Receiving to Storage, Storage to Loadout, & Receiving to Loadout
- 20' of 3" Suction Hose
- Stainless Steel Filter with 1-Micron Cartridges
- DEF-Compatible Stainless Steel Valves, Camlocks, & Welded Fittings

CONSTRUCTION SPECIFICATIONS

- Pre-Assembled and Pre-Wired
- Forklift Compatible Powder-Coated Frame

PART NUMBER	DESCRIPTION	DIMENSIONS	LIST PRICE	QTY	TOTAL PRICE
SBD TLSULL	Transload Skid: Receive to Storage, Storage to Loadout, Receive to Loadout	94" wide x 92" long x 72" tall	Call		
SBD TLSULL-2	Transload Skid: Receive to Storage, Storage to Loadout, Storage to Tote Packaging	94" wide x 92" long x 72" tall	Call		
SBD TLSULL-3	Non-Weights & Measures Transload Skid: Receive to Storage, Storage to Loadout, Receive to Loadout	94" wide x 92" long x 72" tall	Call		

PART NUMBER	DESCRIPTION	LIST PRICE	QTY	TOTAL PRICE
TOTAL				

For other transfer solutions, please call for information.

Electric or Gas Powered Mobile Transload Systems



Made in U.S.A.

WEIGHTS & MEASURES APPROVED OPTION Optionally equipped with a Weights & Measures Turbine Meter, this meter is approved for 40 to 250 GPM.

MOBILE Precisely position units between rail cars and transports. The added mobility allows units to be moved around locations or between facilities.

INSULATION & HEATING OPTION Offload DEF even in the most extreme temperatures with the optional insulation & heating package.

PRE-ASSEMBLED Systems come fully assembled and can be easily towed into place.

METER SPECIFICATIONS

- System Flow Rates of 40 to 250 GPM
- Stainless Steel Turbine Meter
- Resettable Register
- Option: Weights & Measures Meter

PUMP SPECIFICATIONS

- 3" Stainless Steel Self-Priming Pump
- DEF Compatible Seal
- Electric Option: 10 HP 3 Phase TEFC Motor
- Electric Option: 480 Volt Power Control Panel & Cable with Power Disconnect
- Gas Option: 13 HP Honda Electric-Start Gasoline Engine

PLUMBING SPECIFICATIONS

- 20' of 3" Suction & Discharge Hoses
- Stainless Steel Filter with 1-Micron Cartridges
- Stainless Steel Flanges & Welded Fittings
- Option: Heat & Insulation Package

CONSTRUCTION SPECIFICATIONS

- Pre-Assembled and Pre-Wired
- Powder-Coated Towable Trailer with Pneumatic Tires

PART NUMBER	DESCRIPTION	DIMENSIONS	LIST PRICE	QTY	TOTAL PRICE
SBD TLPM	Electric Mobile Transload System	4' wide x 8' long towable trailer	Call		
SBD TLPMHI	Electric Mobile Transload System with Insulation & Heating Package	4' wide x 8' long towable trailer	Call		
SBD TLPMWM	Weights & Measures-Approved Electric Mobile Transload System	4' wide x 8' long towable trailer	Call		
SBD TLPMWMHI	Weights & Measures-Approved Electric Mobile Transload System with Insulation & Heating Package	4' wide x 8' long towable trailer	Call		
SBD TLPGM-S	Gas Engine Pump Transload Skid	4' wide x 8' long towable trailer	Call		
SBD TLPM-G-HI	Dual Electric and Gas Power Mobile Towable Trailer	4' wide x 8' long towable trailer	Call		
SBD TLPGM-S-H1	Gas Engine with Heat and Insulation	4' wide x 8' long towable trailer	Call		

PART NUMBER	DESCRIPTION	LIST PRICE	QTY	TOTAL PRICE
		TOTAL		

For other transfer solutions, please call for information.

Air-Off Mobile Transload Systems

MOBILE Precisely position units between rail cars and transports. The added mobility allows units to be moved around locations or between facilities.

PRE-ASSEMBLED Systems come fully assembled and can be easily towed into place.



Made in U.S.A.



METER SPECIFICATIONS

- 3" Stainless Steel Turbine Meter
- Resettable Register

PLUMBING SPECIFICATIONS

- 20' of 3" Suction & Discharge Hoses
- Stainless Steel Filter with 1-Micron Cartridges
- Stainless Steel Flanges & Welded Fittings

CONSTRUCTION SPECIFICATIONS

- Pre-Assembled and Pre-Wired
- Powder-Coated Towable Trailer with Pneumatic Tires

PART NUMBER	DESCRIPTION	DIMENSIONS	LIST PRICE	QTY	TOTAL PRICE
SBD TLAM	Air-Off Mobile Transload System	Towable Trailer	Call		
SBD TLAM-HI	Air-Off Mobile Transload System with Heat and Insulation	Towable Trailer	Call		

PART NUMBER	DESCRIPTION	LIST PRICE	QTY	TOTAL PRICE
		TOTAL		

For other transfer solutions, please call for information.



KLEERBLUE DEF MANUFACTURING FACILITIES

DEF Liquid Concentrate & Dry Manufacturing Facilities

CUSTOM With 40+ years experience designing blending production facilities, we can design a turn-key solution to meet your DEF manufacturing needs.

MANUAL OR FULLY AUTOMATED Experience a high ROI with full production automation, including remote access and monitoring. These systems offer the industry's highest accuracy!

TOP-OF-LINE EQUIPMENT Enjoy low maintenance and long system life with true DEF compatible equipment and high quality parts.



Made in U.S.A.



6

FACILITY

- Liquid Urea Concentrate, Dry Prill Blending Systems, or Dual Combination
- Custom Facility Design to Meet Specific Needs
- Can be Low or High Volume Facility
- KleerBlue Provides Equipment and Facility Layout
- Turn-Key Solution from Building through Installation

SYSTEMS

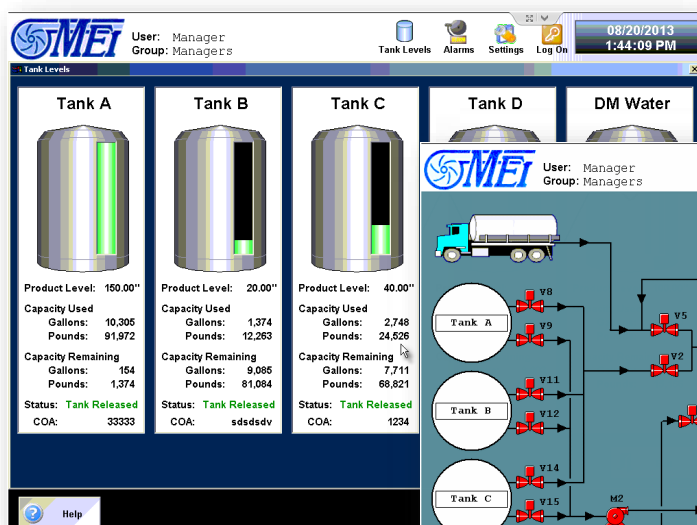
- Dry Systems Can Produce up to 50% Urea Concentrate
- Ratio Blending Units can Blend Up to 70% Urea Concentration to a Target Percentage
- Expandable System Capabilities for Increased Production Volumes
- Systems, if Needed, Can Re-Blend, Back Flush, and Recirculate

EQUIPMENT

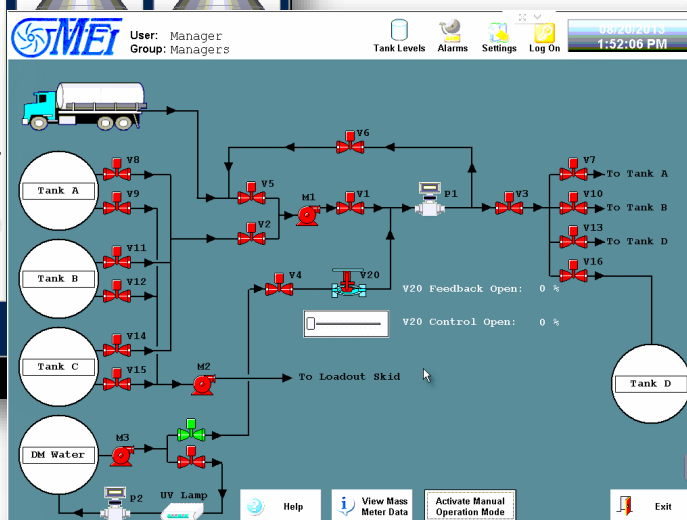
- ISO 22241 Compliant Material
- Top-of-Line Equipment: Unequaled Maintenance Savings and Long Equipment Life
- Equipment is Made in the USA
- Fully Pre-assembled and Tested to Meet the Highest Industry Standard

AUTOMATION

- Manual or Fully-Automated Facility Operation
- Remote System Access and Monitoring Available
- Traceability for Proper Handling and Manufacturing
- Patented Blending Technology Allows Pin-Point Targeted Accuracy, Blending to Target Percentages without Re-Blending for Speed and Efficiency (Patent US 7,445,704 B2)
- Complete Automation is User-Friendly, Lowering Required Man-Hours and Eliminating Possible Human Errors During Blending



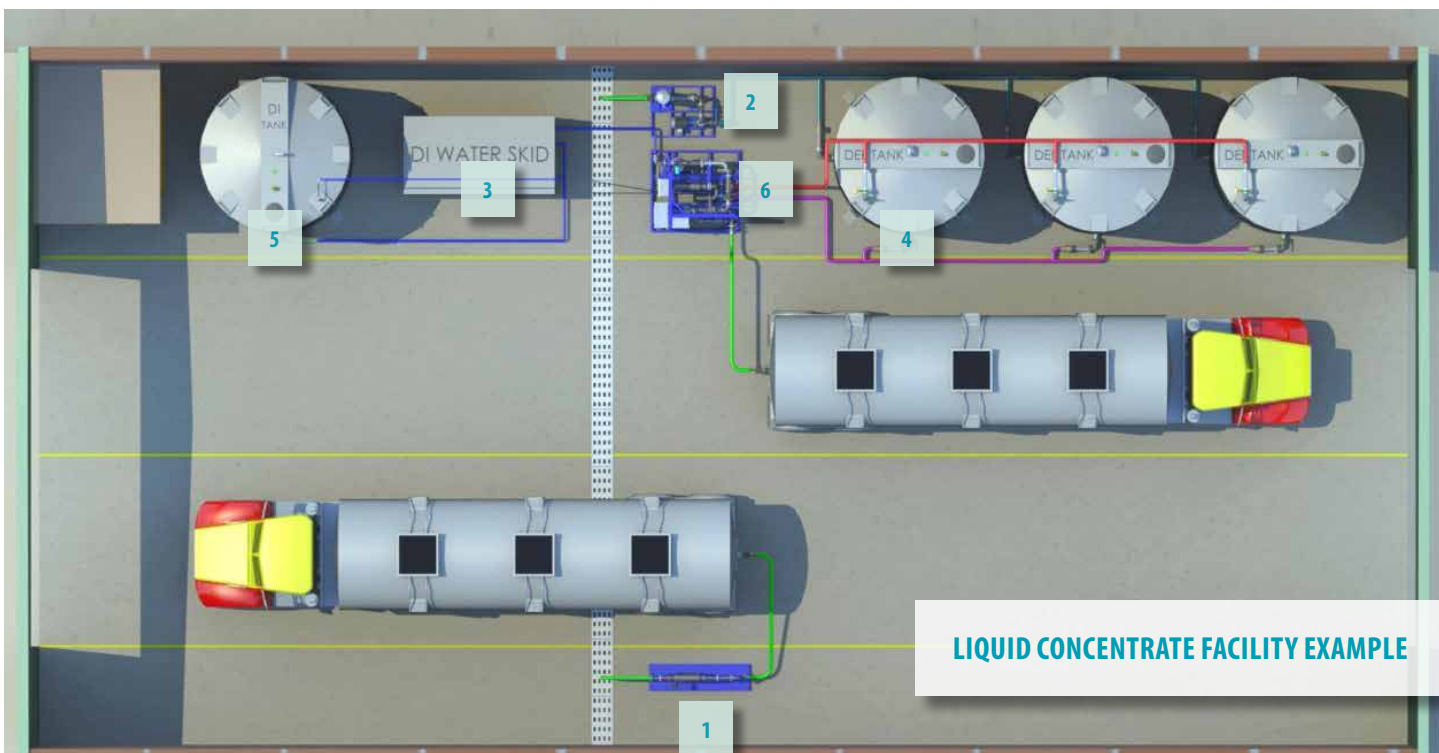
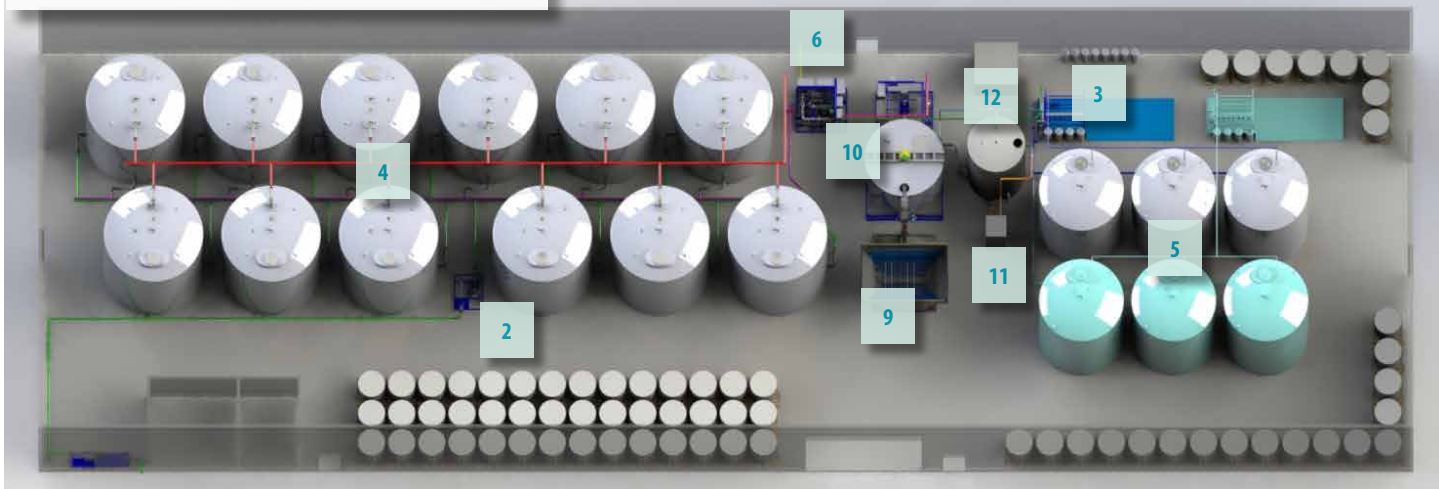
8



7

CALL FOR A PERSONALIZED QUOTE

DRY MANUFACTURING FACILITY EXAMPLE



LIQUID CONCENTRATE FACILITY EXAMPLE

FACILITY EQUIPMENT PROVIDED

1. 250 GPM Weights and Measures Loadout Skid with 24/7 Unattended Loadout with Home Office Transaction Communication
2. Transfer Pump & Filter Skid
3. DI/RO Water Treatment Unit
4. Finished Product Storage Tanks & Fitting Packages
5. DI Water Storage Tanks & Fitting Packages
6. Two Styles of Concentrate blending Mass Flow or Volumetric Blending up to 250 GPM.
7. Automation Software with PLC Touch-Screen Computer in a UL Listed NEMA-4 Enclosure (See Pg. 33)
8. Real-Time Tank Level Monitoring (See Pg. 33)
9. Dry Handling Systems
10. Batch Mix Tanks 2,000 – 12,000 Gallon Capacity with High Accuracy Weigh Scales
11. One or Two Million BTU Water Heaters
12. DI Hot Water Process Storage Tank, Facility Valves and Piping



**KLEERBLUE
ACCESSORIES**

Bottom Fill Loadout Arms



Made in U.S.A.

IMPROVED SAFETY Since the operator remains on the ground during loading, these boom-type loadout systems greatly increase facility safety and reduce the chance of product spills.

QUICK CONNECTIONS Reduce overall loading time and manage with a single operator

FLEXIBLE Two swivel planes of rotation offer complete flexibility in making tight connections for loading tank trucks.

CONSTRUCTION SPECIFICATIONS

- All Heavy-Duty Stainless Steel
- Complete Support Stand Included
- Boom-Type Bottom Loadout System
- Two Swivel Planes of Rotation
- 15' Total Arm Extension
- Flexible Connecting Camlock Section is 4' from Ground Level
- 6' of 3" Flexible Hose with Valve & Camlock Final 6' of Loadout Arm
- Option: Heating & Insulation

PART NUMBER	DESCRIPTION	DIMENSIONS	LIST PRICE	QTY	TOTAL PRICE
SBD 3"LOADARM	3" Bottom Fill Loadout Arm	4' tall x 15' Total Arm Extension	Call		
SBD 3"LOADARMH	3" Bottom Fill Loadout Arm with Heating and Insulation	4' tall x 15' Total Arm Extension	Call		

PART NUMBER	DESCRIPTION	LIST PRICE	QTY	TOTAL PRICE
TOTAL				

Cloud-Enabled Unattended Loadout

AFFORDABLE & COMPACT The TCS 3000 Electronic Register and Flow Computer can turn any system with a compatible meter into an unattended loadout.

CLOUD-BASED Review, report, and retrieve delivery data anywhere with an Internet connection via the TCS HUB.

CONFIGURABLE Use the TCS 3000 internal database to store customer ids and other configurable information to validate deliveries. Display and ticket information is also readily configurable.



Made in U.S.A.



TCS 3000 HIGHLIGHTS

- Rugged, Compact Design
- Large 7" Back-Lit Display
- Alpha-Numeric Touch Pad
- Controls the Pump, Electric, and Air Actuated Valves
- Internal Database & Security
- Displays Volume & Flow Rate from Meter
- Delivery Preset Available
- Interfaces with a Ticket Printer and/or TCS HUB

TCS HUB HIGHLIGHTS

- Store, Report, and Export Data from the TCS 3000 & Auxillary Devices in the cloud
- Export Data into 3rd Party Software
- Access Anywhere with an Internet Connection

PART NUMBER	DESCRIPTION	DIMENSIONS	LIST PRICE	QTY	TOTAL PRICE
TCS 3000			Call		
TCS HUB			Call		

PART NUMBER	DESCRIPTION	LIST PRICE	QTY	TOTAL PRICE
			TOTAL	



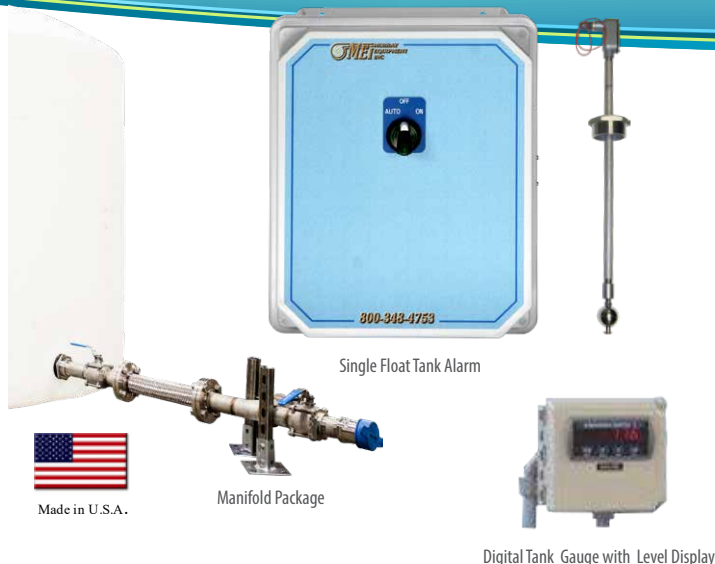
Example loadout skid using the TCS 3000 as the unattended loadout flow computer, along with an NTEP approved MAG meter and high flow/low flow valves.

Bulk Tank Add-Ons

PREVENT OVERFILLING TANKS With the High Level Alarm and Digital Level Tank Gauge, keep an eye on tank volume and prevent costly overfills.

KEEP TRACK OF INVENTORY With the Digital Tank Gauge you can visually see where tank volumes are within +/- 25%. Know when you need to reorder.

MANIFOLD TANKS TOGETHER Does it make more sense at your facility to store DEF in multiple tanks rather than a single large tank? The Manifold kit includes the parts needed for two tanks to be connected together.



HIGH LEVEL ALARM SPECIFICATIONS

- Configurable Multi-Tone (8 tones at 73-85dB)
- Strobe Signal
- Can Disconnect Pump Power
- Adjustable Float

DIGITAL LEVEL GAUGE SPECIFICATIONS

- Visual Display
- For Tanks up to 20' High

TANK MANIFOLD SPECIFICATIONS

- 3" x 2" Stainless Steel Bottom Tank Outlet
- 2" Stainless Steel Flanged Lockable Tank Valve
- Stainless Steel Flanged Weld Manifold
- Support Channel and Base
- Stainless Steel Flow Direction Control Valves
- Flanged Stainless Steel Flex Connector
- Tank Vent

PART NUMBER	DESCRIPTION	LIST PRICE	QTY	TOTAL PRICE
ICS HIALARM1D	Single Float Tank Alarm	Call		
SBD TG-RT1-10	Digital Tank Gauge with Level Display for up to 10' tall tanks	Call		
SBD TG-RT11-20	Digital Tank Gauge with Level Display for 11'-20' tall tanks	Call		
SBD TG1032CBS	Remote Fill Level Box with High/Low Alarm	Call		

PART NUMBER	DESCRIPTION	LIST PRICE	QTY	TOTAL PRICE
TOTAL				

Multi-Cartridge Filters

COST EFFECTIVE & PREMIUM RESULTS Delivers maximum durability and corrosion resistance.

DEF COMPATIBLE All 304 stainless steel with special thick-gauge construction

EASY TO MAINTAIN V-Clamp design allows for quick cartridge exchange to ensure high-quality filtration.



Made in U.S.A.



SPECIFICATIONS

- 20" or 30" Sizes
- Require Between 5 (56 GPM) and 12 (250 GPM) Cartridges
- Stainless Steel
- Flanged or Optional NPT Connection
- V-Band Clamp and Swing-Bolt Closures for Quick Cartridge Change-Outs
- EPDM Cover Gasket
- Mounting Legs
- 1/4" Gauge Ports

PART NUMBER	DESCRIPTION	DIMENSIONS	LIST PRICE	QTY	TOTAL PRICE
SBD SSC7FOS215	1 1/2" Flanged 20" 5-Cartridge Filter (56 GPM)	12" diameter x 35" tall	Call		
SBD SSC7FOS22F	2" Flanged 20" 7-Cartridge Filter (98 GPM)	14" diameter x 35" tall	Call		
SBD SSC-FILTER	2" Flanged 30" 7-Cartridge Filter (150 GPM)	14" diameter x 35" tall	Call		
SBD SSCFFIL250	3" Flanged 30" 12-Cartridge Filter (250 GPM)	17" diameter x 54" tall	Call		

PART NUMBER	DESCRIPTION	LIST PRICE	QTY	TOTAL PRICE
SBD SSC10MICRN	10-Micron Absolute Cartridge for 20" Filters	Call		
SBD SSC1MIC20	1-Micron Absolute Cartridge for 20" Filters	Call		
SBD SSC1MICRON	1-Micron Absolute Cartridge for 30" Filters	Call		
TOTAL				



KLEERBLUE FITTINGS

Valves



PART NUMBER	DESCRIPTION	LIST PRICE	QTY	TOTAL PRICE
SBD V3/4	3/4" FNPT 316 Stainless Steel Full Port Ball Valve with Locking Handle	Call		
SBD V1	1" FNPT 316 Stainless Steel Full Port Ball Valve with Locking Handle	Call		
SBD V11/2	1 1/2" FNPT 316 Stainless Steel Full Port Ball Valve with Locking Handle	Call		
SBD V2	2" FNPT 316 Stainless Steel Full Port Ball Valve with Locking Handle	Call		
SBD V3	3" FNPT 316 Stainless Steel Full Port Ball Valve with Locking Handle	Call		
SBD VF2	2" Flanged 316 Stainless Steel Full Port Ball Valve with Locking Handle	Call		
SBD VF3	3" Flanged 316 Stainless Steel Full Port Ball Valve with Locking Handle	Call		
SBD VB150	1 1/2" FNPT Polypropylene Full Port Ball Valve	Call		
SBD VB200FP	2" FNPT Polypropylene Full Port Ball Valve	Call		
SBD VBVA150	1 1/2" FNPT Polypropylene Full Port Nozzle Valve with 90° Nozzle Outlet and Tube	Call		
TOTAL				

Drybreaks & Couplers



PART NUMBER	DESCRIPTION	LIST PRICE	QTY	TOTAL PRICE
SBD OPW1672-2	OPW 1672 2" Stainless Steel Male Camlock Adapter	Call		
SBD OPW1772-2	OPW 1772 2" Stainless Steel Female Camlock Coupler	Call		
SBD TODOPCPL	TODO Dust Plug for Coupler	Call		
SBD TODO2CPL	TODO Drybreak Stainless Steel 2" Coupler	Call		
SBD TODO2M-NIP	TODO Drybreak Stainless Steel 2" Adapter	Call		
SBD DB200SS-A	2" Male Compatible Drybreak for TODO Style	Call		
SBD DB200SS-C	2" Coupler Compatible Drybreak for TODO Style	Call		
PHC 2SSCOUPLER	Parker Drybreak Stainless Steel 2" Female Coupler	Call		
PHC 2SSNIP-NPT	Parker Drybreak Stainless Steel 2" Male NPT Adapter	Call		
PHC 2SSNIP-DC	Parker Drybreak Stainless Steel 2" Adapter Dust Cap	Call		
PHC 2SSNIP-BUT	Parker Drybreak Stainless Steel 2" Male Buttress Adapter	Call		
CAM F-SS-200	2" Stainless Steel Male NPT to Male Camlock	Call		
TOTAL				

Micro Matic Closed System Packaging Components



PART NUMBER	DESCRIPTION	LIST PRICE	QTY	TOTAL PRICE
MMG 743-097	4-Pin RSV 2.5" x 5 Buttress Thread Container Stainless Steel Extractor Valve. EPDM Seals	Call		
MMG 743-016	4-Pin RSV 2" BSP Thread Container Stainless Steel Extractor Valve. Viton Seals	Call		
MMG 2682	4-Pin RPV 2" Buttress Extractor Valve. Polypropylene/EPDM Seals	Call		
MMG 7432361065	RSV Down Tube Assembly for Center Mount 275 Gallon Tote/IBC with Bellows on Top	Call		
MMG 7432361245	RSV Down Tube Assembly for Center Mount 330 Gallon Tote/IBC with Bellows on Top	Call		
MMG 743203975	RSV Down Tube Assembly for Top Edge Mount 275 Gallon Tote/IBC with Bellows on Bottom	Call		
MMG 7432031155	RSV Down Tube Assembly for Top Edge Mount 330 Gallon Tote/IBC with Bellows on Bottom	Call		
MMG 743203810	RSV Down Tube Assembly for 55 Gallon Drum with Bellows on Bottom	Call		
MMG 744-026	RSV Vapor Recovery Stainless Steel Fill Head Coupler for Filling Containers Through RSV	Call		
MMG 744-048	RSV Basic Stainless Steel Dispense Coupler. Horizontal with 3/4" Barbed Outlet	Call		
MMG 749-326	Blue 6" 275/330 Gallon Tote Cap/Lid with one 2 1/2" x 5" Buttress Opening	Call		
MMG 741-084	RSV Extractor Valve Install/Removal Tool (For Use By Installers Only)	Call		
MMG 102-081	RSV Red Shipping Cap for Extractor Valves	Call		
CE-Z11-618	Wire Tie Tamper Evident Seal 18" 1/16 wire.	Call		
MMG 5792	6" Dual Bung Tote Lid with Two 2" Buttress Openings	Call		
TOTAL				

304 Stainless Steel Threaded NPT Pipe Fittings



PART NUMBER	DESCRIPTION	LIST PRICE	QTY	TOTAL PRICE
S4L 3/4	3/4" 90° Elbow	Call		
S4L 1	1" 90° Elbow	Call		
S4L 1 1/2	1 1/2" 90° Elbow	Call		
S4L 2	2" 90° Elbow	Call		
S4L 3	3" 90° Elbow	Call		
S4L 3/4X45	3/4" 45° Elbow	Call		
S4L 1X45	1" 45° Elbow	Call		
S4L 1 1/2X45	1 1/2" 45° Elbow	Call		
S4L 2X45	2" 45° Elbow	Call		
S4L 3X45	3" 45° Elbow	Call		
S4L S3/4	3/4" 90° Street Elbow	Call		
S4L S1	1" 90° Street Elbow	Call		
S4L S1 1/2	1 1/2" 90° Street Elbow	Call		
S4L S2	2" 90° Street Elbow	Call		
S4L S3	3" 90° Street Elbow	Call		
S4T 3/4	3/4" Tee	Call		
S4T 1	1" Tee	Call		
S4T 1 1/2	1 1/2" Tee	Call		
S4T 2	2" Tee	Call		
S4T 3	3" Tee	Call		
S4C 3/4	3/4" Coupling	Call		
S4C 1	1" Coupling	Call		
S4C 1 1/2	1 1/2" Coupling	Call		
S4C 2	2" Coupling	Call		
S4C 3	3" Coupling	Call		
S4P 3/4	3/4" Plug	Call		
S4P 1	1" Plug	Call		
S4P 1 1/2	1 1/2" Plug	Call		
S4P 2	2" Plug	Call		
S4P 3	3" Plug	Call		
S4C AP3/4	3/4" Cap	Call		
S4C AP1	1" Cap	Call		
S4C AP1 1/2	1 1/2" Cap	Call		
S4C AP2	2" Cap	Call		
S4C AP3	3" Cap	Call		
S4F 1 1/2	1 1/2" Flange	Call		
S4F 2	2" Flange	Call		
S4F 3	3" Flange	Call		
TOTAL				

SEE NEXT PAGE FOR BUSHINGS AND NIPPLES.
OTHER SIZES & STYLES OF FITTINGS ARE AVAILABLE.

304 Stainless Steel Threaded NPT Pipe Fittings Cont.



PART NUMBER	DESCRIPTION	LIST PRICE	QTY	TOTAL PRICE
S4B 1X3/4	1" x 3/4" Bushing	Call		
S4B 1 1/2X3/4	1 1/2" x 3/4" Bushing	Call		
S4B 1 1/2X1	1 1/2" x 1" Bushing	Call		
S4B 2X1	2" x 1" Bushing	Call		
S4B 2X1 1/2	2" x 1 1/2" Bushing	Call		
S4B 3X1 1/2	3" x 1 1/2" Bushing	Call		
S4B 3X2	3" x 2" Bushing	Call		
S4N 3/4XCL	3/4" x Close Nipple	Call		
S4N 3/4X2	3/4" x 2" Nipple	Call		
S4N 3/4X3	3/4" x 3" Nipple	Call		
S4N 3/4X4	3/4" x 4" Nipple	Call		
S4N 3/4X6	3/4" x 6" Nipple	Call		
S4N 1XCL	1" x Close Nipple	Call		
S4N 1X2	1" x 2" Nipple	Call		
S4N 1X3	1" x 3" Nipple	Call		
S4N 1X4	1" x 4" Nipple	Call		
S4N 1X6	1" x 6" Nipple	Call		
S4N 1 1/2XCL	1 1/2" x Close Nipple	Call		
S4N 1 1/2X3	1 1/2" x 3" Nipple	Call		
S4N 1 1/2X4	1 1/2" x 4" Nipple	Call		
S4N 1 1/2X6	1 1/2" x 6" Nipple	Call		
S4N 2XCL	2" x Close Nipple	Call		
S4N 2X3	2" x 3" Nipple	Call		
S4N 2X4	2" x 4" Nipple	Call		
S4N 2X6	2" x 6" Nipple	Call		
S4N 3XCL	3" x Close Nipple	Call		
S4N 3X3	3" x 3" Nipple	Call		
S4N 3X4	3" x 4" Nipple	Call		
S4N 3X6	3" x 6" Nipple	Call		
TOTAL				

Thread Sealant



PART NUMBER	DESCRIPTION	LIST PRICE	QTY	TOTAL PRICE
SBD DEF SEALANT	Liquid Thread Sealant for DEF. 1.6 oz Tube.	Call		
SBD DEF-PRIMER	Liquid Thread Primer. .88 oz. Required on Stainless Steel and Polypropylene Threads	Call		
TOTAL				



KLEERBLUE APPENDICES

Tip-To-Vertical Bulk Tank Requirements

PG. 6 BULK TANKS

PART NUMBER	CAPACITY	DIMENSIONS	TIP-TO-VERTICAL HEIGHT REQUIREMENT
SBD 3000SWD	3,000 Gallons	102" d x 96" h	140"
SBD 6000SWD	6,000 Gallons	102" d x 188" h	214"
SBD 6500SWD	6,500 Gallons	120" d x 153" h	195"
SBD 8750SWD	8,750 Gallons	142" d x 146" h	204"
SBD 10500SWD	10,500 Gallons	142" d x 169" h	221"
SBD 12500SWD	12,500 Gallons	142" d x 198" h	244"
SBD 15000SWD	15,000 Gallons	142" d x 234" h	274"

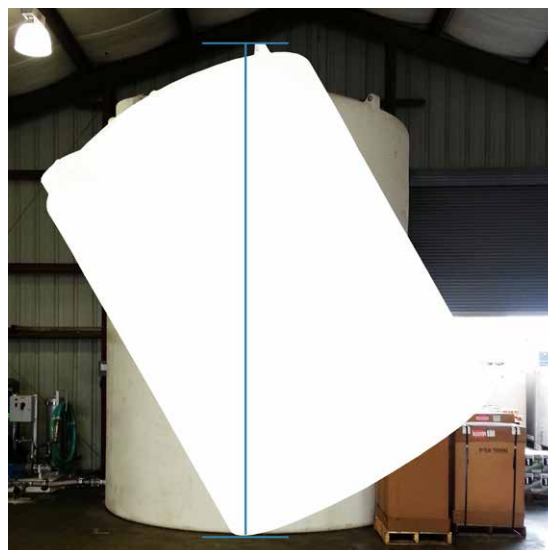
PG. 7 BULK TANKS

PART NUMBER	CAPACITY	DIMENSIONS	TIP-TO-VERTICAL HEIGHT REQUIREMENT
KBS S3000SWD	3,000 Gal	102" d x 96" h	140"
KBS S3000SWD90	3,000 Gal	90" d x 127" h	156"
KBS S6000SWD10	6,000 Gal	102" d x 188" h	214"
KBS S6000SWD	6,000 Gal	120" d x 132" h	179"
KBS S6900SWD	6,900 Gal	120" d x 153" h	195"
KBS S8900SWD	8,900 Gal	120" d x 194" h	229"
KBS S10500SWD	10,500 Gal	142" d x 169" h	221"
KBS S12500SWD	12,500 Gal	142" d x 198" h	244"
KBS S15000SWD	15,000 Gal	142" d x 234" h	274"

PART NUMBER	CAPACITY	DIMENSIONS	TIP-TO-VERTICAL HEIGHT REQUIREMENT
KBS N3000SWD95	3,000 Gal	95" d x 109" h	145"
KBS N5000SWD	5,000 Gal	102" d x 152" h	183"
KBS N6500SWD	6,500 Gal	119" d x 150" h	192"
KBS N7800SWD	7,800 Gal	119" d x 176" h	213"
KBS N10000SWD	10,000 Gal	141" d x 160" h	214"
KBS N12000SWD	12,000 Gal	141" d x 193" h	239"
KBS N15000SWD	15,000 Gal	165" d x 186" h	248"

When installing tanks indoors, clearance must be at least the Tip-To-Vertical height. Otherwise, when tanks are tipped into place, they will not fit.

NOTE: Dimensions of tanks may vary +/- 3% due to standard rotational molding tolerances.



Terms and Conditions

All products are sold and all quotations are subject to the following terms and conditions:

1. Buyer's order is accepted on the condition that the following terms and conditions, or any special attachments, shall apply and shall constitute the entire agreement between the parties. The terms and conditions may not be varied, and no modification or addition to them shall be of any force or effect, unless made by or specifically accepted by Separation by Design, Murray Equipment, Inc. DBA KleerBlue "KleerBlue" in writing. Acceptance of Buyer's orders, which contain additional or different conditions of purchase printed on the order form, shall not be binding upon KleerBlue unless specifically agreed to in writing by an authorized representative of KleerBlue (if any conflict exists between the terms and conditions as set forth herein, and those terms and conditions as contained on Buyer's order form, these terms and conditions shall supersede and govern.)
2. All quotations or agreements are contingent upon strikes, lockout, work-stoppages, war riot, availability of materials, fire, accident or any other cause beyond KleerBlue's control. KleerBlue shall have no liability for any delay, failure to deliver, loss or damage, or any consequential damages arising therefrom.
3. Time for delivery shall not be of the essence of the agreement. KleerBlue will make its best efforts to meet the stated shipment or delivery dates, but it shall not be liable for any loss or damages, including consequential damages, resulting from any delay.
4. All orders are subject to a minimum net invoice billing of \$5.00 exclusive of no-product charges such as postage, freight or taxes, etc., unless stated to the contrary on the face of this agreement. Payment terms are 2% 10 days net 30 days after due date will accrue interest at the rate of 1 and, 12 percent per month, 18 percent per year.
5. Invoices are billed at prices in effect at time of shipment. Prices and discounts are subject to change without notice.
6. Title and risk of loss or damage to the equipment shall pass to the purchaser upon tender or delivery F.O.B. manufacturing facility unless otherwise agreed upon by the parties.
7. Typographical or mathematical errors made by KleerBlue in quotations, acknowledgments or invoices are subject to correction. To be allowable, any claim of error in quantity shipped shall be made by the Buyer in writing, within 10 days after receipt of the goods.
8. No goods may be returned without KleerBlue's written permission. If authorized for return, transportation charges must be prepaid by Buyer unless otherwise agreed to by KleerBlue in writing in the authorization to return goods. All goods authorized for return are subject to inspection and acceptance. A handling charge equal to 15 percent of the purchase of the goods will be assessed on items not returned within 90 days, unless waived by KleerBlue, in writing, in the authorization to return goods. No credits are issued without the original invoice number.
9. No cancellation, suspension or variation of an order accepted by KleerBlue shall be valid unless agreed to by KleerBlue in writing. KleerBlue reserves the right to assess cancellation or other charges to indemnify against all loss, including the profit on any part of an order that is canceled.
10. Buyer agrees to, and does, indemnify and hold harmless KleerBlue against any and all loss or liability either direct or indirect, including reasonable attorney fees for or on account of any claims, demands or suits for any actual or alleged infringement of any letters, patents, copyrights or trademarks, either domestic or foreign arising from the manufacture or sale of goods in accordance with patterns, designs, specifications, drawings, directions, technical information or data furnished to KleerBlue by Buyer.
11. All quotations and all of the terms and conditions set forth above, and any agreement or sale arising between Buyer and KleerBlue shall be governed and construed in accordance with the laws of the State of Indiana. Exclusive jurisdiction and venue for any and all claims arising out of any quotation or sale between Buyer and KleerBlue shall be in the courts located in Allen County, Indiana.
12. Under no circumstances shall KleerBlue be liable for indirect, consequential, incidental or special damages, including but not limited to, loss of profit, loss of product, or any cleanup costs associated with loss of product.
13. KleerBlue certifies that the products furnished pursuant to this agreement have been or will be produced in compliance with the Fair Labor Standards Act as amended and regulations and orders of the United States Department of Labor. KleerBlue agrees that this statement may be considered as the written assurance contemplated by said Act.
14. Unless otherwise expressly provided, KleerBlue shall retain title to and possession of any models, patterns, dyes, molds, jigs, fixtures, and tools made for or obtained for the furnishing of this order.
15. Buyer's acceptance of any order based on this agreement shall evidence the acceptance by the Buyer of the terms and conditions on the face and reverse side of this agreement. By accepting the goods, Buyer agrees to be bound by these terms and conditions, notwithstanding any adverse or conflicting terms or conditions on Buyer's purchase order. Any exceptions or changes must be in writing and signed by an authorized representative of KleerBlue.

Questions? Need a Quote? Contact Us Today!

(800) 320-2122 or Sales@KleerBlue.com



KleeBlue™

DEF Storage & Dispensing Systems

1601 Buchanan Road
Evansville, IN 47720

www.KleerBlueSolutions.com
(800) 320-2122

Accu-Flo
1-800-921-2228
www.accuflo.com