

RED JACKET[®]

Accu-Flo
Meter Service Ltd.

www.accuflo.com
1-800-921-ACCU

MAXXUM

BIG-FLO[™]

**6" Submersible Pumps
INSTALLATION, OPERATION,
SERVICE & REPAIR PARTS**

MAXXUM BIG FLO SUBMERSIBLE PUMP MANUAL: INSTALLATION AND OPERATION

Part No. 051-301-1 Rev. C

First Printing Printed in USA

97 98 99 00 01 5 4 3 2 1

CERTIFICATIONS AND LISTINGS

The Marley Pump Company is ISO 9001 certified. Red Jacket's magnetic contactors with enclosures, part numbers 279-328-5, 279-329-5 and magnetic starter with enclosures, part numbers 279-327-5, 279-230-5 have been evaluated by Underwriters Laboratories under Furnas Electric Co. file no. E14900 and Canadian Standards Association under Furnas Electric Co. File No. LR6535C.



This symbol on the product's nameplate
means it is listed by
Underwriters Laboratories



This symbol on the product's nameplate
means it is listed by
The Canadian Standards Association

TRADEMARKS

The logos for Red Jacket and Marley Pump are property of The Marley Pump Company. Extracta is a registered trademark of The Marley Pump Company. The UL logo is property of Underwriters Laboratories Inc. The CSA logo is property of the Canadian Standards Association. Other trademarks used in this manual include GFLT, Scotch-Cast, and Viton.



Marley Pump
A United Dominion Company

© 1997, Marley Pump Company, a United Dominion company. The information in this manual is proprietary and intended only for distributors, installers, and owners of Red Jacket equipment. Any other use of this manual in part or in whole must be authorized in writing. The Marley Pump Company reserves the right to make design improvements and pricing modifications as necessary and without notice. Marley Pump is not responsible for the operation of equipment from other manufacturers when used in conjunction with Red Jacket petroleum equipment.

TABLE OF CONTENTS

Table of Figures & Tables	ii
About This Manual	iii
Abbreviations and Symbols	iv
CHAPTER 1: INSTALLATION	1
Installing the Pumping Unit	3
Attaching the Expansion Relief Vent Line	4
Wiring the Conduit Box	5
Wiring Instructions - 208-230 volt Single Phase Pumps	6
Wiring Instructions - 208-230, 400 or 575 Volt Three Phase Pumps	7
Starting the Pump and Completing the Installation	8
Wiring Instructions to Retrofit an Existing Site	9
Installing a Big Flo Diaphragm Valve	15
Attaching the Siphon Line and Vacuum Line with Factory Installed Siphon Assemblies	16
Installing Two Pumps for Tandem Operation.....	17
CHAPTER 2: TESTING THE INSTALLATION	20
Testing Piping	20
Testing Tank.....	21
Purging the System.....	21
Adjusting the Line Relief Pressure	21
CHAPTER 3: SERVICE AND REPAIR	22
Removing the Extracta Assembly	22
Procedure for Removal of Plug-In Type Pump-Motor Assembly	23
Installing the Extracta Assembly	24
The Check Valve Assembly.....	26
Repairing the Check Valve Lock-Down Screw and Seals.....	27
CHAPTER 4: CONTROL BOXES	33
Motor Control Box for 2 HP Pumps, Model P200H1-CB	33
Magnetic Contactor for 2,3,4, & 5 HP 3 Phase Pumps	34
APPENDIX: PARTS LIST	29

TABLE OF FIGURES & TABLES

Table A: Recommended Minimum Bypass	2
Figure 1 Attaching Expansion Relief Vent Line	4
Figure 2 Wiring the Conduit Box	5
Figure 3 Typical Mechanical Dispenser Wiring Diagram, 1Ø, Two-Wire Control	9
Figure 4 Typical Mechanical Dispenser Motor control Box, Wiring Diagram, 2 HP	9
Figure 5 Wiring Diagram, Switched 'Hot' Feed, 208-230 Volts A.C., 2HP Single Phase Control Box	10
Figure 6 Wiring Diagram, Three-Phase, Two-Wire Control	10
Figure 7 Two-Wire, Three-Phase Motor Wiring Diagram	11
Figure 8 Three-Phase Motor Wiring Diagram	11
Figure 9 Three-Wire, Three-Phase Motor Wiring Diagram	11
Figure 10 Backfill and Manhole Dimensions	12
Table B: Backfill and Manhole Dimensions	13
Table C: Winding Resistances	13
Table D: Floating Suction Installation Information	14
Figure 11 Floating Suction Installation Diagram	14
Figure 12 Installing a Big Flo Diaphragm Valve	15
Figure 13 Attaching the Siphon Line and Vacuum Line with Factory Installed Siphon Assemblies	16
Figure 14 Installing Two Pumps for Tandem Installation	17
Figure 15 Wiring Diagram, Dual Manifold System, Two-Wire Control 208/230 Single Phase	18
Figure 16 Wiring Diagram, Dual Manifold System, Three-Wire, 208/230 Single Phase	18
Figure 17 Wiring Diagram, Dual Manifold System, Two-Wire control, Three-Phase	19
Figure 18 Wiring Diagram, Dual Manifold System, Three-Wire Control, Three Phase	19
Figure 19 Testing the Piping	20
Figure 20 Adjusting the Line Relief Pressure	21
Figure 21 Removing the Extracta Assembly	22
Table E: Pigtail and Seal Parts	23
Figure 22 Pump Repair Parts	25
Table F: Repair Parts List	25
Figure 23 Repairing the Check Valve Assembly	26
Figure 24 Repairing the Check Valve Lock-Down Screw and Seals	28

ABOUT THIS MANUAL

This preface describes the organization of this manual, explains symbols and typographical conventions used, and defines vital terminology. This manual is for personnel who install Red Jacket submersible pumps for petroleum. It contains the information required for working in the pit. It also contains a table of figures, a list of abbreviations, appendixes with the warranty and parts list, and an index.

ORGANIZATION

This manual is organized into four chapters:

Chapter 1: Installation provides safety notices and gives step-by-step instructions for installing and wiring the pump, tandem pumps and control boxes. It also describes how to adjust the Pressurstat™.

Chapter 2: Testing the installation describes testing the various components of the system after it has been installed.

Chapter 3: Service and Repair describes how to remove and replace a pump. Also Included, is information on repairing the Pressurstat™, check valve and lockdown screw.

Chapter 4: Control Boxes describes specific information on control boxes, magnetic starters and magnetic contactors.

TYPOGRAPHICAL CONVENTIONS

The various symbols and typographical conventions used in this manual are described here.

TERMINOLOGY

The following defined terms are used throughout this manual to bring attention to the presence of hazards of various risk levels, or to important information concerning use of the product.

DANGER

Indicates the presence of a hazard that will cause severe personal injury, death, or substantial property damage if ignored.

WARNING

Indicates the presence of a hazard that can cause severe personal injury, death, or substantial property damage if ignored.


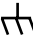
CAUTION

Indicates the presence of a hazard that will or can cause minor personal injury or property damage if ignored.

NOTICE

Indicates special instructions on installation, operation, or maintenance that are important but not related to personal injury hazards.

ABBREVIATIONS AND SYMBOLS

	Chassis ground (see also GND)
	Earth ground
Ω	Ohm, resistance
μF	Microfarad (10^{-6} farad)
AG	Alcohol-gasoline blends
C	Centigrade
EPA	Environmental Protection Agency
F	Fahrenheit
ft-lb	Foot-pound
GND	Ground
gph; gpm	Gallons per hour; Gallons per minute
hp	Horsepower
Hz	Hertz
ISO	International Organization for Standardization
kPa	KiloPascals
mm	Millimeter
N•m	Newton-meter
NEC	National Electrical Code
NFPA	National Fire Protection Association
NPT	National Pipe Thread
PH	Phase
psi; psig	Pounds per square inch; Pounds per square inch gauge
SG	Specific Gravity
SSU	Saybolt Seconds Universal, a measure of viscosity
UL	Underwriters Laboratories Inc.
UMP	Unit motor pump; Pump-motor assembly
VAC	Voltage—alternating current
V	Volt
VDC	Voltage—direct current

CHAPTER 1: INSTALLATION

NOTICE

This pumping system requires the following elements:

1. Discharge Manifold Assembly - Installed below grade (NEC/Class I, Group D, Division I area)
2. Motor-Pump Unit Assembly - Installed below grade (NEC/Class I, Group D, Division I area)
3. Control Box/Magnetic Starter

An “all inclusive” name plate will be found attached to the Extracta Head and can be inspected by removing the manhole cover directly over the pump. An additional name plate will be found on the control box.

NOTICE

It is important to give the model number and serial number of this pump when corresponding with the factory for any reason.

INSTALLATION SAFETY NOTICES

ATTENTION INSTALLER: Read This Important Safety Information Before Beginning Work.

DANGER

Portions of this product are to be installed and operated in the highly combustible environment of a gasoline storage tank. It is essential that you carefully read and follow the warnings and instructions in this manual to protect yourself and others from hazards which will result in serious personal injury, death or severe property damage.

WARNING

Failure to follow all instructions in proper order can cause personal injury or death. Read all instructions before installing. All installation work must comply with local code requirements. If no other codes apply, the latest issue of the National Electrical Code should be followed.

Installation of Red Jacket petroleum equipment should be performed only by personnel who are trained and qualified to do so.

1. Units should be installed with manholes, or with discharge manifold casting above grade, to allow for ease in servicing.

WARNING

Red Jacket line leak detection systems do not function if the submersible pump runs continuously. Running a pump continuously will cause line leak detection systems to not function which results in a hazard that can cause severe personal injury, death or property damage.

2. Never wire a submersible pump to run continuously at less than minimum flow rate. The units are designed to operate continuously at or above minimum flow rate, or with an intermittent duty cycle, not to exceed 20 on/off cycles per hour. Should it be necessary to operate a unit continuously or when the demand is at a rate less than required per the information below, a bypass pipe should be installed in the piping to allow for continual product recirculation back into the storage tank. Regulation of the bypass flow back to the tank can be accomplished by correct sizing of the bypass line or use of a gate valve. The recommended minimum bypass per unit is:

Table A

60 Hz 208-240, 575 VOLT TWO STAGE UNITS	50 Hz, 380-415 VOLT, THREE STAGE UNITS
P200J1-2MB=15 GPM	P300J17-3HB=20 GPM
P200J4-2MB=15 GPM	P500J17-3K=25 GPM
P300J4-2HB=20 GPM	P300J16-3HB=20 GPM
P500J4-2K=25 GPM	P500J16-3K=25 GPM
P500J6-2K=25 GPM	

3. Red Jacket submersibles are not designed to handle abrasives or foreign particles in the product being pumped.

4. Product temperature must never exceed 105°F (41°C) as the submersible motors are equipped with thermal overload protection. Product temperature higher than 105°F (41°C) may result in tripping of the thermal overload protector.

5. Pumping water will overload the motor and damage the motor bearings.

6. These units are designed for use in Class I, Group D atmospheres.

7. Install pumping system in accordance to applicable codes.

WARNING

Proper motor protection must be used on three phase pump models, or motor warranty is void. To maintain warranty, the magnetic starters used must be supplied by Red Jacket, or have equivalent protection features defined as follows: 3 leg protection, properly sized quick trip heaters, and ambient temperature compensated overloads.

FOLLOW THESE DIRECTIONS CAREFULLY

NOTICE

Check these points before installing.

1. The power supply against the equipment voltage rating. For 3 phase units, request the power company identify and tag the service wires for L-1, L-2, L-3 phase sequence.
2. Be certain that the pump with the siphon valve is installed into the correct tank.
3. Check the equipment which was received against the table on Figure 16 for the tank diameter and bury depth.

CAUTION

BEFORE INSTALLING PIPE THREADS APPLY AN ADEQUATE AMOUNT OF FRESH, UL CLASSIFIED FOR PETROLEUM, NON-SETTING THREAD SEALANT

4. Apply thread sealant to the six inch riser/flange male threads. Thread it into the tank port. Tighten the riser/flange until the joint is water tight.

INSTALLING THE PUMPING UNIT. REFERENCE FIGURE 1

1. Apply a gasket compound to the bottom surface of the manifold and press the gasket onto the manifold's mating surface so the holes in the gasket and manifold align.
2. Coat the exposed surface of the gasket with gasket compound.
3. Lower the pumping unit into position utilizing the lifting eyes. Do not allow the gasket to contact the riser flange until the bolt holes in the flange are aligned with those in the manifold and the discharge port is aimed in the desired direction.
4. Insert three 3/4 inch bolts, provided, and torque them to 200 ft lb (271 N•m).

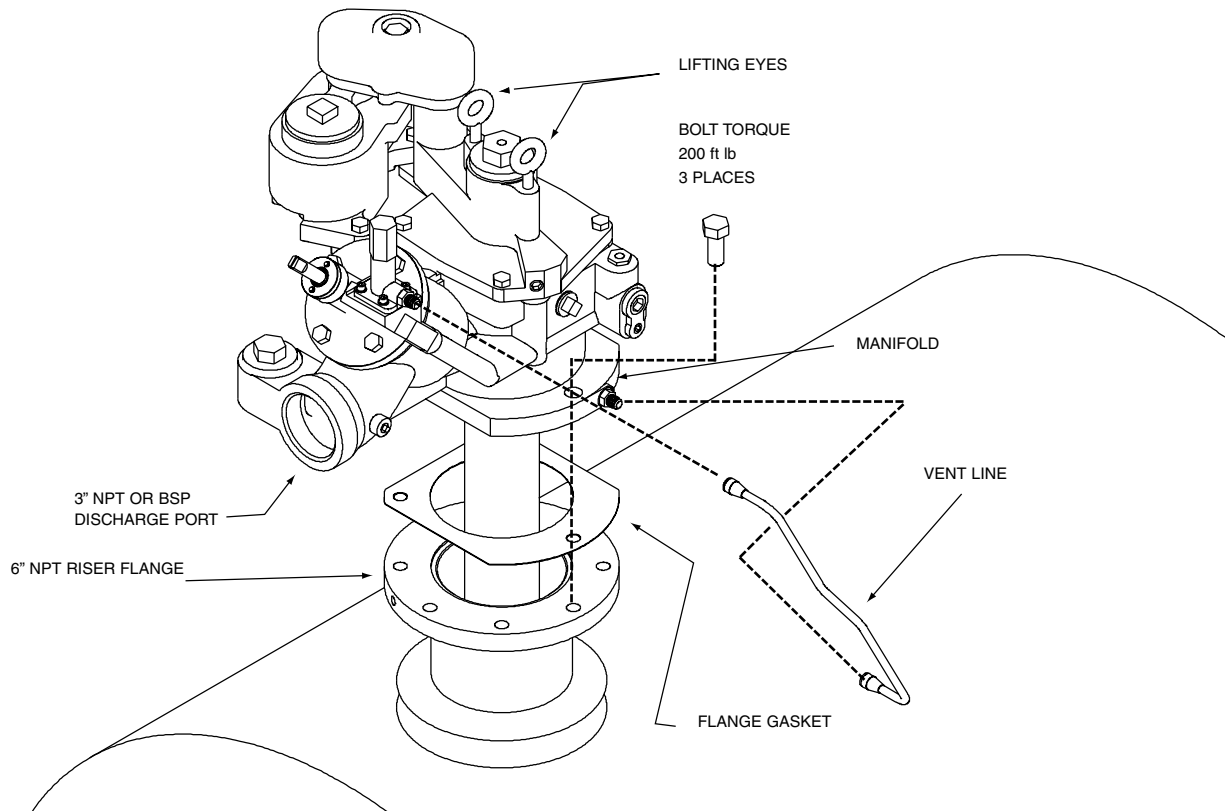


FIGURE 1

ATTACHING THE EXPANSION RELIEF VENT LINE. REFERENCE FIGURE 1.

1. Remove the metal protective shipping caps from the flare fittings.
2. Attach the vent line taking care not to cross thread the fittings.
3. Tighten the fittings 1/6 to 1/4 turn beyond hand tight.

CAUTION

Before installing pipe threads apply an adequate amount of fresh, UL classified for petroleum, nonsetting thread sealant.

4. Install the piping to the manifold discharge port. Pipe sealant should be used in this joint.

NOTICE

Installation of a ball valve is recommended on the discharge side of the pump or discharge of the “Big Flo” leak detector housing if used. This will aid in troubleshooting and line testing.

Line check-valves are not required since the pump has a built in check-valve. However, whenever two pumps are manifolded together to the same discharge piping, check valves with expansion relief are required and should be installed in the discharge piping of each pump, as close to the pump manifold as possible. See instructions “INSTALLING TWO PUMPS FOR TANDEM OPERATION” and Figure 14.

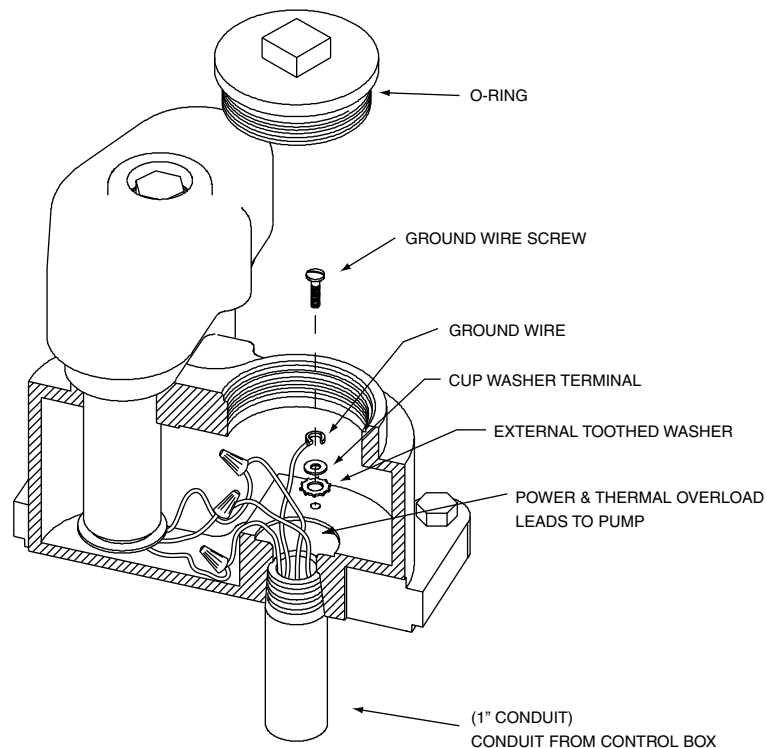


FIGURE 2

WIRING THE CONDUIT BOX. REFERENCE FIGURE 2.

DANGER

Always disconnect and lock out or tag out the power before starting to service the pump.

1. Connect the electrical conduit through the approved fittings to the conduit box.
2. Remove the conduit box cover.
3. Connect the wires from the power supply to the wires in the conduit box.
4. Install the ground wire if required.
5. Sparingly lubricate the o-ring before screwing the cover into the manifold. Use light grease, oil, or petroleum jelly. Replace the conduit box cover. Do not use pipe sealant on the conduit box cover threads.

WIRING INSTRUCTIONS - 208-230 VOLT SINGLE PHASE PUMPS

The motor control box must be located away from the fueling area in a nonhazardous location (see Fig. 3).

1. Connect the single phase 208-230 V power supply from the distribution panel to terminals L1 and L2 in the motor control box. Each control box should be wired through a separate fused disconnect switch or circuit breaker (including neutral, when used), furnished by customer.

2. Using properly color coded wires, connect wires from the red, black, orange and two blue terminals on motor control box terminal strip to the corresponding color coded wires in the junction box of the proper submerged pump.

The “on-off” control station must be of explosion-proof construction. Where loading racks and dispensers are served by the same submerged pump, the 2-wire switches must be connected in parallel so the submerged pump can be controlled from any dispenser or any loading rack.

3. Connect wires from terminal Blue-1 and terminal 3 in motor control box to dispenser control switches (if dispensers are used) and “on-off” switch at loading rack as shown in Fig. 3.

4. The pumps are equipped with a no-liquid, over-temperature switch in the motor and an overload switch in the motor control box which will cut out if the motor is overloaded. If the pump fails to operate, or stops, when there is sufficient product in the storage tank, check the manual overload reset switch in the control box cover. Wait 10 minutes for the overload protector to cool off and then press the reset button.

CAUTION

If the reset button will not stay in position this indicates an overloaded motor, or a short to ground. This condition must be corrected. If the reset button stays in but the motor will not pump or continue to run, the tank is dry.

5. If an external pilot light is desired to indicate when the submerged pump is operating, wire as shown in Fig. 3, 4 or 5. Should this light continue to burn when all switches at dispensers and loading racks are off, this indicates that one of the dispenser switches is out of adjustment. On installations with no external pilot light, the submerged pump should be checked to make sure it is not operating when all switches are turned off.

6. The magnetic contactor coil is shipped ready to accept 208-230 volts. No changes are required unless a 110-120 volt coil is desired.

WIRING INSTRUCTIONS - 208-230, 400 OR 575 VOLT THREE PHASE PUMP

WARNING

On some installations, “phase converters” are used to obtain a three-phase power supply from a single-phase power source. The use of phase converters may cause an imbalance between the three phases and cause damage to the motor. For this reason, these requirements must be followed in order to maintain warranty coverage.

1. Static phase converters must not be used. Only rotary or electric phase converters are allowed.
2. The horsepower rating or the phase converter must be equal to at least three times the horsepower rating of the pump(s).
3. Current imbalance must not exceed 10% under varying flow conditions.
4. Proper three-leg quick trip overloads must be used.

1. Installations where the magnetic starter is located away from the loading rack in a nonhazardous location. (See Fig. 9.)

a. Connect the three phase power supply from the master panel to terminals L1, L2 and L3 in the magnetic starter.

b. Using properly color coded wires, connect a black wire from terminal T1 in the magnetic starter to the black motor lead, in the junction box of the proper submerged pump. Connect an orange wire from starter terminal T2 to the orange motor lead and red wire from terminal T3 to the red motor lead. (See Fig. 6 through 9.)

c. The 279-327-5 magnetic starter is shipped with the coil wired to accept 208-240 volts, 60 HZ. It may be rewired to accept 110-120 V.

To connect 110-120 volts to the coil, rewire the coil per the wiring diagram label on the side of the contactor. Next, connect a wire from terminal V of the coil to neutral.

The 279-230-5 magnetic starter is shipped with the coil wired to accept 575 V, 60 HZ. It cannot be rewired.

The 279-231-5 magnetic starter is shipped with the coil wired to accept 190/240 V 50/60 Hz. It may be rewired to accept 380/460V 50/60 Hz.

d. There are two remaining blue wires in the submerged pump junction box. Connect either blue wire to terminal L3 in the Magnetic Starter. Connect the other blue wire to one side of the “on-off” controls or switched “hot” from the electronic dispenser (See Fig. 8.) The “on-off” controls, if furnished by customer, must be of explosion proof construction.

e. Installations using mechanical dispensers must be connected for 2-wire control as shown on Fig. 6 and 7. Connect a black wire from the other side of the “on-off” switch to terminal 3 in the magnetic starter.

f. Installations using loading racks only, may be connected for two or three wire control. (See Fig. 7 or 9). For three wire control, connect a black wire from terminal 3 in the magnetic starter to the “on-off” switch. Connect a red wire from terminal 2 in the magnetic starter to the “on-off” switch.

NOTICE

3-wire control requires the use of an auxiliary contact in the magnetic starter. This auxiliary contact is not standard equipment in the starters supplied by Red Jacket, and must be ordered as an option. Use Furnas auxiliary field kit 49D2125001 or equivalent.

WARNING

Installations with the magnetic starter in a hazardous location require explosion proof starters. The wiring is the same as for general purpose enclosures.

g. Install proper overload heaters in magnetic starter.

2. Motor Rotation

Where it is not convenient to predetermine the power supply phase rotation, proper rotation can be determined by pump performance. Pump head pressure and capacity will be considerably less than rated when rotating backwards.

Connect the pump motor leads to terminal T1, T2 and T3 of the magnetic starter observing color code shown in Fig. 7, 8 or 9. With ample product in the tank and the system purged of air, start the motor and make a pressure gauge reading of the system pressure with the discharge valves closed; or, open one valve and calculate pumping rate.

Next, reverse power leads at L1 and L2. Repeat either pressure or capacity tests, as described above. If results are higher than the first test, the rotation of the second test is correct. If the second test gives lower performance than the first, reconnect the power leads to L1 and L2 (as under test 1) for correct rotation.

Where the power supply has been properly marked L1, L2 and L3 in accordance with accepted phase rotation standards, it is possible to predetermine the proper rotation of these units. The motor power leads are color coded black, orange and red, and if connected through the magnetic starter to L1, L2 and L3 respectively, the motor pump unit will rotate in the correct direction. It is recommended, however, that the performance tests always be made whether or not the power supply has been properly “phased out”.

P200R1, 208-230V, 2HP SINGLE PHASE

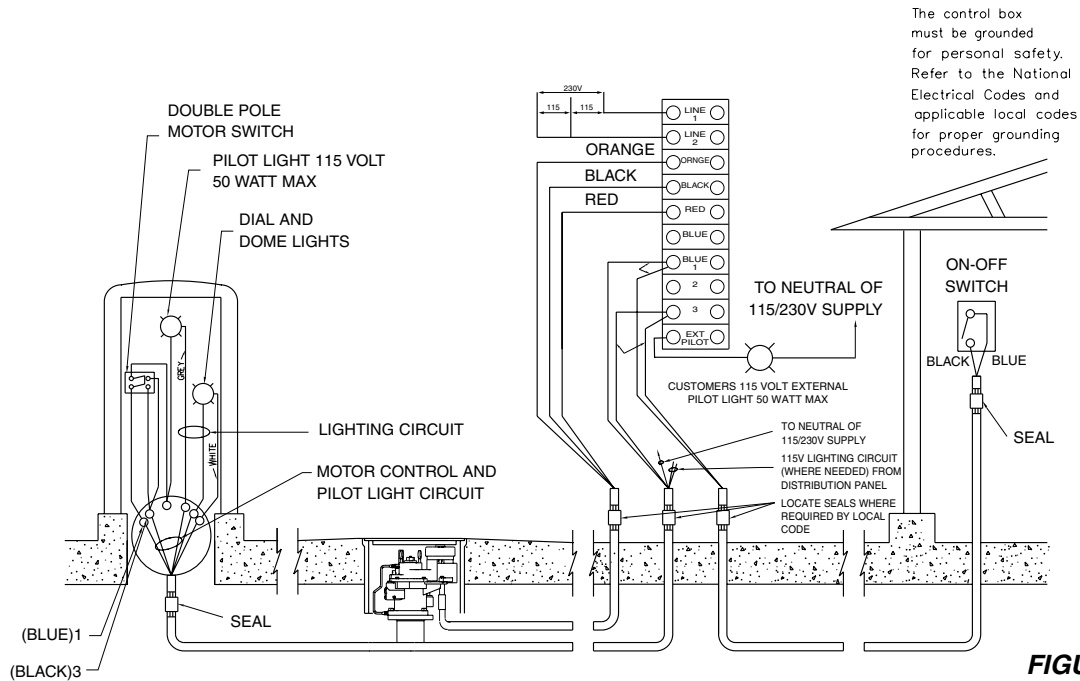


FIGURE 3

TYPICAL MECHANICAL DISPENSER REPRESENTATIVE WIRING DIAGRAM, 10, TWO-WIRE CONTROL

208-230 VOLT CONTROL BOX

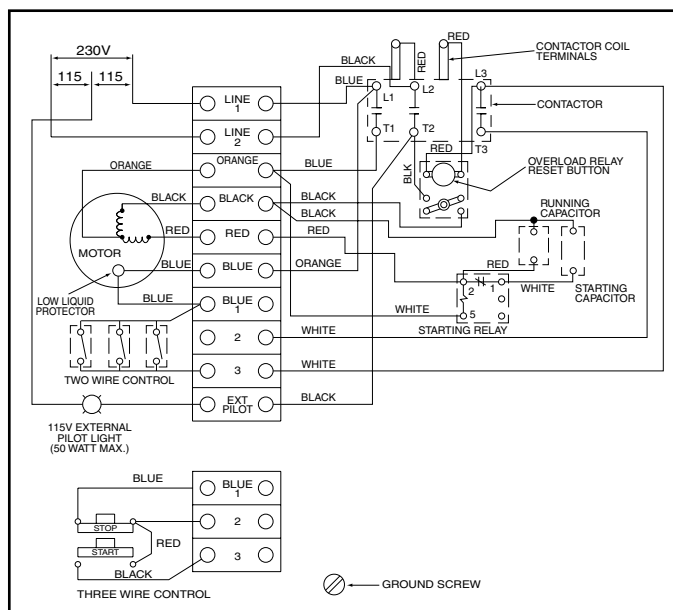


FIGURE 4

TYPICAL MECHANICAL DISPENSER MOTOR CONTROL BOX, WIRING DIAGRAM, 2 HP

NOTE: APPROVED COMPONENT ONLY - TOTAL SYSTEM INSTALLED SHALL COMPLY WITH ALL LOCAL CODES.

MAKE GROUND CONNECTION IN ACCORDANCE WITH LOCAL CODES

WARNING

The control box must be grounded for personal safety. Refer to the National Electrical Codes and applicable local codes for proper grounding procedures.

208-230, 2HP 1Ø CONTROL BOX

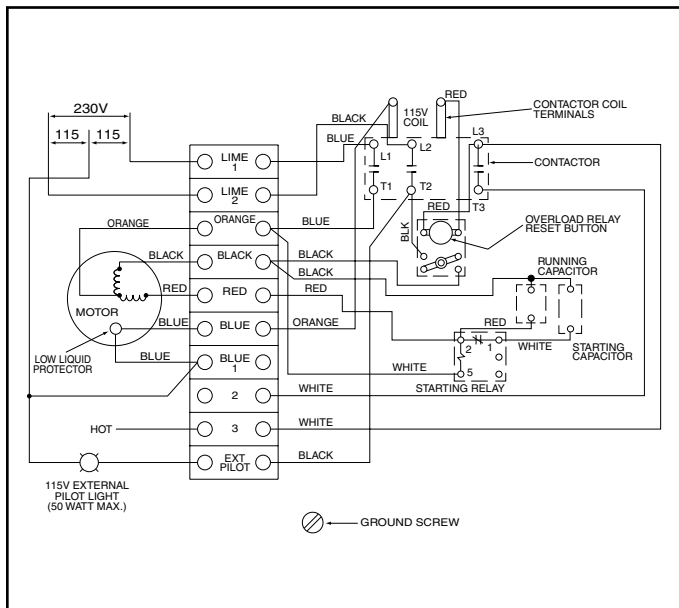


FIGURE 5

NOTE: APPROVED COMPONENT ONLY - TOTAL SYSTEM INSTALLED SHALL COMPLY WITH ALL LOCAL CODES.

MAKE GROUND CONNECTION IN ACCORDANCE WITH LOCAL CODES

WARNING

The control box must be grounded for personal safety. Refer to the National Electrical Codes and applicable local codes for proper grounding procedures.

- 1 Remove red wire (coil to L2).
2. Relocate orange wire at L1 to coil.
3. Change to 115V coil assembly..

REPRESENTATIVE WIRING DIAGRAM FOR USE WITH SWITCHED “HOT” FEED 208-230 VOLTS A.C., 2 HP SINGLE-PHASE CONTROL BOX.

3-PHASE POWER SUPPLY

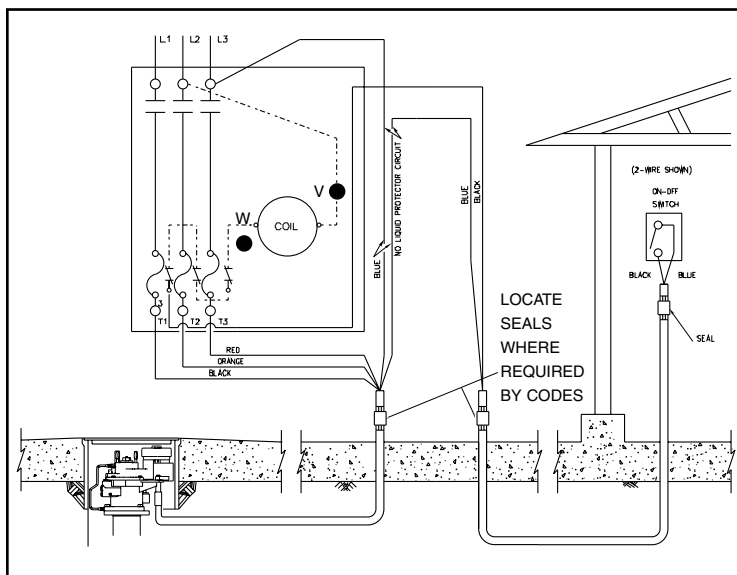


FIGURE 6

WARNING

The control box must be grounded for personal safety. Refer to the National Electrical Codes and applicable local codes for proper grounding procedures.

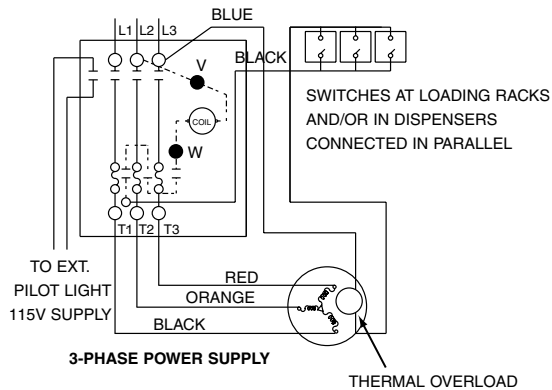
NOTICE

If 115V is not available from power supply, pilot lights may be operated from any 115V lighting circuit by controlling with a 4-pole starter. Otherwise, 230V pilot lights must be used.

REPRESENTATIVE WIRING DIAGRAM, THREE-PHASE, TWO-WIRE CONTROL

WARNING

The control box must be grounded for personal safety. Refer to the National Electrical Codes and applicable local codes for proper grounding procedures.

3-PHASE POWER SUPPLY

FIGURE 7

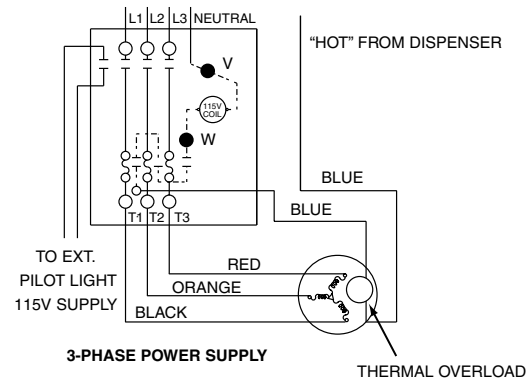
NOTE: OBSERVE COLOR CODE L1, L2, L3 PHASE SEQUENCE FOR PROPER ROTATION OF MOTOR.

TWO WIRE THREE-PHASE MOTOR WIRING DIAGRAM
WARNING

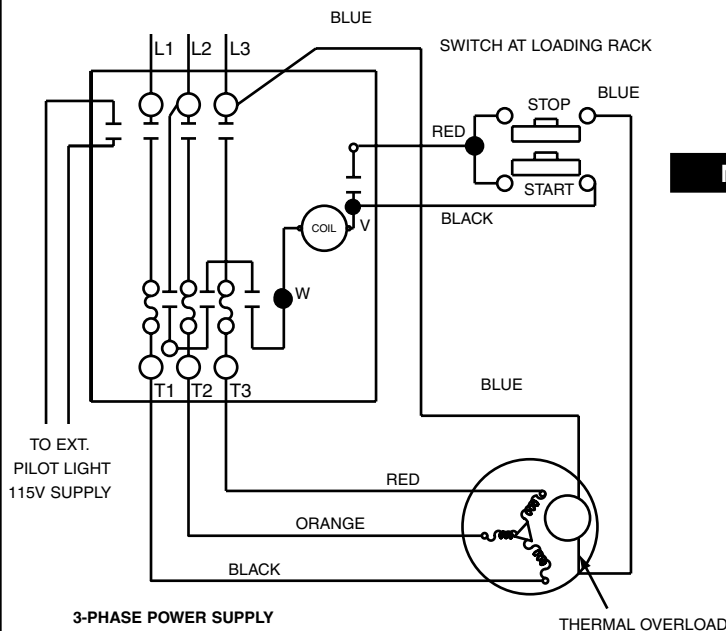
The control box must be grounded for personal safety. Refer to the National Electrical Codes and applicable local codes for proper grounding procedures.

NOTICE

Rewire coil for proper voltage.

3-PHASE POWER SUPPLY

FIGURE 8

NOTE: OBSERVE COLOR CODE L1, L2, L3 PHASE SEQUENCE FOR PROPER ROTATION OF MOTOR.

THREE-PHASE MOTOR WIRING DIAGRAM
3-PHASE POWER SUPPLY

FIGURE 9
THREE WIRE THREE-PHASE MOTOR WIRING DIAGRAM
WARNING

The control box must be grounded for personal safety. Refer to the National Electrical Codes and applicable local codes for proper grounding procedures.

NOTICE

3-wire control requires the use of an auxiliary contact in the magnetic contactor. Furnas auxiliary interlock field kit 49D22125001 or equivalent.

NOTE: OBSERVE COLOR CODE L1, L2, L3 PHASE SEQUENCE FOR PROPER ROTATION OF MOTOR.

STARTING THE SYSTEM AND COMPLETING THE INSTALLATION

1. Do not start pumps unless ample product is in the storage tank.
2. Pump sufficient product through each dispenser to purge the entire system of air. If all air is not purged, the computers may “creep” slightly when the dispenser switch is turned on, but no product has been dispensed.
3. On pumps equipped with built-in siphon, it is necessary to run the submerged pump at least 10 to 20 minutes continuously to purge the air from the siphon manifold.
4. After the above checks have been made, the backfill can be completed and the manholes installed as shown in Fig. 10.

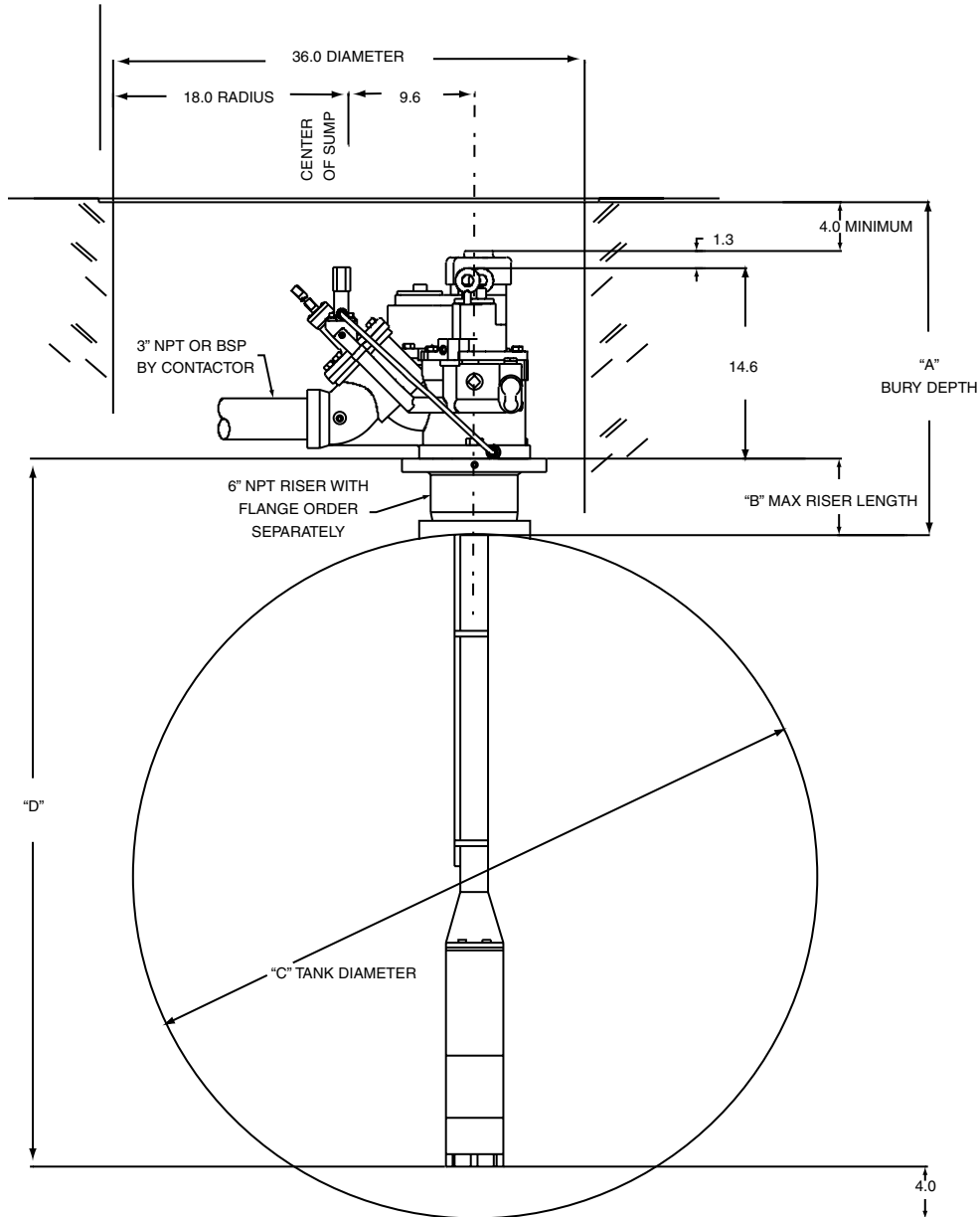


FIGURE 10

NOTICE

Distance between center line of pump motor and center line of fill pipe should be 3' minimum. Air locking of pump may occur at distances less than this distance.

Table B

BURY DEPTH "A"	RISER LENGTH "B" MAX	TANK DIA. "C"	72"	84"	96"	120"	144"
30 in.	10 in. (883-442-1)	PUMP LENGTH "D"	78"	90"	102"	126"	150"

BURY DEPTH "A"	RISER LENGTH "B" MAX	TANK DIA. "C"	72"	84"	96"	120"	144"
36 in.	16 in. (883-445-1)	PUMP LENGTH "D"	84"	96"	108"	132"	156"

BURY DEPTH "A"	RISER LENGTH "B" MAX	TANK DIA. "C"	72"	84"	96"	120"	144"
42 in.	21 in. (883-449-1)	PUMP LENGTH "D"	89"	101"	113"	137"	161"

BURY DEPTH "A"	RISER LENGTH "B" MAX	TANK DIA. "C"	72"	84"	96"	120"	144"
48 in.	27 in. (883-449-1)	PUMP LENGTH "D"	95"	107"	119"	143"	167"

BURY DEPTH "A"	RISER LENGTH "B" MAX	TANK DIA. "C"	72"	84"	96"	120"	144"
60 in.	36 in. (883-451-1)	PUMP LENGTH "D"	104"	116"	128"	152"	176"

BURY DEPTH "A"	RISER LENGTH "B" MAX	TANK DIA. "C"	72"	84"	96"	120"	144"
72 in.	51 in. (883-454-1)	PUMP LENGTH "D"	119"	131"	143"	167"	191"

Table C

Model Number Pump Motor Assembly	HP	Volt	Phase	Winding Resistances (OHMS)			
				Orange to Red	Orange to Blk	Red to Blk	Blue to Blue
UMP200J1-2MB	2	208-230	1	5.4-6.2	1.5-2.0	6.9-8.2	0.0-1.0
UMP200J4-2MB	2	208-230	3	2.3-3.2	2.3-3.2	2.3-3.2	0.0-1.0
UMP300J4-2HB	3	208-230	3	1.7-2.3	1.7-2.3	1.7-2.3	0.0-1.0
UMP300J17-3HB	3	380-415	3	7.5-9.1	7.5-9.1	7.5-9.1	0.0-1.0
UMP500J4-2K	5	208-230	3	1.0-1.1	1.0-1.1	1.0-1.1	0.0-1.0
UMP500J17-3K	5	380-415	3	3.6-4.4	3.6-4.4	3.6-4.4	0.0-1.0
UMP500J6-2K	5	575	3	5.8-7.0	5.8-7.0	5.8-7.0	0.0-1.0

NOTICE

The above readings do not include the added resistance of the power supply wires to the submersible pump. Therefore, in order for the readings to fall within the above limits, the resistance should be checked at the submersible pump junction box. If the resistance readings are taken at the control box or magnetic starter, they will be slightly higher

DANGER

Always make a complete power disconnect before taking resistance readings.

Table D

HP	Volts	Phase	Service Factor Cur.	Locked Rotor Cur.	Branch Ckt. Protection		Wire Size for Max Length of Run Shown					Nema Codes
					Fusetron	Ckt. Brkr.	(From Service Entrance to Pump In Feet)					
			(Amps)	(Amps)	(Amps)	(Amps)	No. 14	No. 12	No. 10	No. 8	No. 6	
2	208-230*	1	12.0	61.0	20	20	172	274	929	673	1048	H
2	208-230*	3	7.2	45.0	15	15	361	574	899	1410	2197	K
3	208-230*	3	10.5	62.0	15	20	255	406	635	997	1552	K
3	380-415	3	5.4	29.0	15	15	787	1250	1956	3070	--	K
5	208-230*	3	17.2	92.0	25	30	--	240	376	590	920	J
5	380-415	3	8.8	49.0	15	15	472	750	1173	1841	2867	G
5	575	3	7.0	37.0	15	15	929	1477	2311	3627	--	K

*Figures represent maximum length in feet for 220 or 230 volt system. Use 75% of length for 208 volt system.

FLOATING SUCTION INSTALLATION INFORMATION

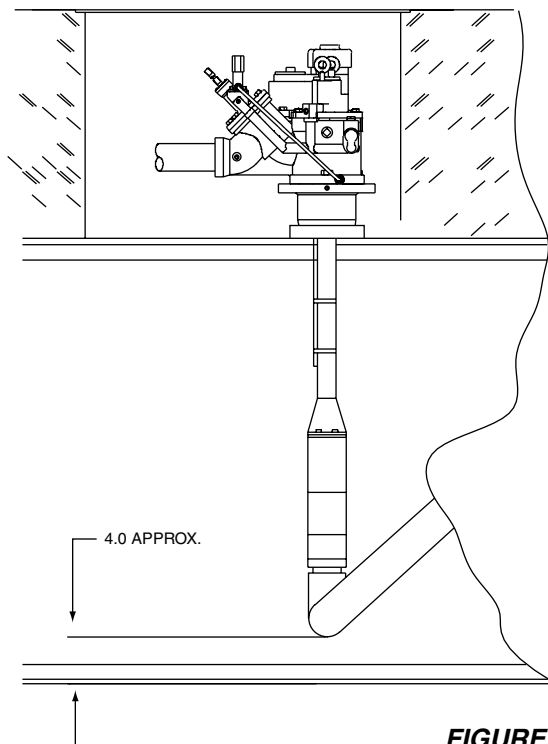


FIGURE 11

NOTICE

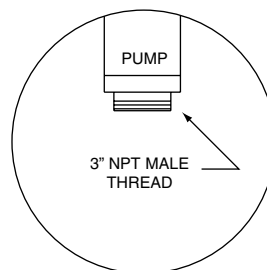
Red Jacket only supplies the adapter.

NOTICE

Red Jacket pumps are centrifugal type and as such are not designed to pump product when level is below the bottom of the pump.

NOTICE

Before installing pipe threads apply an adequate amount of fresh, UL classified for petroleum, non-setting thread sealant.



INSTALLING A BIG FLO DIAPHRAGM VALVE. REFERENCE FIGURE 12

WARNING

The installation described herein is for a single pump system. If two pumps are to be installed in tandem contact your service representative for instructions for your specific system.

1. Since the leak detector only checks for leaks down stream from itself it should be installed as close to the pump as possible while still maintaining clearance for the removal of the pump check valve housing.
2. Install the "Big-Flo" diaphragm valve per the instructions included with the "Big-Flo" Diaphragm Valve.
3. Install the vent line from the FXV to the 1/4 NPT port in the six inch flange using tubing and fittings supplied with the leak detector.
4. Test the installation per the instructions included with the "Big-Flo" diaphragm valve.

NOTE: IF BIG FLO VALVE IS INSTALLED IN SEPARATE SUMP, A PASSAGE WAY MUST RUN BETWEEN THE TWO SUMPS. THE FX VENT LINE CAN BE EASILY ROUTED BACK TO THE TANK THROUGH THIS PASSAGE WAY.

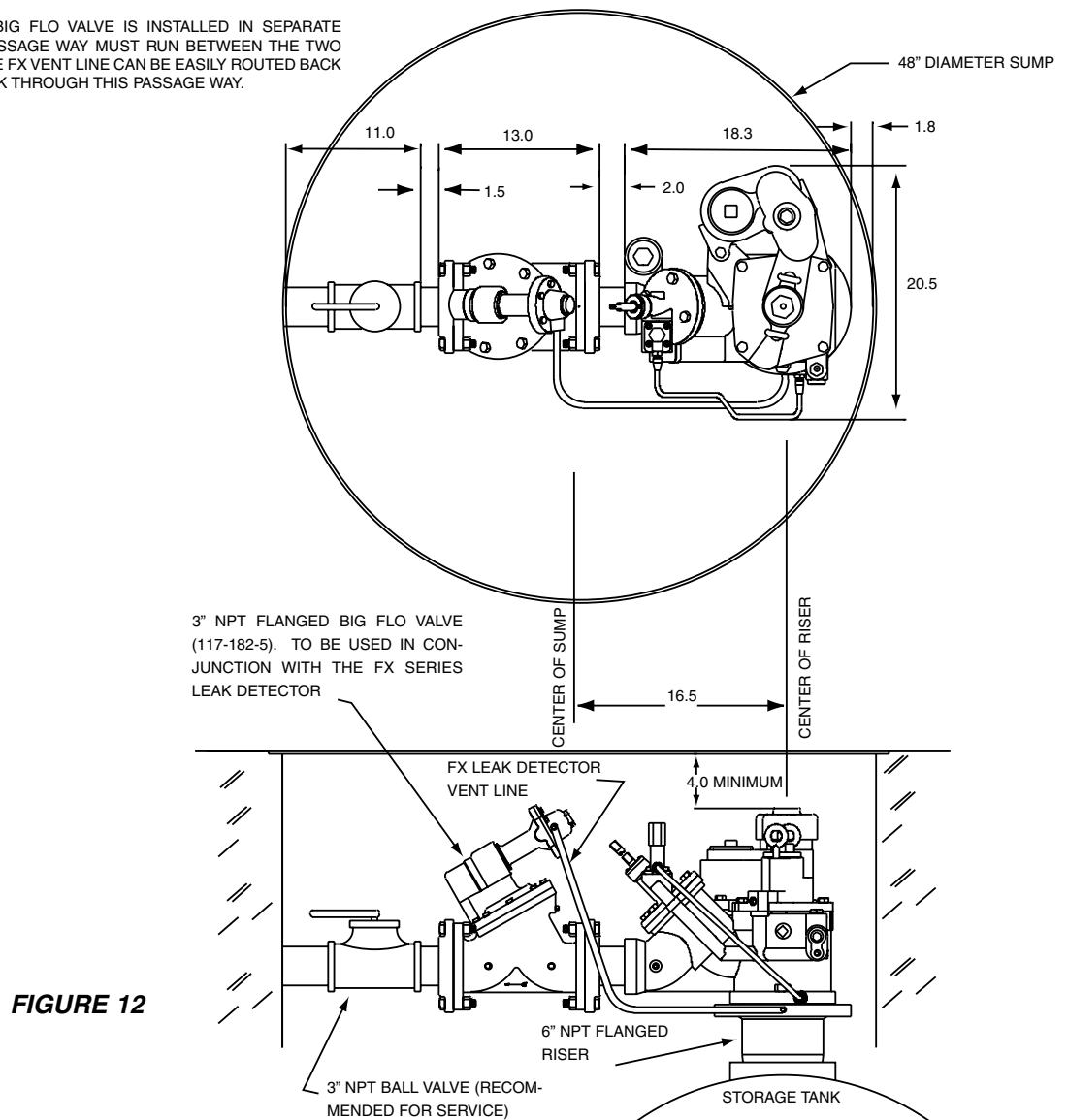


FIGURE 12

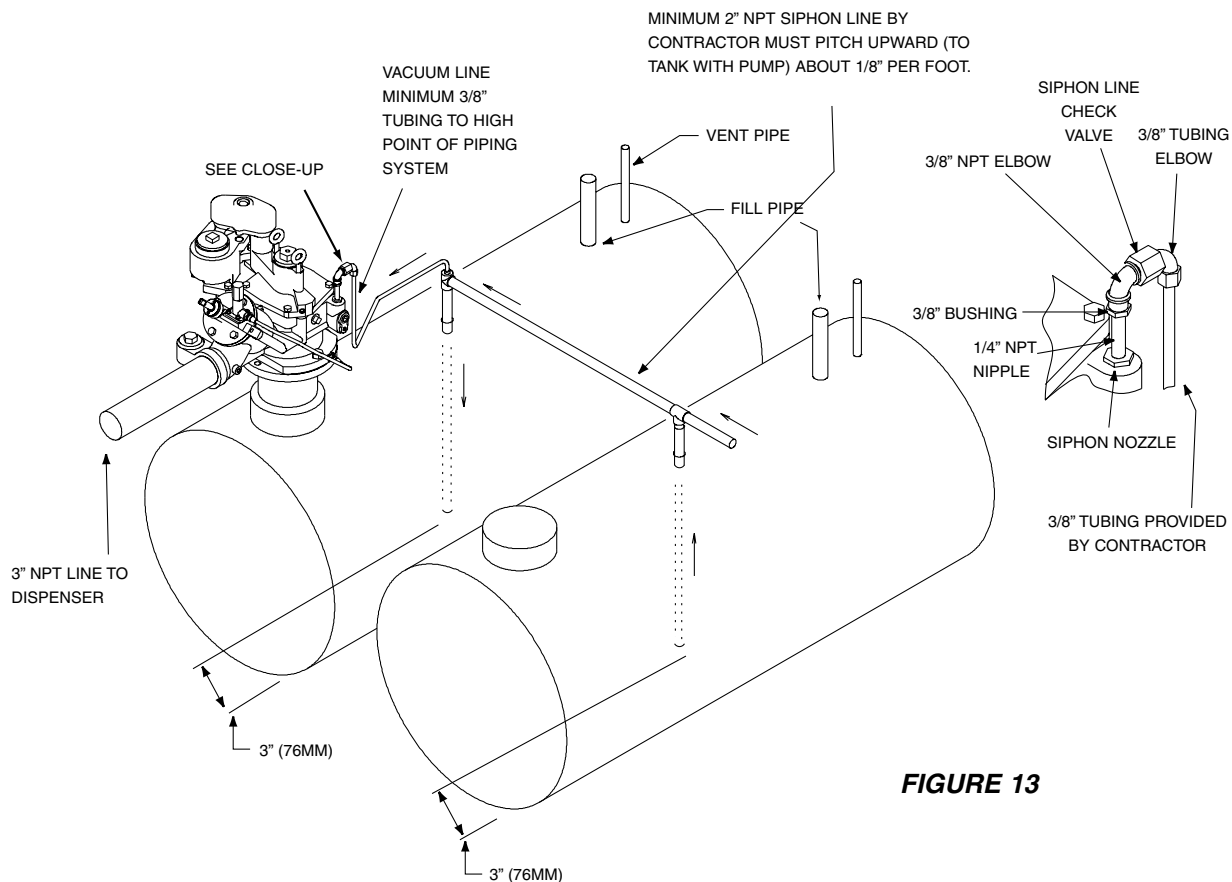


FIGURE 13

ATTACHING THE SIPHON LINE AND VACUUM LINE ON THE MAXXUM BIG FLO WITH FACTORY INSTALLED SIPHON ASSEMBLIES. REFERENCE FIGURE 13.

1. Remove the 1/4 inch pipe plug from the siphon nozzle.

NOTICE

Care should be taken to insure that the internal portions of the siphon nozzle and parts included in the siphon kit are clean and free of debris or contamination during assembly.

CAUTION

Before installing pipe threads apply an adequate amount of fresh, UL classified for petroleum, non-setting thread sealant.

2. Coat both of the male threads of the 1/4 X 2 inch long nipple with pipe sealant. Thread one end of the nipple into the siphon nozzle and the other end into the 1/4 x 3/8 reduction bushing.
3. Apply pipe sealant to the male threads of the reduction bushing and thread it into the 3/8 female elbow.
4. Apply pipe sealant to the male threads of the siphon check valve and thread it into the 3/8 female elbow.
5. Apply pipe sealant to the male pipe threads of the compression fitting elbow and thread it into the 3/8 hole in the siphon check valve.

INSTALLING TWO PUMPS FOR TANDEM OPERATION. REFERENCE FIGURE 14.

When greater flow rates are needed, two pumps may be required in the same piping system by means of a manifold. If they are installed according to the illustration, a tandem system offers backup support so operations can continue if one pump stops working. Install the pump as outlined above with the following additions.

1. If a siphon system is required each pump must have 3/8 inch siphon vacuum line attached to the same location on the two inch siphon line.

WARNING

2. Adjust the Pressurstat on both packers to maximum relief pressure by rotating fully clockwise. If maximum pump pressures are NOT a minimum of 5 PSI below the Pressurstat relief setting then proper check valves with pressure relief are required to be installed in the discharge line of each pump to prevent product from being pumped through the pressure relief system of the adjacent pump when it is not operating.

NOTICE

Installation of a ball valve is recommended on the discharge side of the pressure relief check valve. This will aid in troubleshooting and line testing.

NOTICE

The drawing shown here is to illustrate the requirement for in-line, pressure relief type check valves. It is not a recommended guide for installation of piping downstream of the check valves.

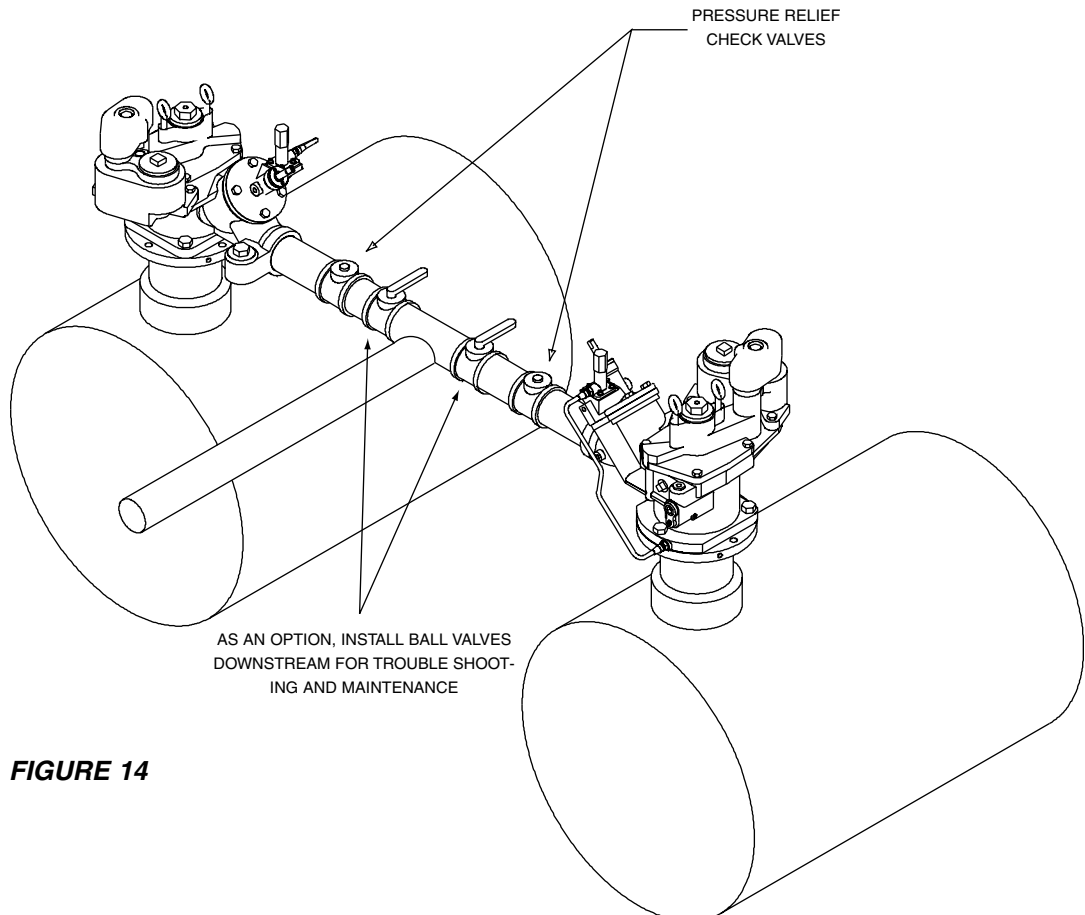


FIGURE 14

WARNING

The check valves shown installed in the discharge line of each pump are necessary to prevent product from being pumped through the pressure relief system of the adjacent pump, if that pump is not running. This is because the expansion relief valve operates at below pump pressures. If check valves without pressure relief were used, there would be no provision for thermal expansion between the valves and the dispensers.

It is preferable that the wiring allow both submersibles to operate simultaneously with any combination of dispensers turned on. To operate individually, the appropriate disconnect switch must be turned off manually. (See Fig. 15 through 18 for suggested wiring diagrams.)

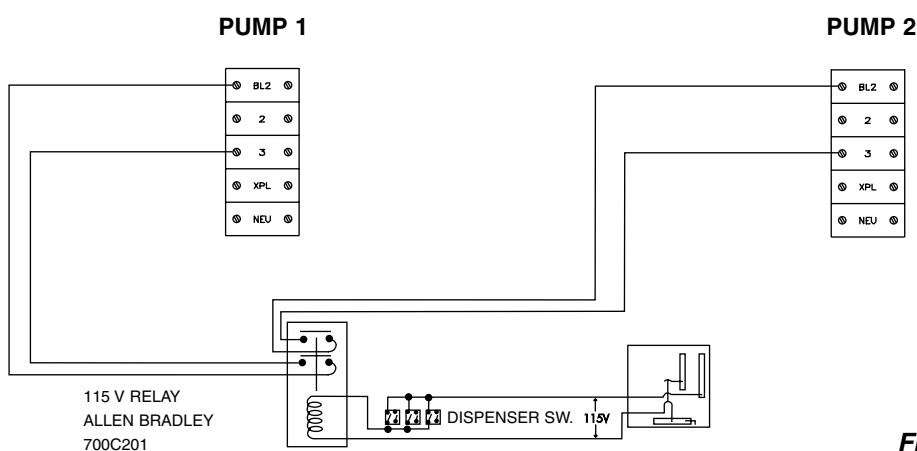


FIGURE 15

SUGGESTED DIAGRAM FOR WIRING DUAL MANIFOLD SYSTEM. TWO WIRE CONTROL. 208/230 SINGLE PHASE

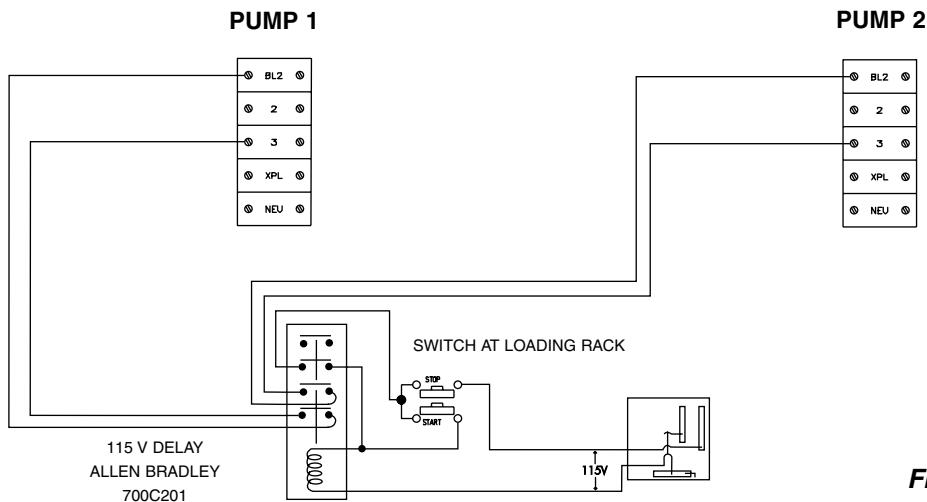
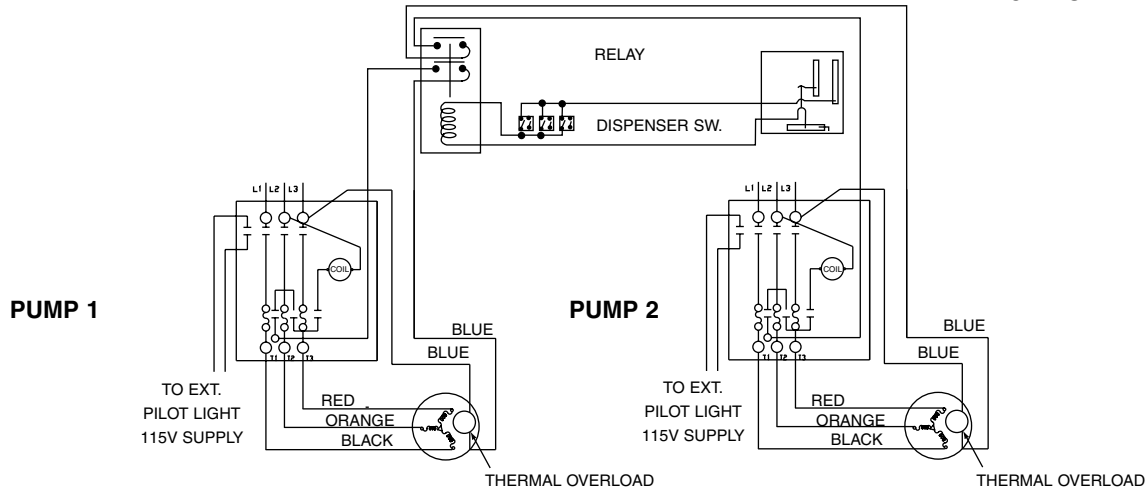


FIGURE 16

SUGGESTED DIAGRAM FOR WIRING DUAL MANIFOLD SYSTEM. THREE WIRE CONTROL. 208-230 SINGLE PHASE

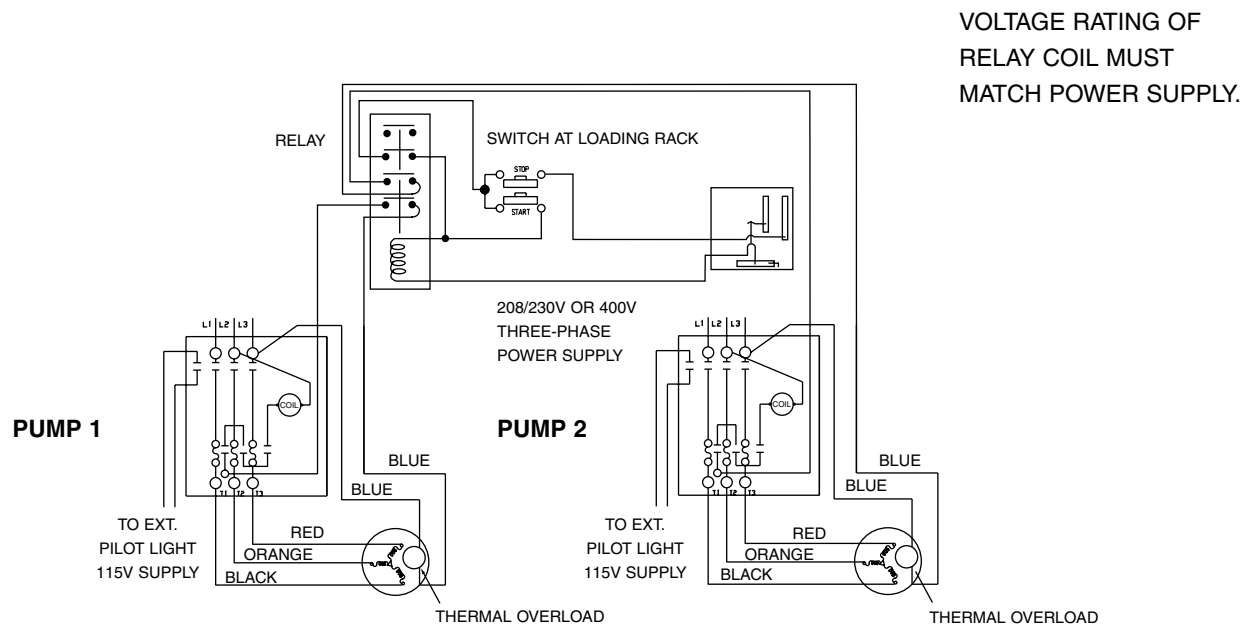
VOLTAGE RATING OF
RELAY COIL MUST
MATCH POWER SUPPLY.



NOTE: OBSERVE COLOR CODE L1, L2,
L3 PHASE SEQUENCE FOR PROPER
ROTATION OF MOTOR

FIGURE 17

**SUGGESTED DIAGRAM FOR WIRING DUAL MANIFOLD SYSTEM.
TWO WIRE CONTROL. THREE PHASE**



NOTE: OBSERVE COLOR CODE L1,
L2, L3 PHASE SEQUENCE FOR
PROPER ROTATION OF MOTOR

FIGURE 18

**SUGGESTED DIAGRAM FOR WIRING DUAL MANIFOLD SYSTEM.
THREE WIRE CONTROL. THREE PHASE**

CHAPTER 2: TESTING THE INSTALLATION

TESTING THE PIPING. REFERENCE FIGURE 19.

DANGER

Always disconnect and lock out or tag out the power before starting to service the pump.

1. Block the lines at each dispenser. (Trip the dispenser shear valve.)
2. Lock down the pump check valve by turning the check valve lock down screw clockwise as far as it will turn.

CAUTION

Excessive pressure (above normal test pressure of 50 - 55 PSI (345-380 kPa) may damage the pump check valve seat and other system components.

3. Apply the line test pressure at the line test port. [50PSI (345 kPa) maximum].
4. After the completion of the test release the pressure by:
 - a. Turning the check valve lock down screw counter clockwise as far as it will go.
 - b. Turn the Pressurstat adjustment screw counter clockwise until the screw protrudes 3/4", this will relieve the line pressure to "0" psi (see Figure 20).

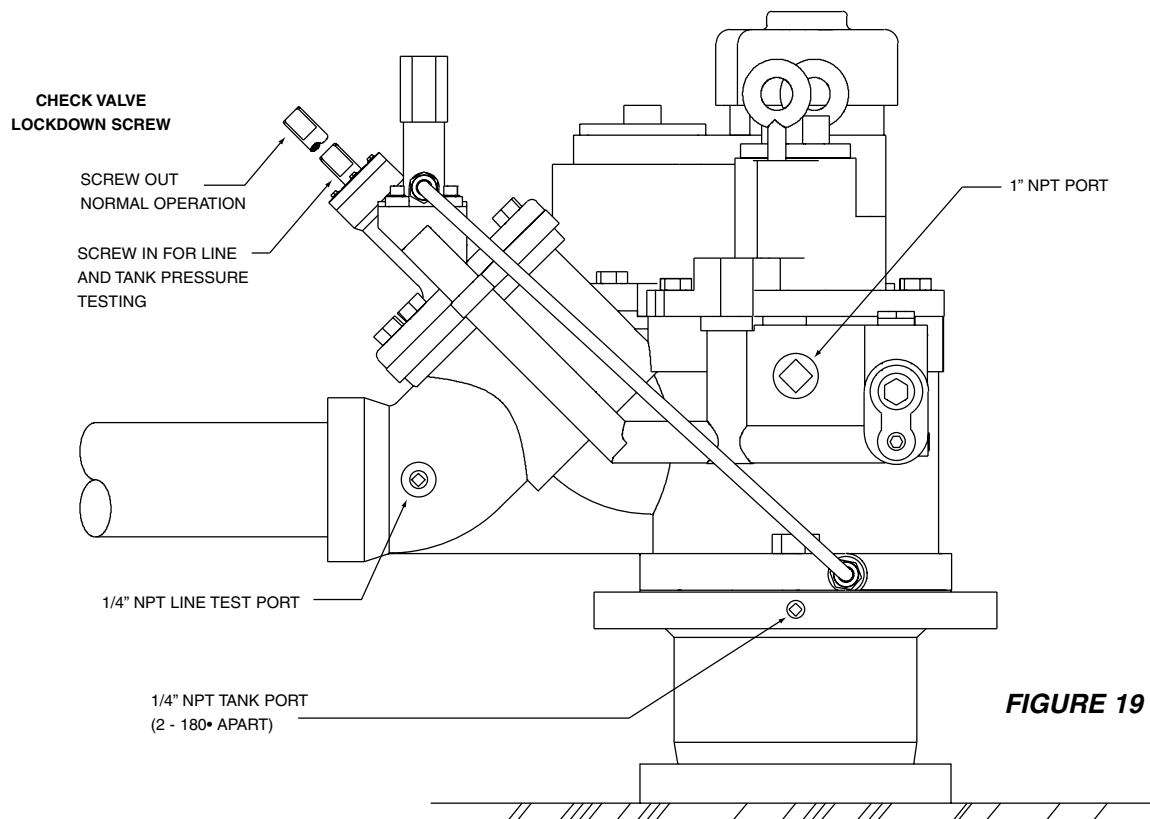


FIGURE 19

TESTING THE TANK. REFERENCE FIGURE 19.

1. Lock down the pump check valve by turning the check valve lock down screw clockwise as far as it will turn.
2. Remove the Tank Test Plug from the riser flange.
3. Apply tank test pressure at the tank test port.
4. After the completion of the test, release the pressure by turning the check valve lock down screw counter clockwise as far as it will go.

PURGING THE SYSTEM

1. Pump a minimum of fifteen gallons (57 liters) of product through each dispenser.
2. Start with the dispenser furthest from the pump and work toward the pump.

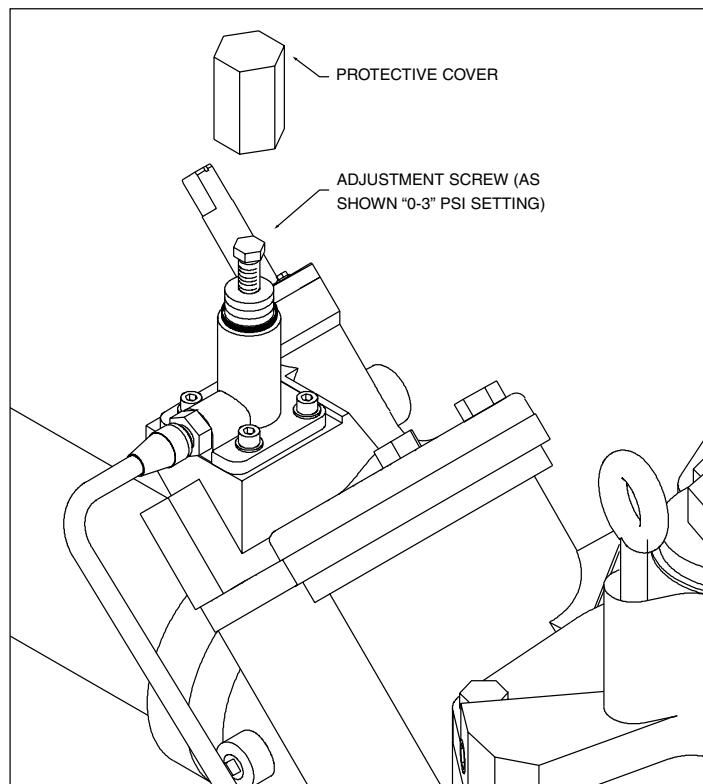


FIGURE 20

ADJUSTING THE PRESSURSTAT LINE RELIEF PRESSURE, (THE LINE PRESSURE AFTER THE PUMP STOPS). REFERENCE FIGURE 20.

1. All pumps are factory set to a line relief pressure of 23-28 PSI (160-195 kPa).
2. Remove the protective cover.
3. Adjust the relief pressure to the desired level. Turning the adjusting screw clockwise will increase the line relief pressure. With the adjusting screw fully down the line relief pressure should be from 40 to 45 PSI. With the adjusting screw all the way up the pressure should be from 0 to 3 PSI.

4. The line relief pressure can be verified in three locations.
 - a. The pressure can be observed from the control unit of the electronic line leak detector.
 - b. The pressure can be observed by attaching a gauge to the impact valve.
 - c. The pressure can be observed by attaching a gauge to the line test port.
5. After setting the desired line relief pressure replace the protective cap. **DO NOT USE PIPE SEALANT.** Tighten to just snug after the protective cover has fully bottomed out.

CHAPTER 3: SERVICE AND REPAIR

REMOVING THE EXTRACTA ASSEMBLY. REFERENCE FIGURE 21.

DANGER

Always disconnect and lock out or tag out the power before starting to service the pump.

1. Unscrew the 5/8 inch bolt and pull the yoke up and rotate it 90° counter clockwise
2. Unscrew and remove the four 1/2 inch Extracta retaining bolts.
3. Lift the Extracta straight up out of the manifold assembly using the lifting eyes. A vertical lift will ensure the O-ring in the manifold will not be damaged.

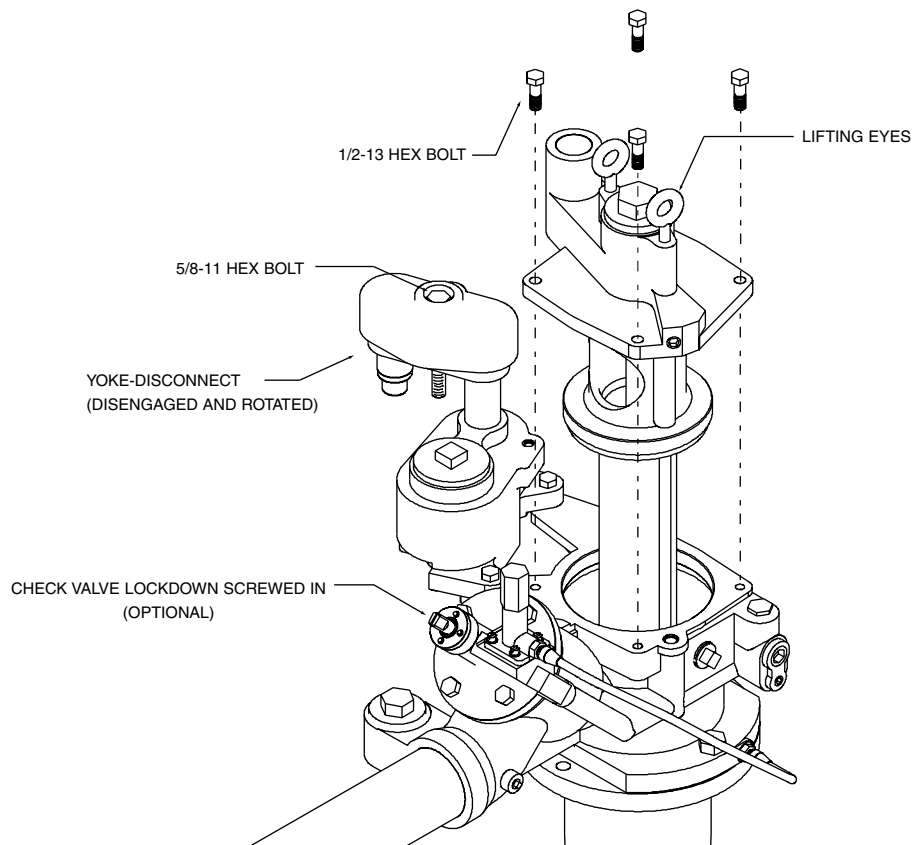


FIGURE 21

PROCEDURE FOR REMOVAL OF PLUG-IN TYPE PUMP-MOTOR ASSEMBLY

NOTICE

Not all installed pump/motor units will have a locknut securing the pump shell. Steps 3A and 12 can be skipped if no locknut is present.

- Step 1 Place pump in a horizontal position on a clean surface.
- Step 2 Block up under the 3-inch column pipe so that the pump/motor assembly is about 2 inches above supporting surface.
- Step 3A If a locknut is present; loosen setscrew in locknut. Unscrew the locknut from the discharge head. Slide the adapter tube up to expose the four hex head machine bolts.
- Step 3B Loosen and remove the four hex head machine bolts on the top of the pumping unit just above the shell and around the motor.
- Step 4 Do not let the pump roll. Using your hands, (do not use a wrench) hold pump at the extreme bottom end and use a slight up and down motion to pull the pump from the casting attached to the 3-inch pipe.

NOTICE

Up and down motion to remove the pump unit should not be greater than 1/4 inch. Motion greater than 1/4 inch could damage a positioning dowel pin in the top of the motor.

- Step 5 If the motor leads tend to stay plugged into the motor, finish removing the motor until the leads can be pulled out of the top of the motor by hand. (This is a “plug in” type connection). Verify the number of wires. If there are only three wires, the pigtail and conduit seal must be replaced with the proper 5-wire version.

Table E

HP	Pigtail	Buna Seal	Seal & Pigtail Kit
3	213-065-4	110-038-4	213-065-5
5	213-069-4	110-038-4	213-069-5

WARNING

Installed pump/motor units with 3-wire pigtails must be upgraded to the proper 5-wire pigtail and conduit seal assemblies.

- Step 6 Push the leads back into the casting on 3-inch pipe.

CAUTION

Match the projecting metal and rubber part of the plug in into the slot of the female receptacle.

- Step 7 Remove the block from the top of the new pump/motor.
- Step 8 Slip the new “O” ring (in the small envelope) into the groove on the casting that is still screwed to the 3-inch pipe. Oil the “O” ring with light lubricating oil (SAE-10).

- Step 9 Look at bottom of the casting which remains screwed to the 3-inch pipe. Note the position of the one hex head bolt. Place the four machine bolts through the four bolt holes.

NOTICE

One hole (180 degrees away from the hex head) remains open, this is the locating pin hole.

- Step 10 Find the locating pin on top of the motor. This pin must go into the remaining open hole referred to in notice following Step 9.
- Step 11 Place the new pump/motor assembly in position by starting the locating pin into the hole referred to above. Gently push the motor into place until the shell starts to pass over the large "O" ring. Position the four machine bolts into the bolt holes and start threads. Draw all bolts down evenly until all are snug. After all bolts are snug, torque bolts to 24-34 ft-lbs.

NOTICE

Draw all bolts down evenly until all are snug. This will help avoid damaging the connector and dowel pin.

- Step 12 If a locknut is present; slide the adapter tube down over the discharge head so that it sets against the shell. Thread the locknut onto the discharge head and tighten until the adapter tube is firmly held in place against the pump shell. Torque locknut to 55-75 ft-lbs. Torque setscrew in locknut to 25-50 in-lbs.

INSTALLING THE EXTRACTA ASSEMBLY. REFERENCE FIGURE 21.

DANGER

Always disconnect and lock out or tag out the power before starting to service the pump.

1. Inspect the lower o-ring in the manifold and the one in the lower face of the Extracta head. If they are nicked or otherwise damaged replace them.
2. Sparingly lubricate the lower o-ring located in the inside the manifold and the o-ring in the lower face of the Extracta head. Use light grease, oil, or petroleum jelly.
3. Lower the Extracta into position through the manifold assembly. Care should be taken to keep the unit as near to vertical as possible to avoid damaging the o-rings. Start the four 1/2 inch Extracta retaining bolts. DO NOT TIGHTEN THEM AT THIS TIME.
4. Rotate the yoke-disconnect into position so that the brass boss aligns with the disconnect port in the packer assembly.
5. Tighten the 5/8 inch bolt to fully engage the yoke.
6. Torque the four 1/2 inch Extracta retaining bolts to 50 ft lbs. (68 N•M)
7. Torque the 5/8 inch bolt to 50 ft lbs. (68 N•M)
8. Visually inspect the pumping unit for leaks while the pump is running. This is to insure that no seals or sealing surfaces were damaged during removal or installation of the Extracta assembly.

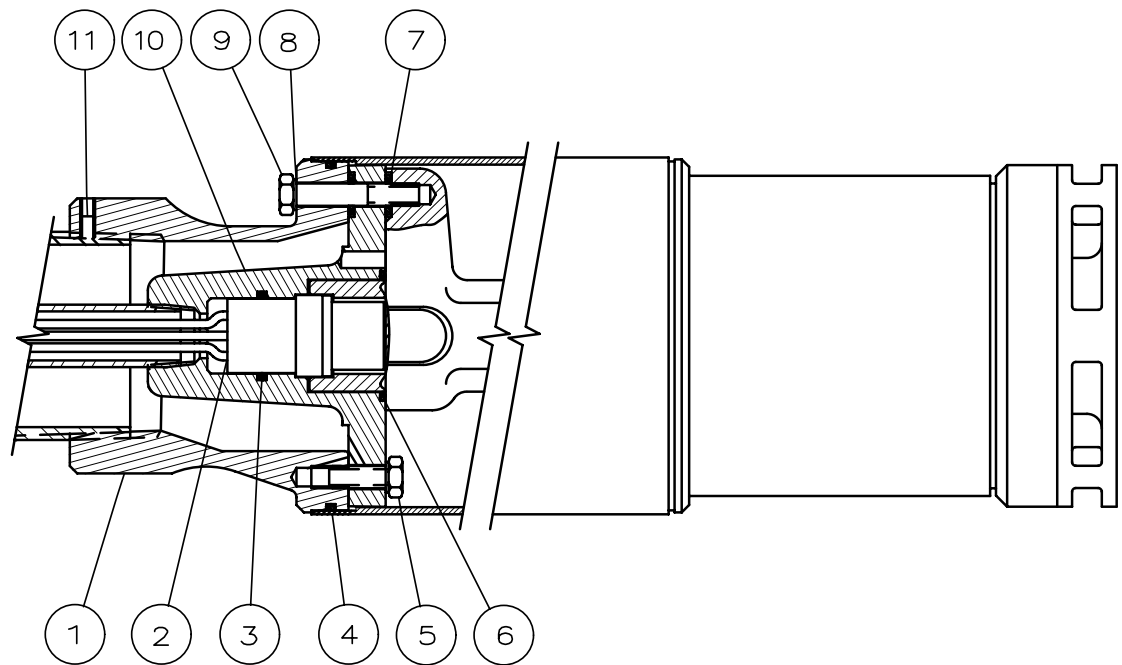


FIGURE 22

Table F

Item	Part No.	Description	Number Required		
			2 HP	3 HP	5 HP
1	036-043-3	Head - Motor Discharge	1	1	1
2	213-065-5	Pigtail & Conduit Seal - 2, 3 HP	1	1	--
2	213-069-5	Pigtail & Conduit Seal - 5 HP	--	--	1
3	072-712-1	Pigtail O-ring	1	1	1
4	072-714-1	Motor Shell O-ring	1	1	1
5	026-179-1	Bolt - 3/8 -16 x 1 Hex	1	1	1
6	072-309-1	Receptacle Housing O-ring	1	1	1
7	031-328-1	Gasket Bolt	8	8	8
8	026-110-1	Lockwasher 3/8" Spring	4	4	4
9	026-184-3	Bolt - 3/8 -16 x 2-1/4 Hex-Gr. 5	4	4	4
10	038-241-3	Housing Pigtail	1	1	1
11	026-448-1	Set Screw Fastener - 1/4"	2	2	2
NS	001-157-3	Floating Suction Adaptor - HB	--	1	--
NS	001-026-3	Floating Suction Adaptor - K	--	--	1
NS	001-158-3	Floating Suction Adaptor - MB	1	--	--

Only the parts listed above are available for repairs of the lower end of the pump. If any other parts need replacing, order Red Jacket pump-motor assemblies. See page 33 for ordering numbers.

REPLACING THE CHECK VALVE ASSEMBLY.

DANGER

Always disconnect and lock out or tag out the power before starting to service the pump.

NOTICE

Close the ball valve in the discharge line if it has been installed.

NOTICE

Care should be taken to insure that the internal portions of the vent line and check valve assembly are clean and free of debris or contamination during servicing.

1. Relieve system pressure by removing the protective cover and then backing out the pressure adjustment screw.
2. Disassembly
 - a. Loosen or disconnect the lower vent line fitting.
 - b. Disconnect the upper vent line fitting.
 - c. Remove the four 1/2 inch hex bolts.
 - d. Pull the check valve housing assembly straight out of the manifold.

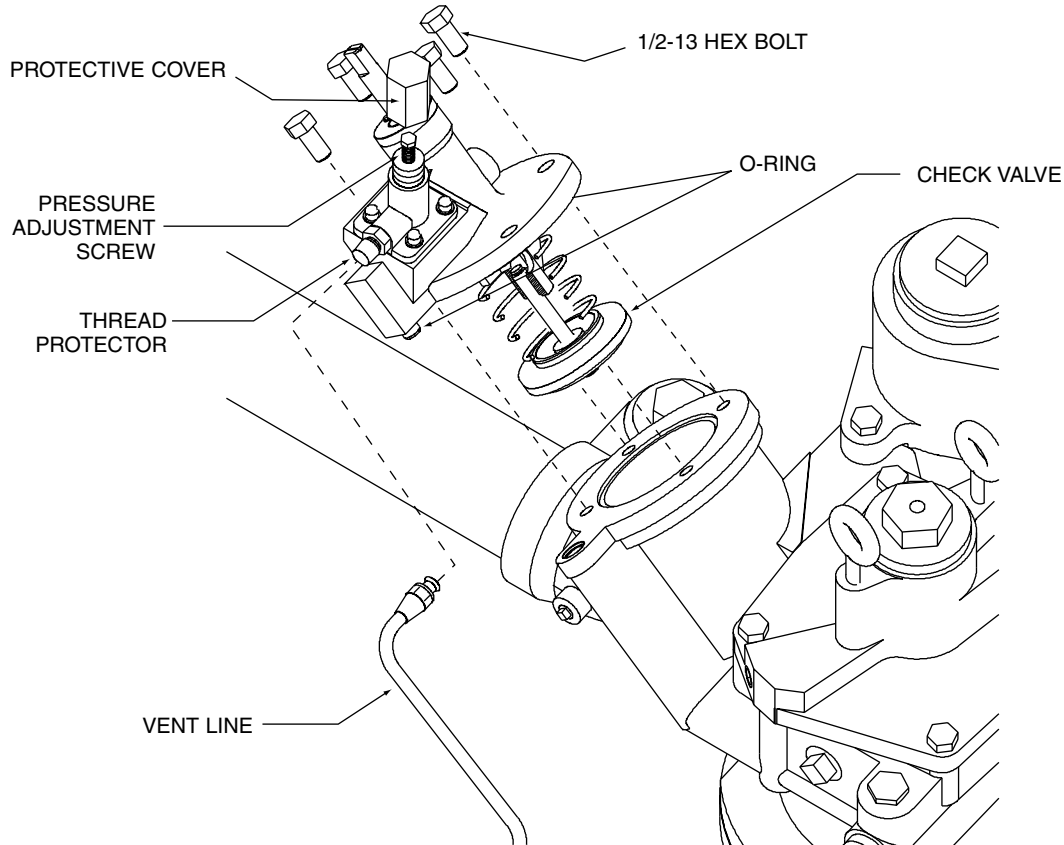


FIGURE 23

3. Assembly

- a. Be certain the two o-rings on the sealing face of the check valve housing are in place.
- b. Lower the check valve assembly back down into the manifold taking care not to damage the rubber seal on the check valve assembly.
- c. Install the four 1/2 inch bolts. Torque these bolts to 50 ft lbs. (68 N•M)
- d. Remove and discard the thread protector.
- e. Re-attach the upper vent fitting then tighten both the upper and lower fittings 1/6 to 1/4 turn beyond hand tight.

4. Readjust the pressure adjustment screw to the desired pressure setting.

5. Replace the protective cap.

***REPAIRING THE CHECK VALVE LOCK-DOWN SCREW AND SEALS.
REFERENCE FIGURE 24.***

DANGER

Always disconnect and lock out or tag out the power before starting to service the pump.

NOTICE

Care should be taken to insure that the internal portions of check valve housing are clean and free of debris or contamination during servicing.

1. Close the ball valve in the discharge line if it has been installed.

2. Lock down screw removal.

- a. Remove the four wiper housing retaining screws.
- b. Lift off the wiper housing from the lock-down screw.
- c. Remove the wiper from the wiper housing. Avoid damaging the bores in the housing.
- d. Unscrew the lock-down screw and remove it from the check valve housing.

3. Lock-down screw re-installation.

- a. Replace the two o-rings on the lock-down screw. These o-rings should be installed from the non-threaded end of the lock-down screw so as to avoid nicking or damaging the o-ring.

- b. Sparingly lubricate the two o-rings before screwing the lock-down screw into the check valve housing. Use light grease, oil, or petroleum jelly.
 - c. Using a flat piece of metal at least 1/2 inch larger than the OD of the wiper carefully drive the new wiper into the wiper housing orienting the wiper as shown in Figure 35.
 - d. Sparingly lubricate the wiper ID lip before sliding it over the lock-down screw onto the check valve housing. Use light grease, oil, or petroleum jelly.
 - e. Re-install the four #6 wiper housing retaining screws and torque to 20 in-lb.
4. Open the ball valve in the discharge line if it has been installed.

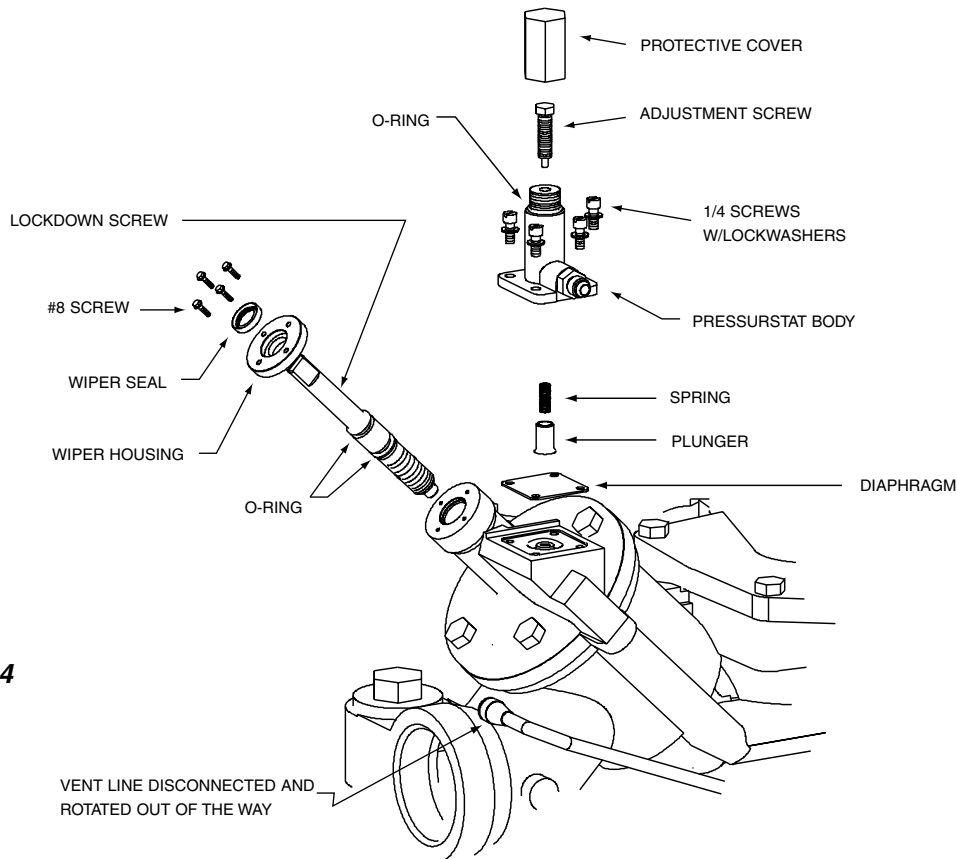


FIGURE 24

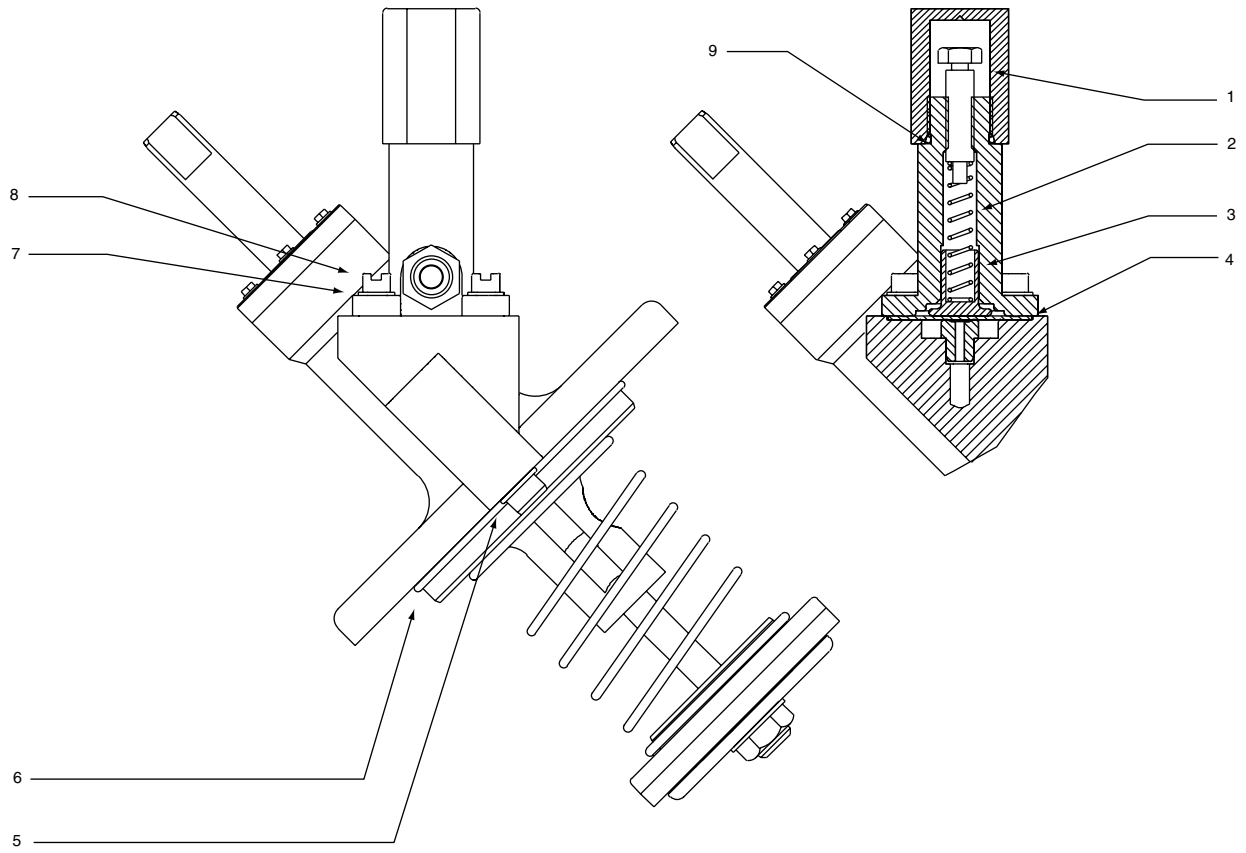


FIGURE 25

ITEM	PART #	DESCRIPTION	QUANTITY
1	076-447-1	SCREW - ADJUSTMENT	1
2	080-944-1	SPRING-EXPANSION RELIEF	1
3	067-278-1	PLUNGER	1
4	017-573-1	DIAPHRAGM - EXPANSION RELIEF	1
5	072-642-1	O-RING (-112)	1
6	072-699-1	O-RING (-240)	1
7	026-752-1	LOCKWASHER	4
8	026-748-1	SCREW - HEX SOCKET	4
9	072-684-1	O-RING (-910)	1

6" MAXXUM BIG FLO - REPAIR PARTS PACKER MANIFOLD ASSEMBLY PARTS -SIDE VIEW

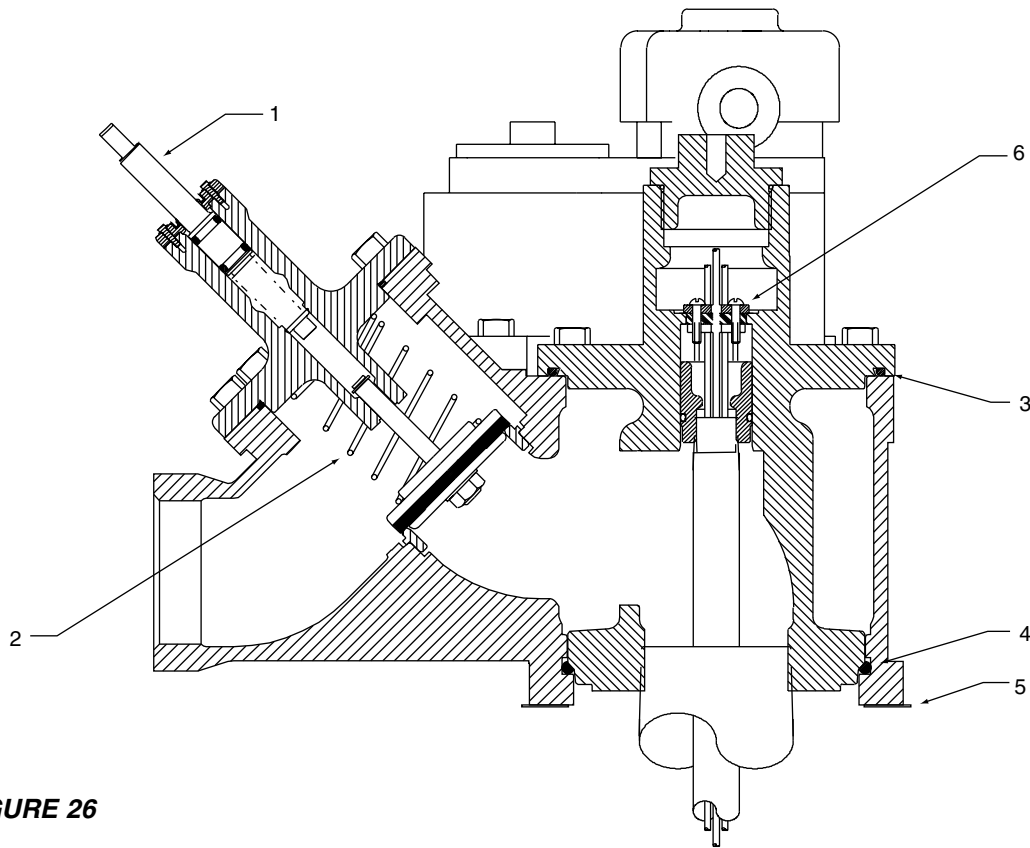


FIGURE 26

ITEM	PART #	DESCRIPTION	QUANTITY
1	144-320-5	Kit - Lock Down Screw	1
2	112-267-5	Kit - Check Valve	1
3	072-695-1	O-ring (-366)	1
4	072-696-1	O-ring (-439)	1
5	031-334-1	Gasket Flange	1
6	144-321-5	Kit - 5 Wire Bushing	1

6" MAXXUM BIG FLO - REPAIR PARTS PACKER MANIFOLD ASSEMBLY PARTS -TOP VIEW

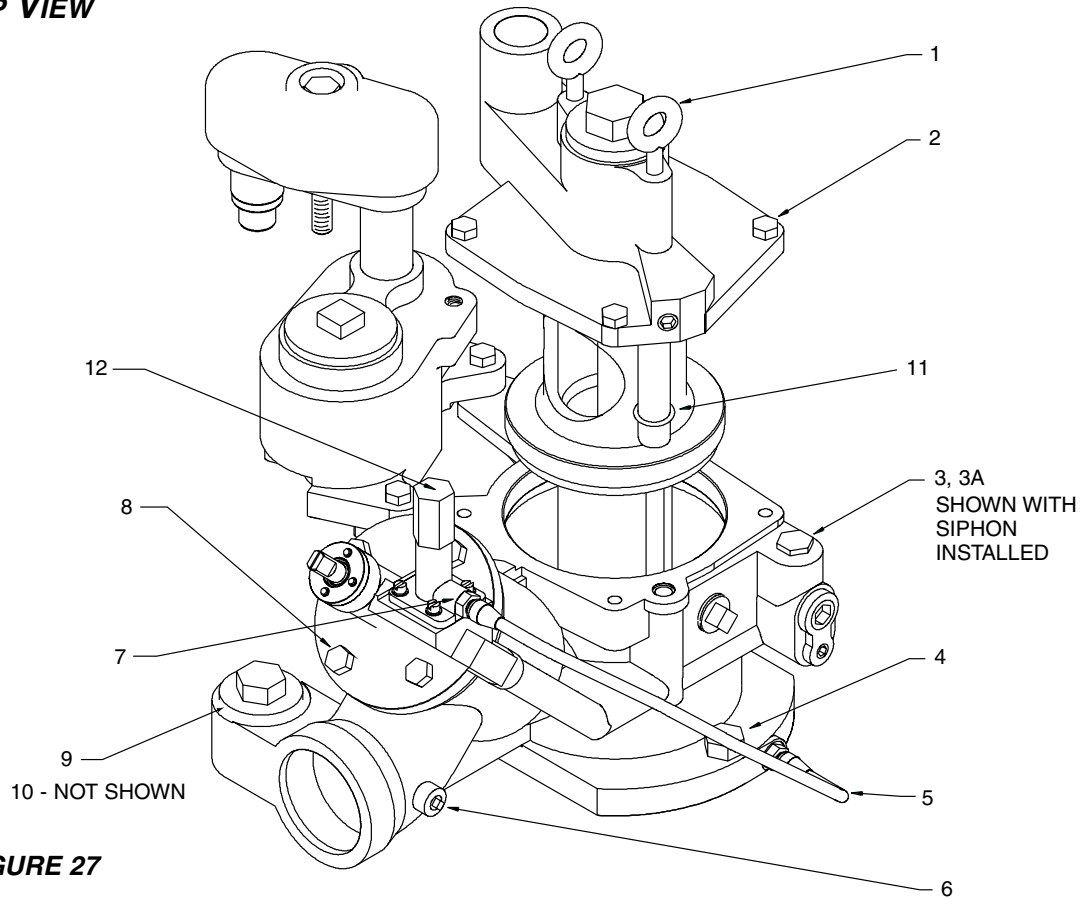


FIGURE 27

ITEM	PART #	DESCRIPTION	QUANTITY
1	036-470-1	Handle - Lifting	2
2	026-750-1	Bolt - Hex 1/2 - 13 x 1-1/2	6
3	144-307-5	Kit - Siphon Components	1
3a	066-163-3	Plug - Siphon Plug	1
4	026-759-1	Bolt - Hex 3/4 - 10 x 1-3/4	3
5	086-010-1	Line - Steel Vent	1
6	027-240-1	Plug - Square 1/4 NPT	1
7	027-276-1	Fitting - Tube	2
8	026-757-1	Bolt - Hex 1/2 - 13 x 1	4
9	067-265-1	Plug - 2" NPT with O-ring	1
10	072-686-1	O-ring (-228)	1
11	072-642-1	O-ring (-112)	1
12	144-322-5	Kit - Expansion Relief	1

6" MAXXUM BIG FLO - REPAIR PARTS YOKE ASSEMBLY

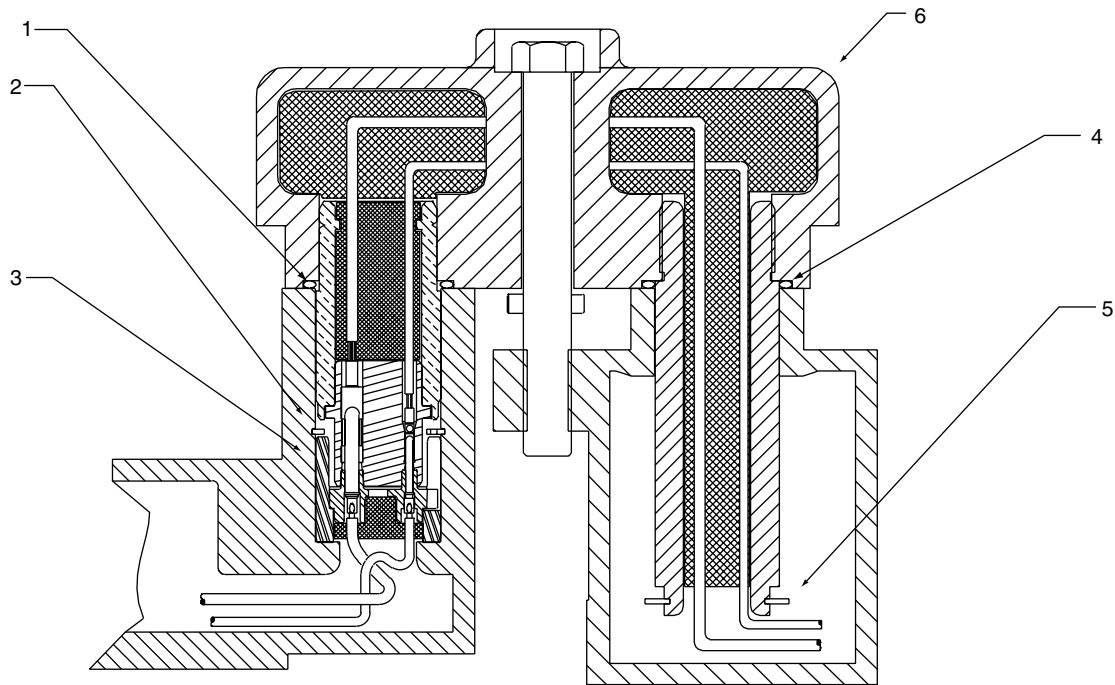


FIGURE 28

ITEM	PART #	DESCRIPTION	QUANTITY
1	072-700-1	O-ring (-223)	1
2	072-689-1	Internal Retaining Ring	1
3	114-319-5	Kit - 5 Wire Connector Assembly	1
4	072-710-1	O-ring (-130)	1
5	072-697-1	External Retaining Ring	1
6	110-064-5	Conduit Box Assembly - 5 Wire	1

CHAPTER 4: UL LISTED CONTROL BOXES

MOTOR CONTROL BOX FOR 2HP PUMPS MODEL P200H1-CB

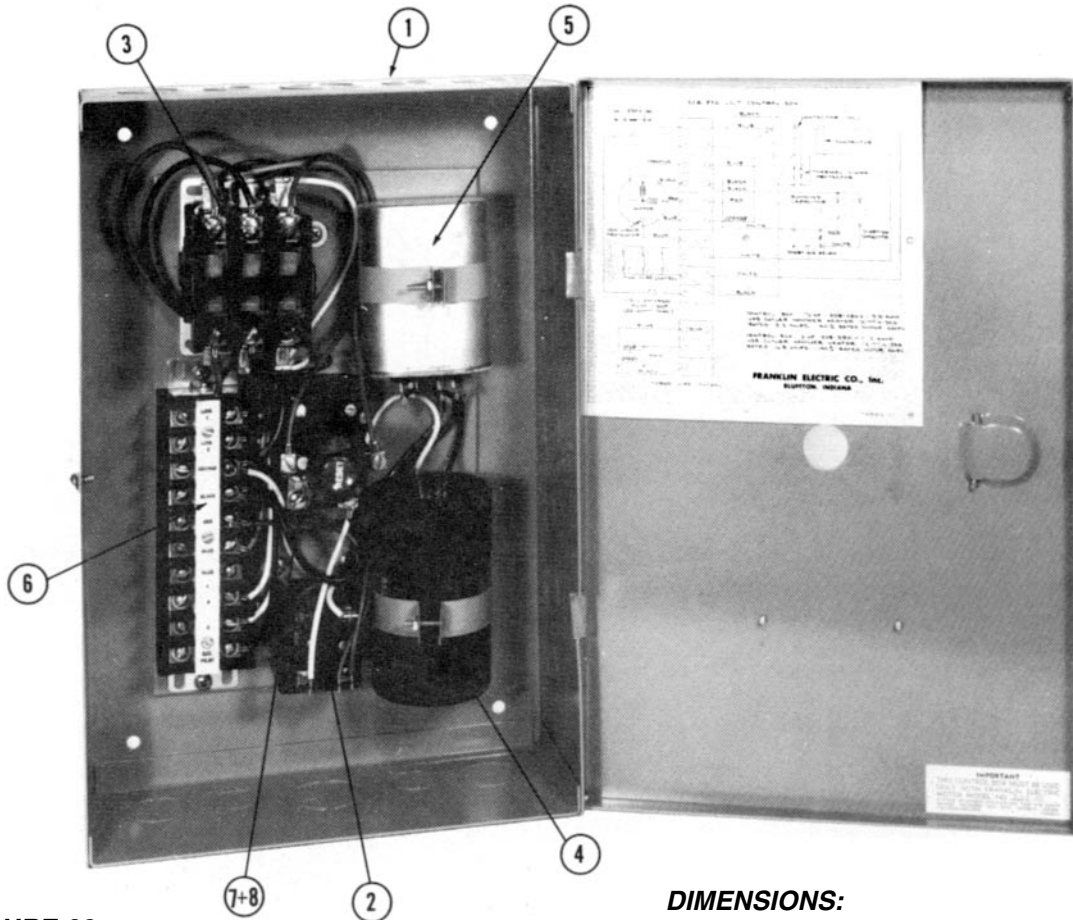


FIGURE 29

DIMENSIONS:
4" Depth X 10.125" Width X 15.125" Length

ITEM	PART #	DESCRIPTION	QUANTITY
1	108-403-1	P200H1-CB Complete General Purpose Motor Control Box	1
2	071-047-1	Starting relay (3ARR3-J3V2)	1
3	071-061-1	Line Contactor Relay	1
4	011-085-1	Starting Capacitor (200MFD-250 Volt)	1
5	012-253-1	Running Capacitor (15MFD-370 Volt)	1
6	008-180-1	Terminal Block	1
7	071-062-1	Overload Protector (Cutler Hammer 10-2149)	1
8	023-009-1	Overload Protector Heater Element (Cutler Hammer 10177H-33A) (P200H1-CB)	1

RED JACKET REPLACEMENT PUMP MOTORS

Ordering Number	Model Number	HP	Length in. (mm)	Weight lbs. (kg)	Volts	Phase
-----------------	--------------	----	-----------------	------------------	-------	-------

UMP

882-839-5	UMP-P200J1-2MB	2	32.1 (815 mm)	116 (53)	208-230	1
882-840-5	UMP-P200J4-2MB	2	29.6 (752 mm)	116 (53)	208-230	3
882-842-5	UMP-P300J42HB	3	34.3 (871 mm)	120 (54)	208-230	3
882-211-5	UMP-P500J4-2K	5	42.5 (1080 mm)	162 (74)	208-230	3
883-434-5	UMP-P300J17-3HB	3	37.4 (950 mm)	125 (57)	380-415	3
886-511-5	UMP-P500J17-3K	5	47.0 (1200 mm)	167 (76)	380-415	3
883-226-5	UMP-P500J6-2K	5	41.1 (1050 mm)	162 (74)	575	3

UMP WITH DISCHARGE HEAD

883-460-5	UMP-P300J17-3HB W/DH	3	40.1 (1020 mm)	135 (61)	380-415	3
886-454-5	UMP-P500J17-3K W/DH	5	49.7 (1270 mm)	182 (83)	380-415	3

MAGNETIC CONTACTOR FOR 2, 3, & 5 HP 3 PHASE PUMPS

WARNING

Three phase pump/motor units must have proper overload and quick trip heaters installed in the control box.

HP	Voltage	HZ	Control Box	Heaters (3 Req.)	Overload
2	208/230	60	279-231-5 or 279-327-5	036-072-1	061-018-1
3	208/230	60		036-076-1	061-018-1
5	208/230	60		036-080-1	061-018-1
5	575	60	279-230-5	036-100-1	061-018-1
3	380/415	50	279-231-5	036-070-1	061-018-1
5	380/415	50	279-231-5	036-074-1	061-018-1